



SSF/SSH4956-A

49.5" Resizing LCD, 1200nits LED backlight, 1920x538 ultra wide aspect ratio 16:4.5

SSF/SSH4956-A is an innovative ultra-wide, sunlight readable, LED backlight LCD display. It provides LCD panel with specific ratios for digital signage, public transportation, exhibition hall, department store, vending machine and industrial applications. Incorporating with A.D. control board and backlight design, it is high brightness and sunlight readable panel, can display high-quality video with energy-efficient.

Key Features

- Resizing LCD
- Ultra Wide Screen (16 : 4.5)
- Sunlight Readable
- LED Backlight
- High Brightness 1200 nits
- Low Power Consumption
- Wide Dimming
- Life Expectancy (70,000hrs)
- Slim Bezel



Applications

Digital Signage
Information

Specifications

V1

Model No.	SSF/SSH4956-A
Description	49.5" Wide TFT LCD, LED Backlight 1200 nits, 1920x538
Active Display Area (mm)	1209.6 x 338.9mm
Brightness	1200cd/m ²
Resolution	1920 x 538
Aspect Ratio	16 : 4.5
Contrast Ratio	9700:1
Pixel Pitch (mm)	0.21(H) x 0.63(V) mm
Viewing Angle	R/L 178(Typ.), U/D 178(Typ.)
Display Colors	16.7M colors
Response Time (Typical)	6.5 ms
Sync	LVDS
Power Consumption	93W / 104W
Outline Dimensions (mm)	1244.6x378.7x27.6
Weight (Net)	11.4kg
LED Driving Board	LID49A
Control Board (Optional)	<input type="checkbox"/> AD2662GDHMVAR
<input type="checkbox"/> AD2662GDHMVAR	VGA, DVI, HDMI (option AV/ S-Video/ Component/ Audio)
F / R Control Button	<input type="checkbox"/> 4 Key
<input type="checkbox"/> 4 Key	Power Switch, Menu, Select (+, -),
OSD Menu	Brightness, Contrast, H/V Position, Color, Phase, Clock...
Optional	<input type="checkbox"/> AOT <input type="checkbox"/> Touch Screen

Specifications are subject to change without notice.

All brands or product names are trademarks or registered trademarks of their respective companies.

SSF= Panel + LED Driving Board

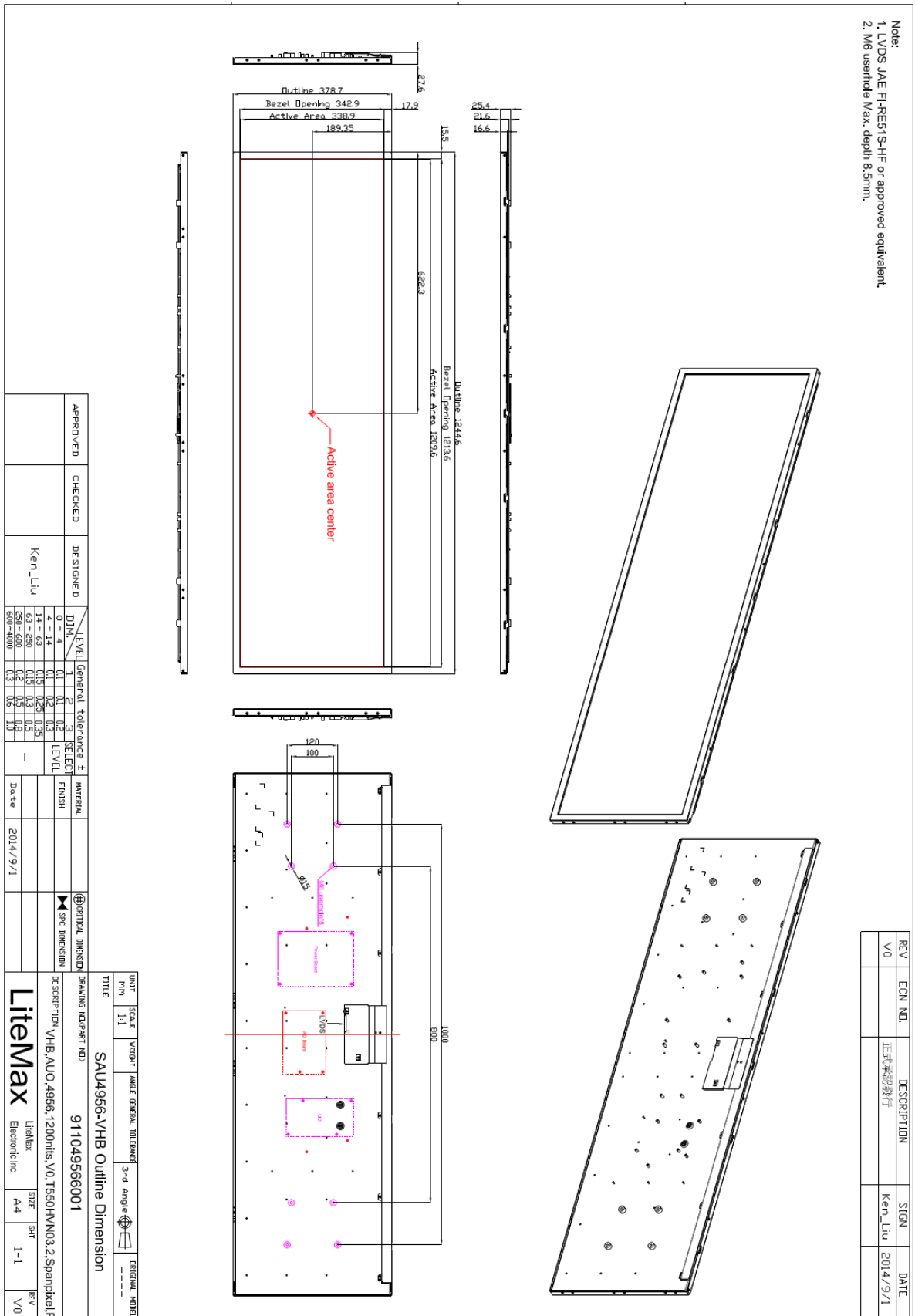
SSH= Panel + LED Driving Board + Control Board



Mechanical Drawing

Outline Dimensions

Unit:mm



Note:
 1. LVDS JAE F-RE51-S-HF or approved equivalent.
 2. Mo userhole Max. depth 8.5mm.



Ordering Information

Model Name	Description
SSF4956-ANN-A01	49.5",1200nits,1920x538,LID49A,V01
SSH4956-ANN-G01	49.5",1200nits,1920x538,LID49A,AD2662GDHMVAR,AC100~240V,V01

Optional Accessories

Part Number	Description
980000460010	SET.OTHER,ADAPTER REWORK.60W PAA060F WITH.POWER DIN 4pin lock,P
810618301010	CABLE.POWER.AC.1830mm USA type
810618301090	CABLE,POWER,AC,1830mm Europe type
810618301050	CABLE.POWER.AC.1830mm UK type
810618301170	CABLE.POWER,AC,1830mm Australia type
810618301031	CABLE.POWER.AC.1830mm Japan type