



## NPD0835 8.4" IP68 & IP65 Sunlight Readable Marine Display

NAVPIXEL NPD0835, the high-performance, rugged touch monitor, is specially engineered to survive from the most demanding working environment. Housed in a milled billet aluminum case, the slim-profile NAVPIXEL NPD0835 is light weight and watertight. The front-mounted sunlight readable touch screen makes the industrial rugged monitor vividly and user-friendly. In addition, the high power efficiency and low heat design guarantee the stability and longevity required for mission critical deployment.

### Features:

- 1000 nits Sunlight Readable LCD
- Long Life, Low Power Consumption LED Backlight
- Wide Operating Temperature
- Advanced Optical Bonding (AOT)
- High Shock & Vibration Resistance
- IR Touch Support (front IP65 design)
- AR glass support (IP68 design)
- 9-36V DC Input

### Application:

- Marine



## Specifications

V1

<b>Model Number</b>	<b>NPD0835</b>
<b>Description</b>	<b>8.4" IP68 Sunlight Readable Marine Display</b>
<b>Backlight</b>	LED Backlight
<b>Active Display Area</b>	170.4 x 127.8mm
<b>Brightness</b>	1000 cd/m <sup>2</sup>
<b>Resolution</b>	800x600(SVGA)
<b>Contrast Ratio</b>	450:1
<b>Pixel Pitch (mm)</b>	0.213(H) x 0.213 (V)
<b>Viewing Angle</b>	130 (H), 115(V)
<b>Display Color</b>	16.2M
<b>Response Time</b>	35ms
<b>Inputs</b>	VGAX1
<b>PIP Support</b>	NA
<b>Mechanical</b>	
<b>IP Rating</b>	Waterproof IP68 & IP65 standards
<b>Construction</b>	Rugged Aluminum Alloy Chassis
<b>Mounting</b>	VESA mount
<b>Dimension</b>	250(W)x200(H)x64(D)
<b>Net Weight</b>	3Kg
<b>Power</b>	
<b>Voltage</b>	DC Input Voltage: DC 9~36V
<b>Power Consumption</b>	9.5W
<b>Environmental</b>	
<b>Operating Temperature</b>	-20°C~60°C
<b>Non-Operating Temperature</b>	-30°C~75°C
<b>Certification</b>	CE / FCC
<b>Marine Type Approval</b>	BV Rule IACES-E10 certification, comply with IEC 60945

*Specifications are subject to change without notice.*

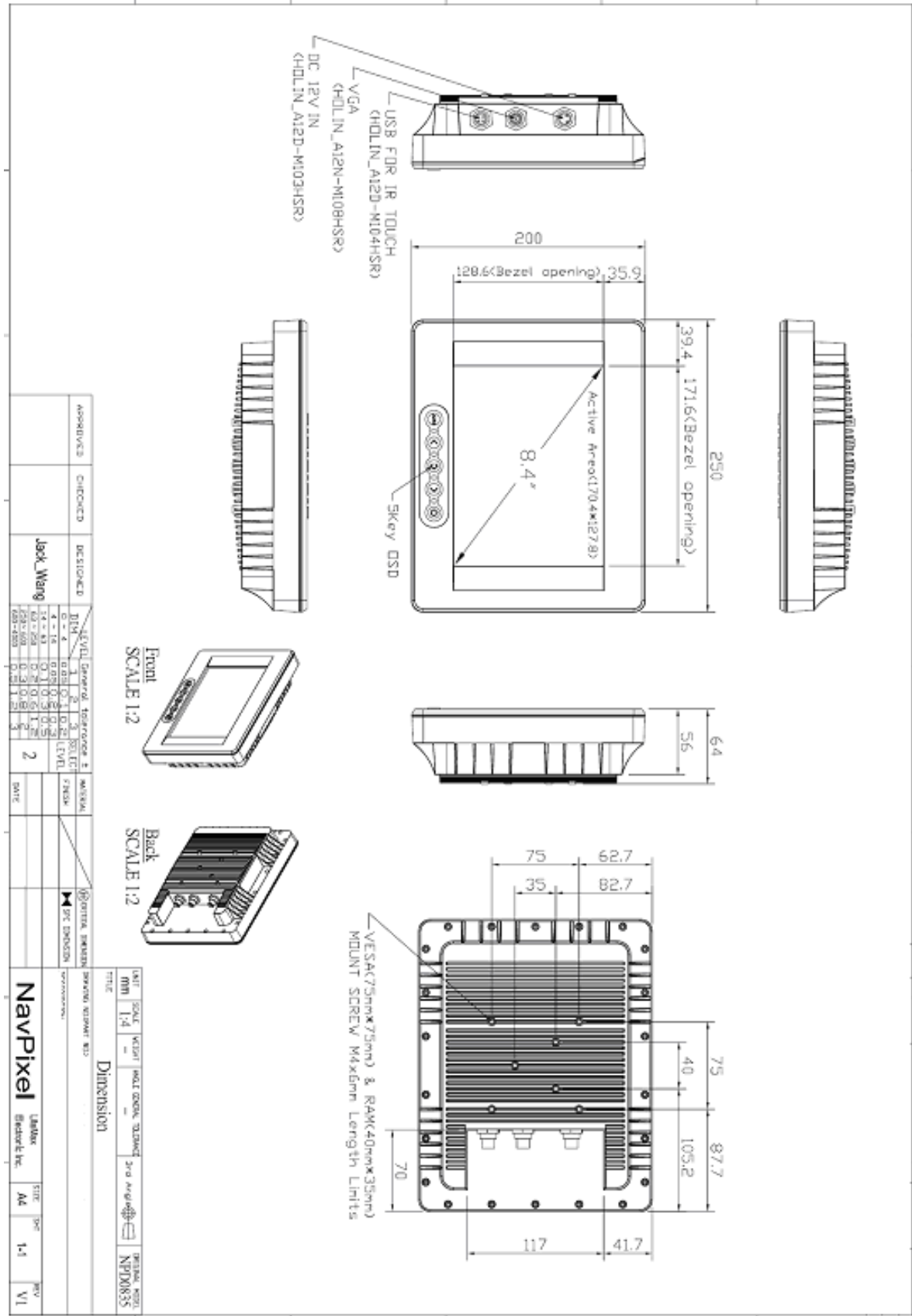
*All brands or product names are trademarks or registered trademarks of their respective companies.*



# Mechanical Drawing

## Outline Dimensions

Unit:mm





### Ordering Information

Part Number	Description
NPD0835-EGAW-A21	8.4",1000nits,SVGA,LID08A05.O/F,AR Glass,AD5621G,WP,AOT,P,V02
NPD0835-ETAW-A21	8.4",1000nits,SVGA,T/IR-USB.LID08A05,O/F,AD5621G,WP,AOT,V02
NPD0835-ETAW-A23	8.4",1000nits,SVGA,Touch-usb.LID08A05,AD5621G,O/F,WP,AOT,Carton w/o logo,V02

### Optional Accessories

Part Number	Description
840612051103	ADAPTER,12V,5A,60W.KPA-060F,DC Plug,2.1*5.5mm.P
810118301000	CABLE,VGA,1830mm.D-SUB15P MALE TO HOLIN FEMALE.8P,WATERPROOF,P
810518301000	CABLE,OTHER,USB.USB A TYPE MALE TO HOLIN.FEMALE 4P,WATERPROOF,P
810618301000	CABLE,POWER,DC,1830mm.DC JACK TO HOLIN FEMAL 3P.WATERPROOF,P
810618301010	CABLE.POWER.AC.1830mm USA type
810618301090	CABLE,POWER,AC,1830mm Europe type
810618301050	CABLE.POWER.AC.1830mm UK type
810618301170	CABLE.POWER,AC,1830mm Australia type
810618301030	CABLE.POWER.AC.1830mm Japan type