

InnoDisk PCIeDOM

Installation and Setup manual

Rev. 1.0

Table of Content

1. INTRODUCTION.....	3
1.1 Features of InnoDisk PCIeDOM	3
1.2 Checklist	3
1.3 System Requirement	4
2. Installing the hardware and software.....	4
2.1 Hardware installation	4
2.1.1 Hardware description	4
2.1.2 Installation of the PCIeDOM.....	4
2.2 Software installation.....	5
2.2.1 Installing operation system with PCIeDOM.....	5
2.2.2 Installing driver under Windows operation system.....	10
3. Technical Assistance	16
3.1 Frequently Asked Questions (FAQ).....	16
3.2 Technical Support	16
4. Warranty.....	16
5. Trademark and Copyright	16

1. INTRODUCTION

PCI Express has been adopted as a mainstream interface of storage, which dramatically increases data transfer bandwidth and application performance.

InnoDisk PCIe DOM is a revolutionary innovation of disk on module with PCIe Express interface, which brings you new generation of storage solution, especially focused on embedded systems.

Comparing with most PCIe devices in the market, PCIe DOM comes with unique design, as well as patented mechanism, which provides a tiny but solid storage device.

1.1 Features of InnoDisk PCIeDOM

- Smallest PCI Express disk on module
- PCI Express x1 specification, compatible with PCIe x4, x8, and x16
- Built in ECC and Wear-Leveling function
- Patented mechanical design.
- Anti-shock and vibration
- Easy to plug and play
- Beneficial and flexibility for motherboard(system) design

1.2 Checklist

- InnoDisk PCIeDOM
- Installation and setup manual

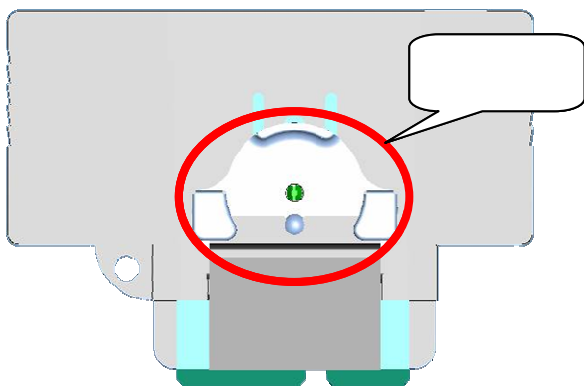
1.3 System Requirement

- Intel Pentium[®] or compatible system with PCI Express x1 slot
- MS Windows XP, Vista, 7, and Linux Red Hat
- Floppy disk (For installing Windows XP)
- USB Drive (For installing Windows Vista and 7)

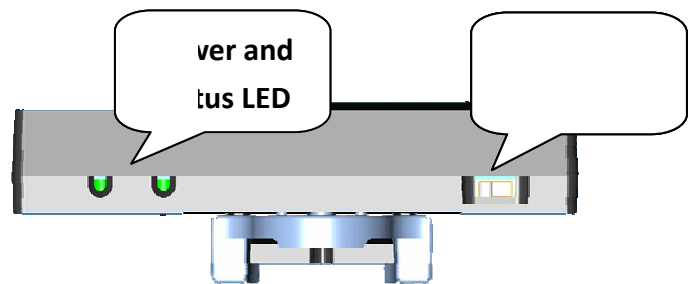
2. Installing the hardware and software

2.1 Hardware installation

2.1.1 Hardware description



Bottom



Top

2.1.2 Installation of the PCIeDOM

- InnoDisk PCIeDOM requests a PCIe Express x1 slot.
- Find out an available PCI Express slot, and plug the InnoDisk PCIeDOM.
- Push down the holder stuck to the latch.

2.2 Software installation

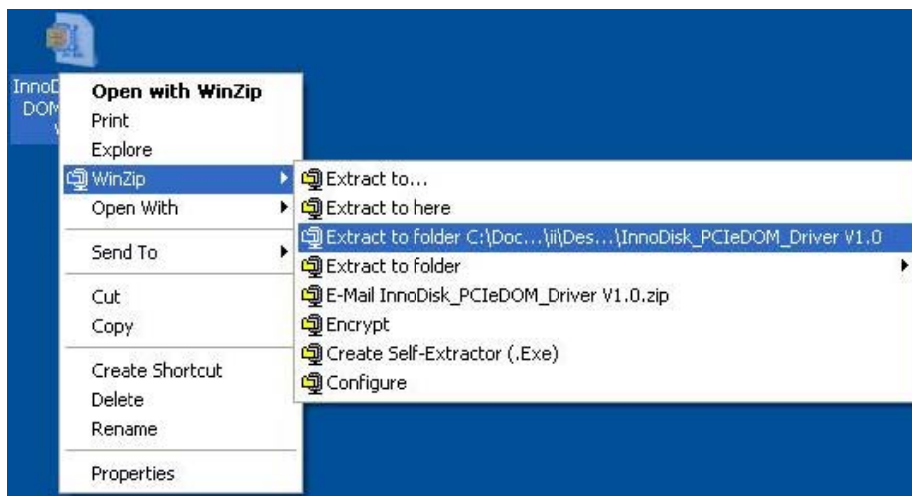
2.2.1 Installing operation system with PCIeDOM

2.2.1.1 Windows XP

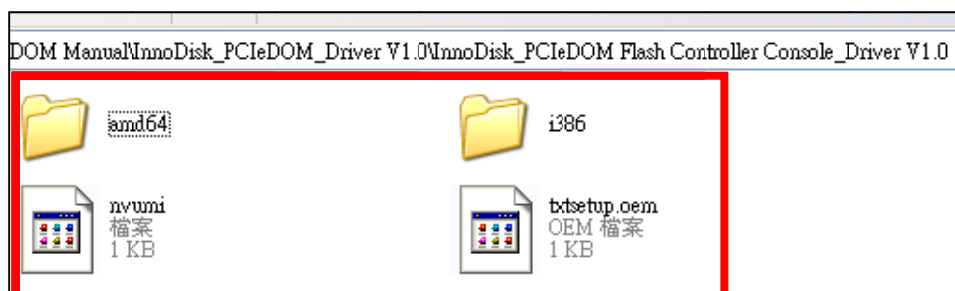
- Download the driver form below website:

<http://www.innodisk.com/download.jsp>

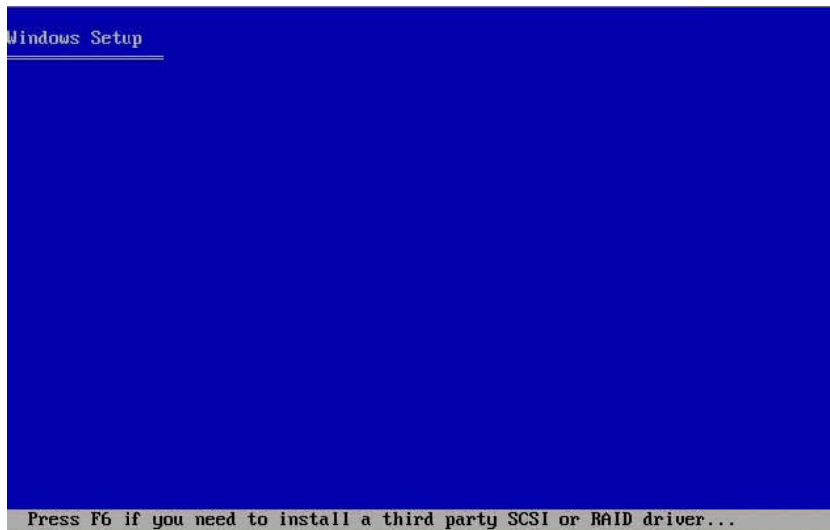
- Extract the driver to desktop



- Copy all files from **InnoDisk_PCIEDOM Flash Controller Console_Driver V1.0** to a floppy disk.



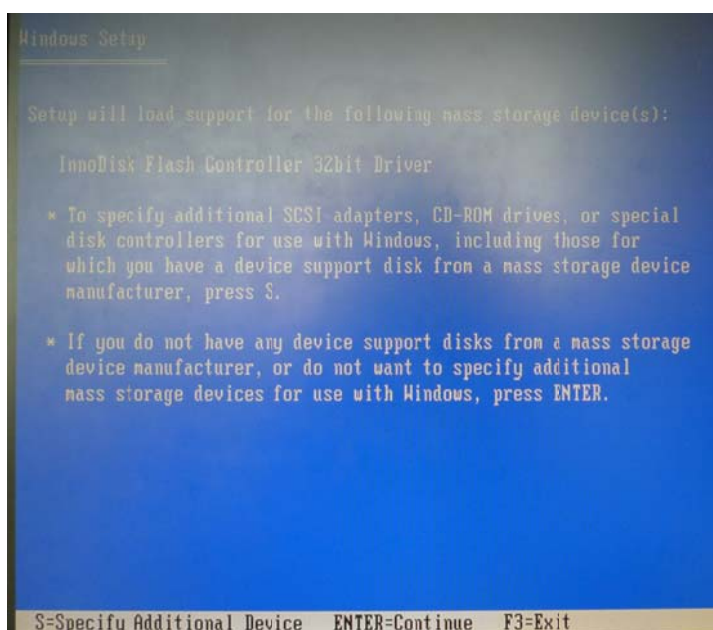
- Press F6 to install driver



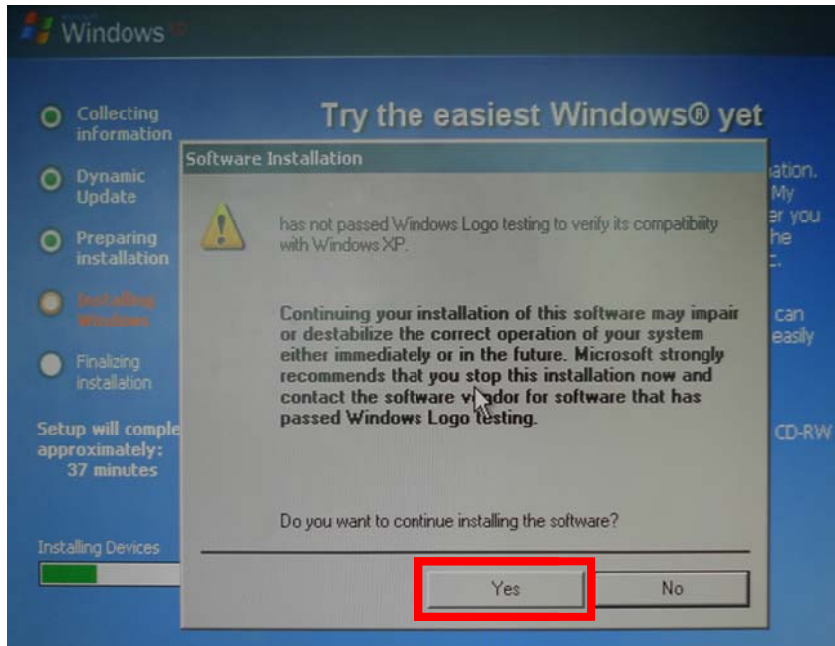
- Choose “InnoDisk Flash Controller 32bit Driver” (depends on OS)



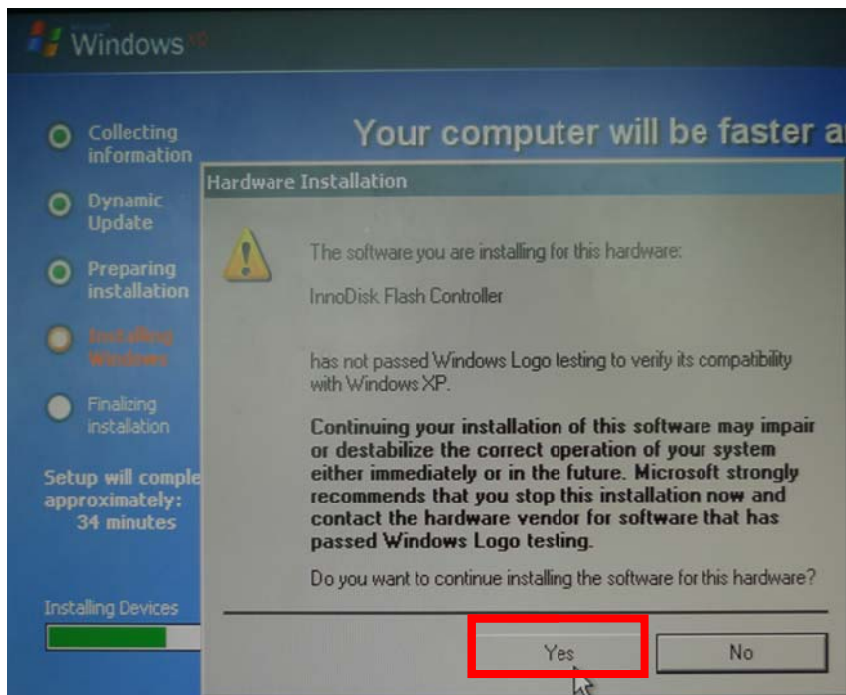
- Continued to install



- Choose “Yes”, when below screen showed.



- Choose “Yes”, when below screen showed.

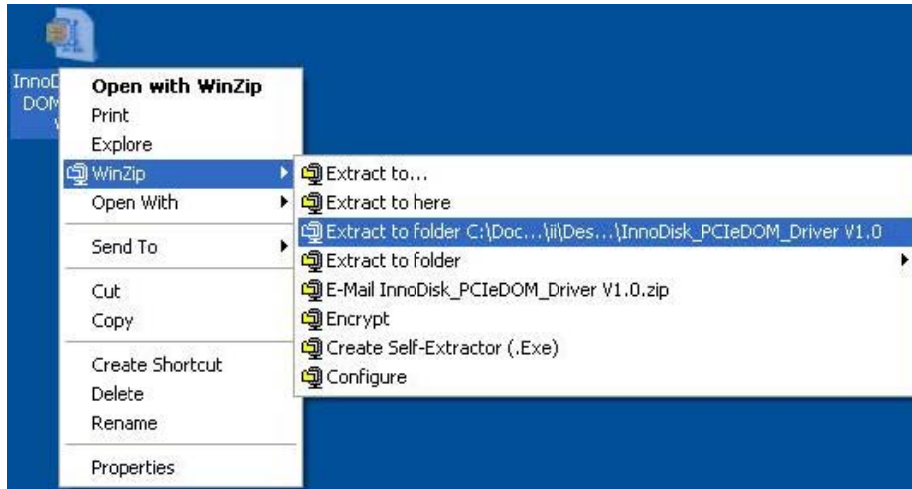


2.2.1.2 Windows 7

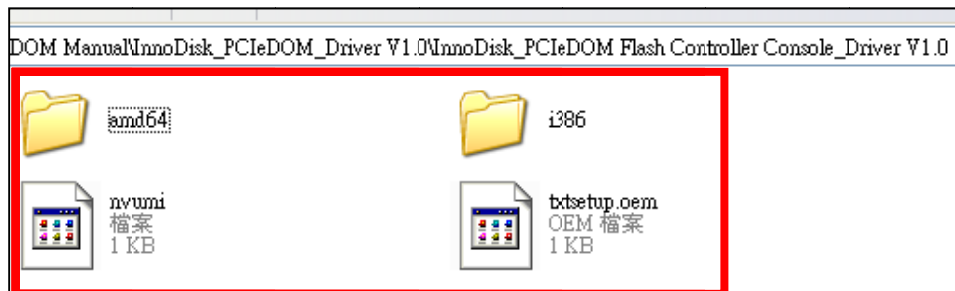
- Download the driver form below website:

<http://www.innodisk.com/download.jsp>

- Extract the driver to desktop

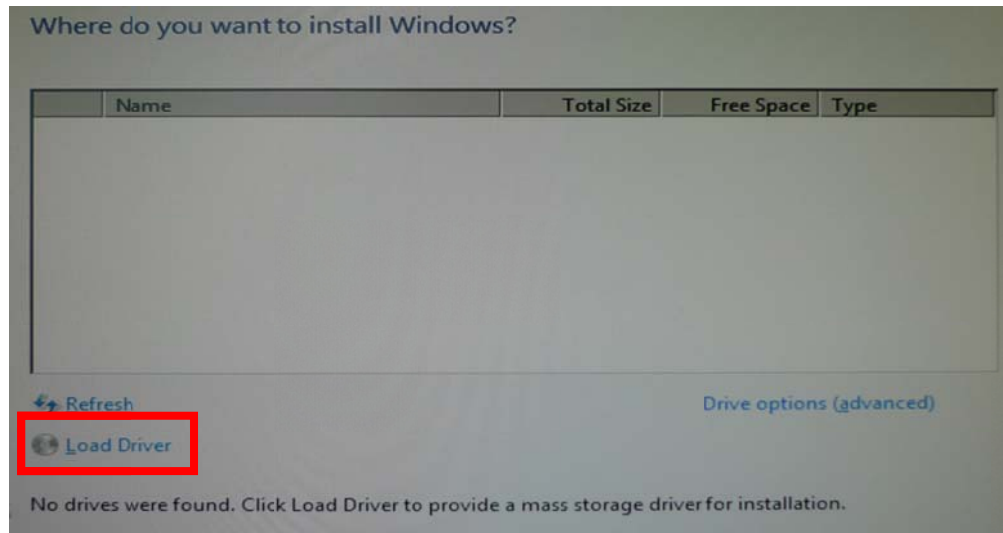


- Copy all files from **InnoDisk_PCieDOM Flash Controller Console_Driver V1.0** to a USB drive.

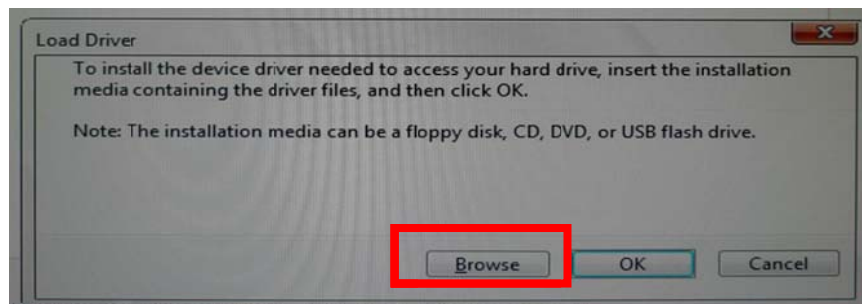


- Boot up the system with Windows 7 DVD, and plug the USB drive with drivers.

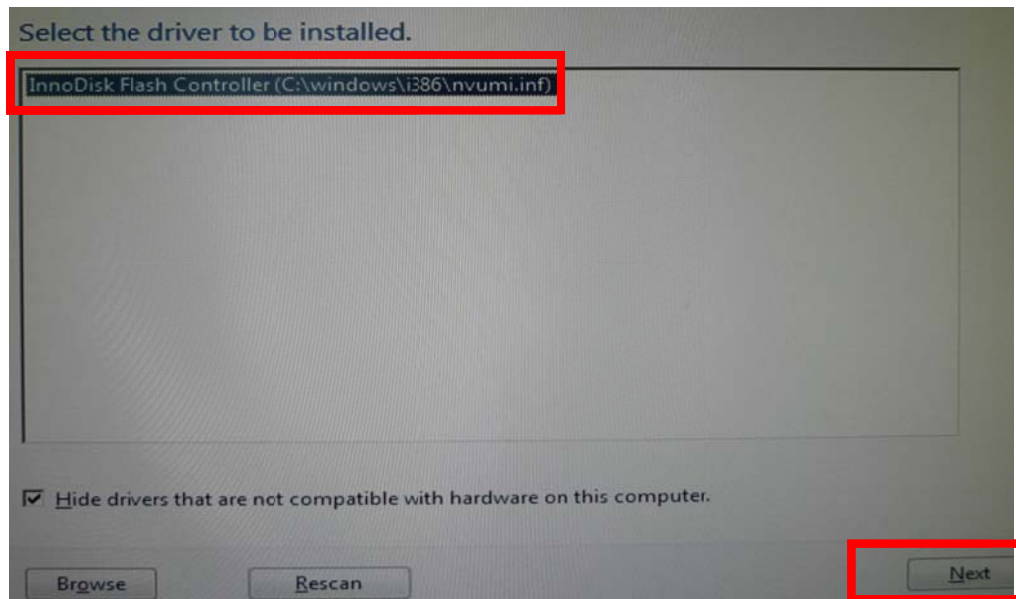
- Choose “Load Driver” when below screen showed.



- Choose “Browse” to load the driver



- Continued to install the OS, when driver loaded



2.2.1.3 Linux

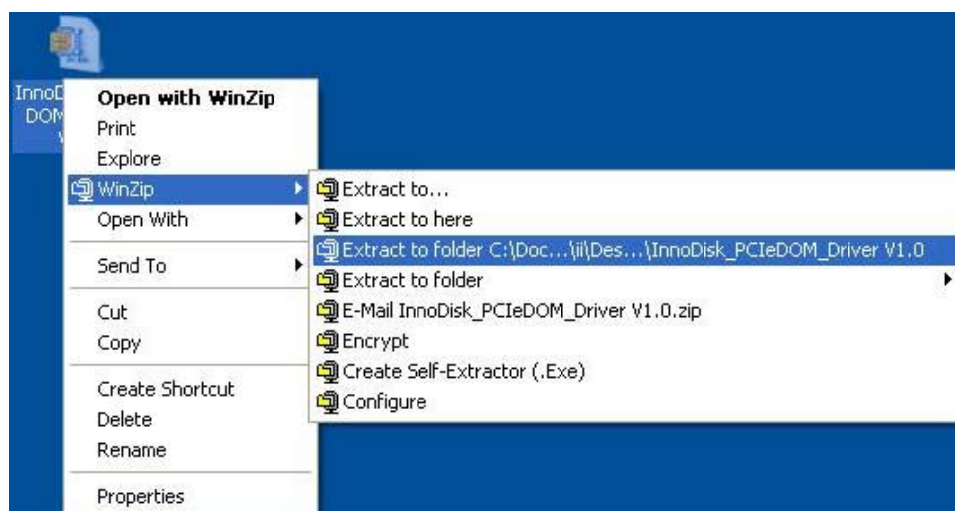
TBD

2.2.2 Installing driver under Windows operation system

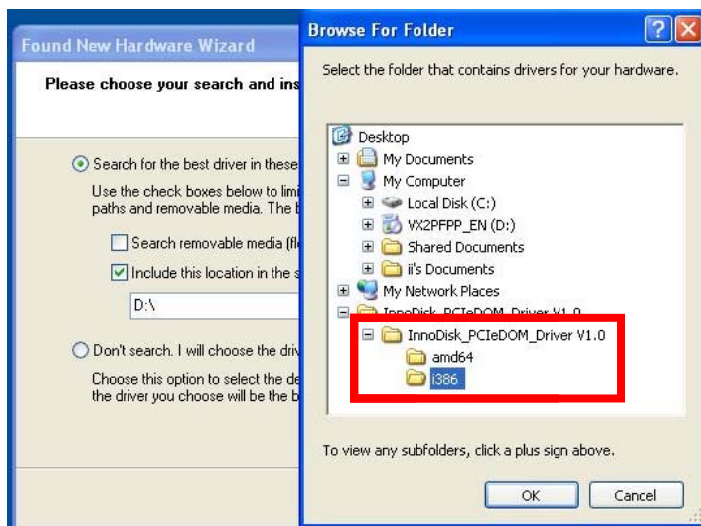
- Download the driver form below website:

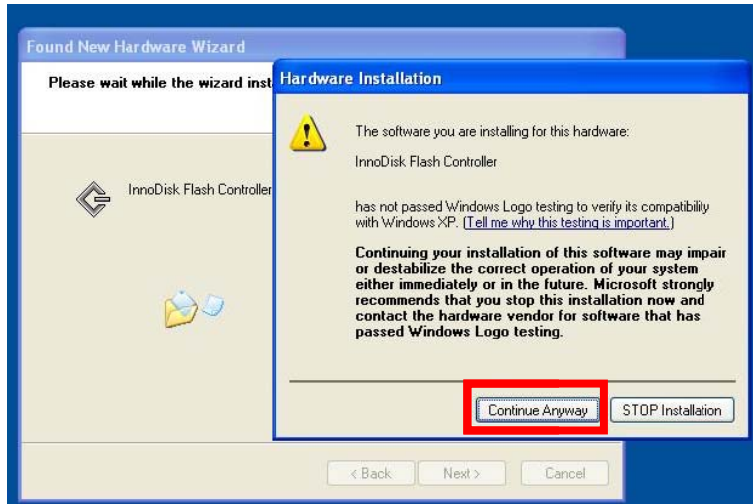
<http://www.innodisk.com/download.jsp>

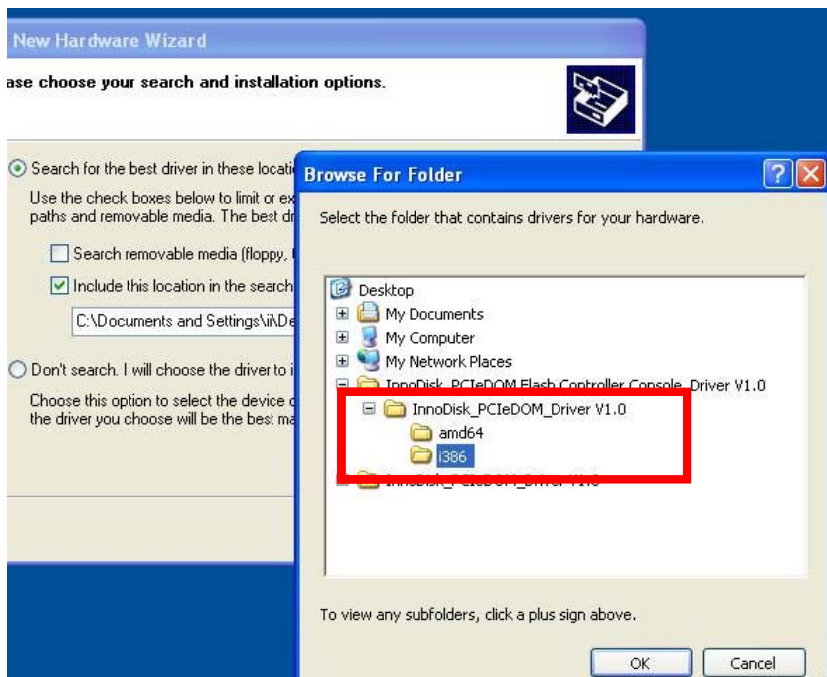
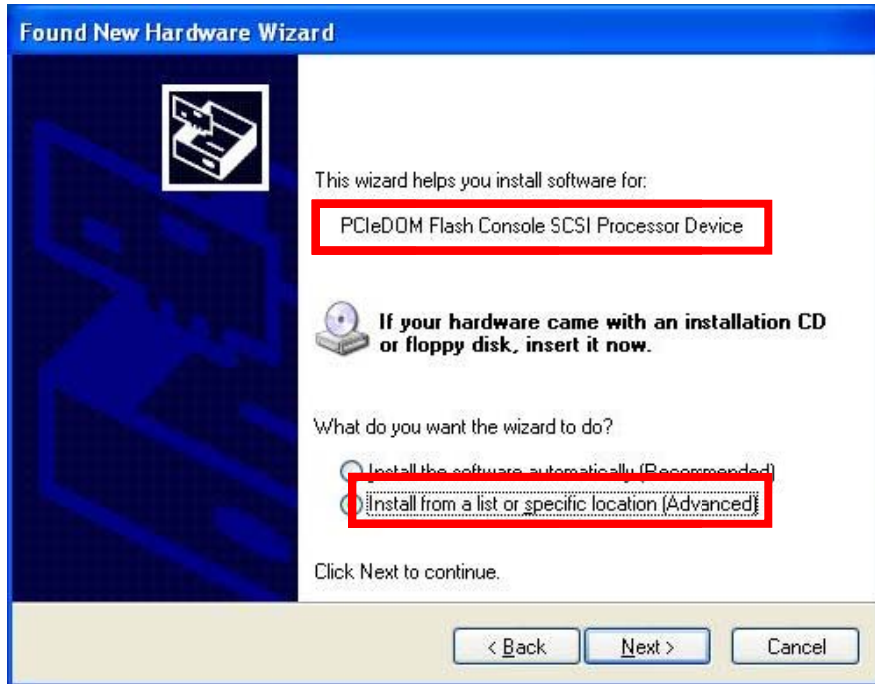
- Extract the driver to desktop

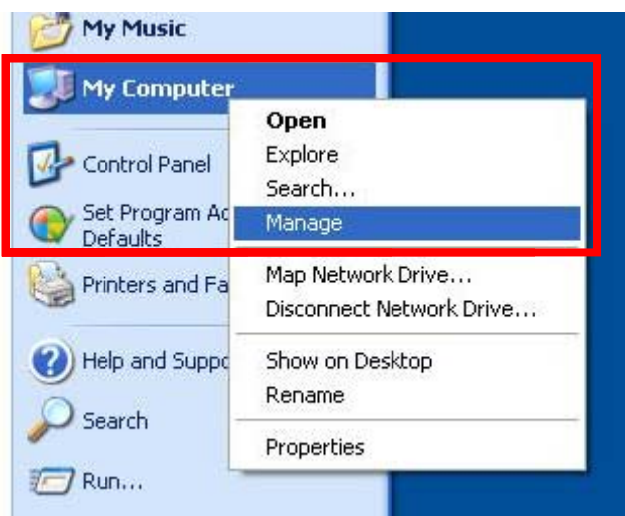


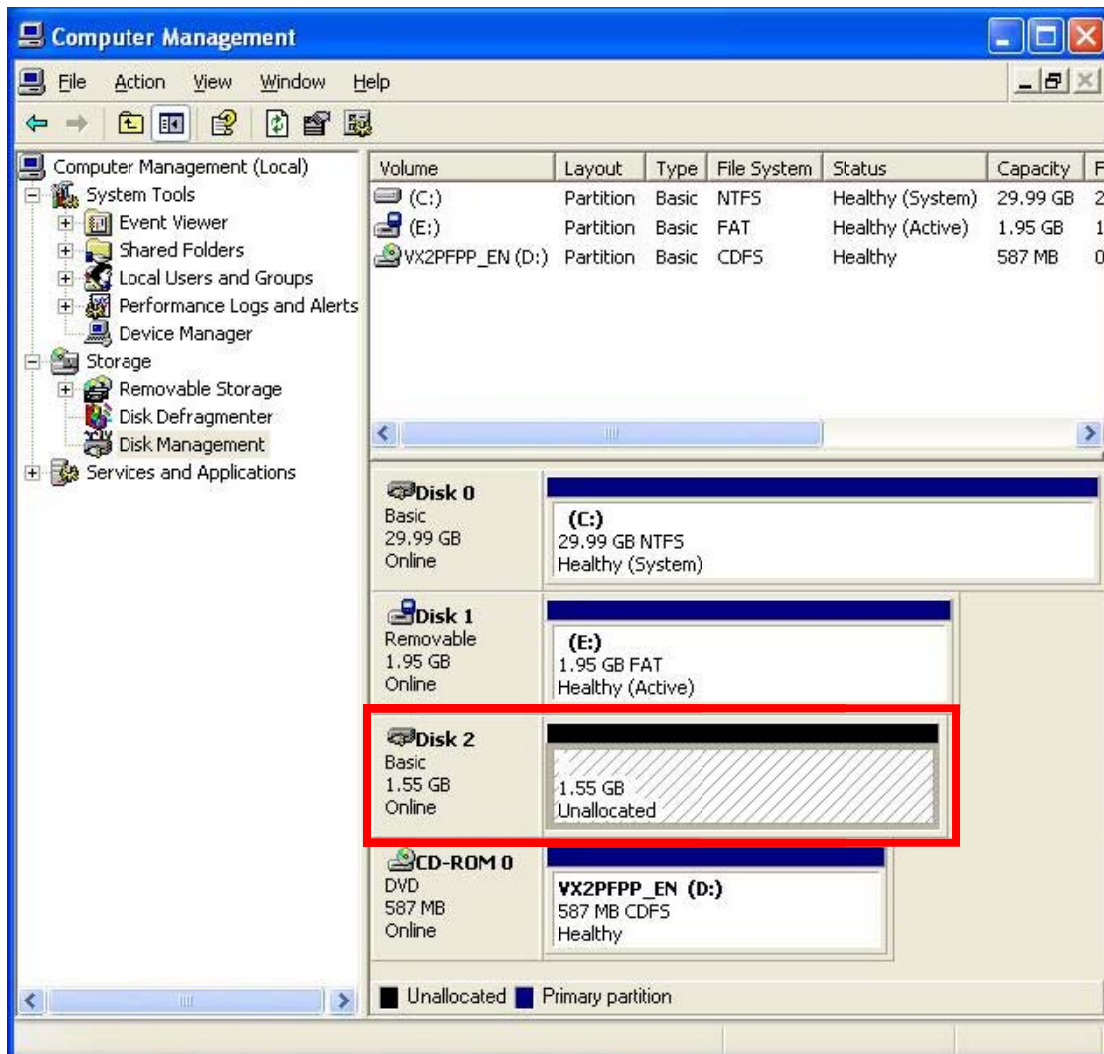
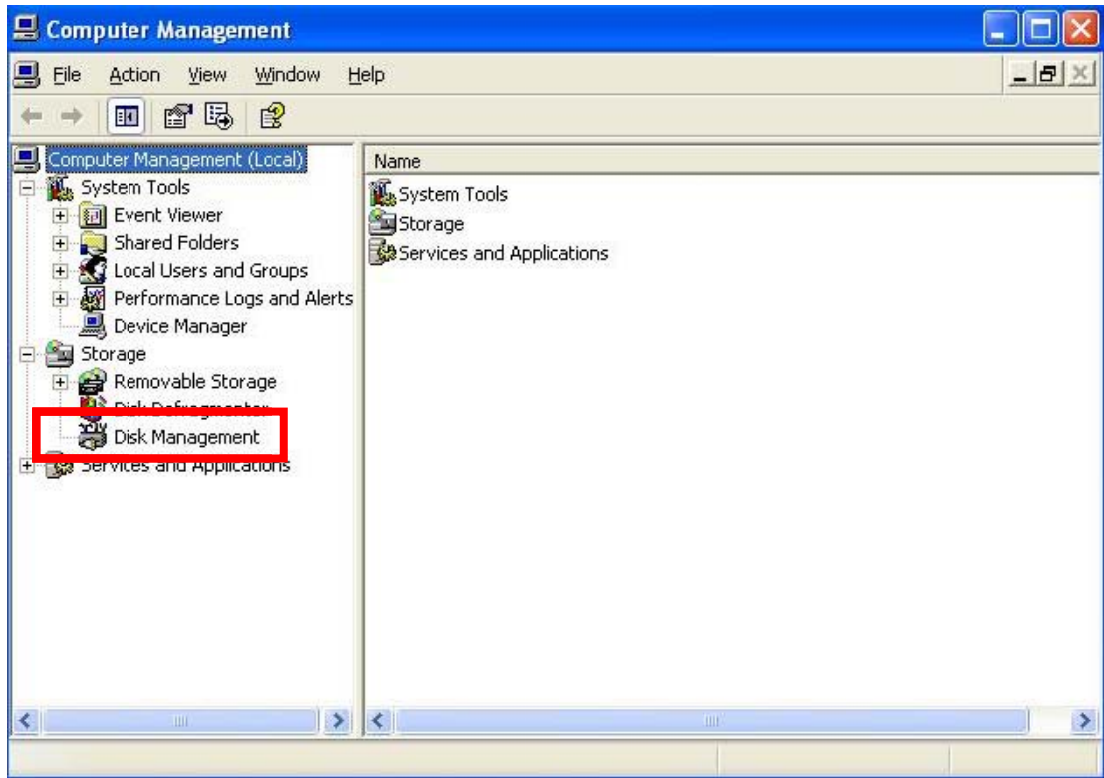
- Follow below steps to install the driver:











3. Technical Assistance

3.1 Frequently Asked Questions (FAQ)

3.2 Technical Support

4. Warranty

5. Trademark and Copyright