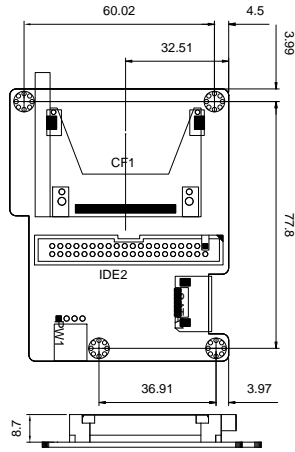


# SATA/IDE/CF Type II Carry Board

SATA/IDE/CF converter board



**SAIDE-KIT01-R10**  
SATA/IDE/CF converter board

## Features

1. CF Type II Socket
2. 40-pin IDE connector (Master mode)
3. 4-pin 5V input connector
4. Power/5V/HDD LED indicator



32100-064401-RS

## Packing List

1 x SAIDE-KIT01-R10	1 x Power Cable (P/N:32100-171800-RS)	1 x QIG
---------------------	---------------------------------------	---------

## Ordering Information

SAIDE-KIT01-R10	SATA to 40-pin IDE/CF socket converter board with bracket
32000-062800-RS	SATA cable
32100-088600-RS	SATA power cable
32100-064401-RS	Power cable