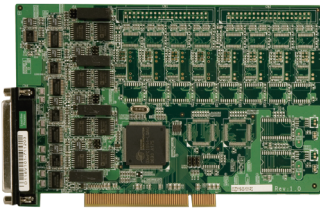


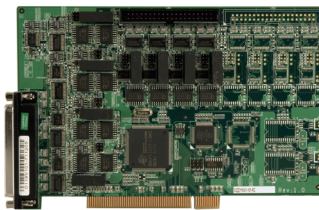
PCI Interface Communication Add-on Card

PCI 4-port, 8-port, 12-port Isolated RS-232/422/485 communication card



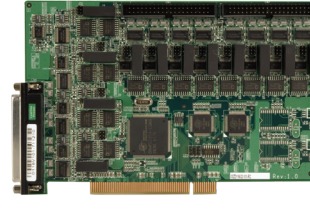
PMS-400-R10

PCI 4-port, Isolated RS-232/422/485 communication card



PMS-800-R10

PCI 8-port Isolated RS-232/422/485 communication card



PMS-1200-R10

PCI 12-port Isolated RS-232/422/485 communication card

Features

1. PCI v2.1 interface with RoHS compliance
2. 16C950 UART Controller
3. Support shared IRQ
4. Individual jumper selections for RS-232/422/485
5. Data transmission speeds up to 921.6 Kbps
6. 128-byte deep FIFO per transmitter and receiver
7. On-board 15KV ESD protection
8. Isolated 3000Vdc DC protection
9. OS Supported Windows 2000/XP/2003, Linux



4 x DB9 connector cable
P/N (32000-088800)

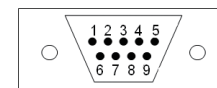
DB37 female flat cable
P/N (32000-076000)

Every DB37 female flat cable with connector cable can support four RS-232/422/485

Pin Definition

	RS-232	RS-422	RS-485
1	DCD	RX-	Data-
2	RxD	RX+	Data+
3	TxD	TX-	
4	DTR		
5	GND		
6	DSR		
7	RTS	TX+	
8	CTS		
9	RI		

Connector



Specifications

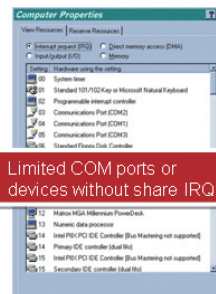
Bus Interface	PCI ver. 2.1 interface
I/O controller	16C950 UART Controller
Number of Ports	4-port (PMS-400-R10) / 8-port (PMS-800-R10) / 12-port (PMS-1200-R10)
Data Bits	5,6,7,8
Stop Bits	1, 1.5, 2
Parity	None, Even, Odd
Speed	50bps ~ 921.6 Kbps
Connectors	4 / 8 / 12 DB9 male
ESD protect (Human Body Mode)	±15KV
Isolation Protection	3000 Vdc
Supported OS	Windows 2000/XP/2003, Linux
Power Consumption	5V @ 450 mA
Temperature	operation: -5°C ~ 65°C (23°F ~ 149°F)
Humidity	operation: 5% ~95 non-condensing
Dimension	114 mm x 185 mm

Packing List

1 x PCI 4/8/12-Port RS-232/422/485 Communication Card
1 x COM port cable with 4xDB9 connector (P/N: 32000-088800) for PMS-400-R10
2 x COM port cable with 4xDB9 connector (P/N: 32000-088800) for PMS-800-R10
1 x Flat Cable (P/N: 32200-076000) for PMS-800-R10
3 x COM port cable with 4xDB9 connector (P/N: 32000-088800) for PMS-1200-R10
2 x Flat Cable (P/N: 32200-076000) for PMS-1200-R10
1 x Mini Jumper Pack
1 x Utility CD
1 x QIG

Ordering Information

Part No.	Description
PMS-400-R10	PCI Bus, 4-port Isolated RS-232/422/485 Communication Card
PMS-800-R10	PCI Bus, 8-port Isolated RS-232/422/485 Communication Card
PMS-1200-R10	PCI Bus, 12-port Isolated RS-232/422/485 Communication Card



Share IRQ Benefit :

- Reserve more resource for system devices.
- Easy to programming each COM port.
- Reduce system integration time.

FIFO



FIFO is the default queuing algorithm in some instances, thus requiring no configuration. FIFO queuing makes no decision about packet priority; the order of arrival determines bandwidth, promptness, and buffer allocation. FIFO queuing was a necessary first step in controlling data traffic.

ESD / Isolated protection



IEI Provides :

1. On-board 15KV ESD protection
2. Isolated 3000Vdc protection

An integrated circuit (IC) connected to external ports is susceptible to damaging electrostatic discharge (ESD) pulses from the operating environment and peripherals. Additional protection can violate stringent signaling requirements, leaving design engineers with the need to balance performance and reliability.