

PM-P003 PC/104 65W DC to DC Converter Module

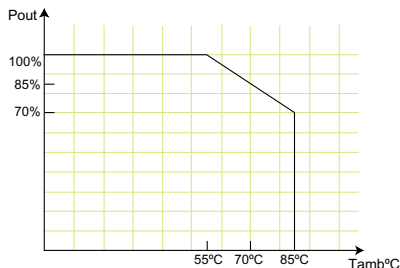


Features

- High Efficiency up to 90%
- Over Voltage Protection
- Over Current Protection
- Input Power Protection
- Short Circuit Protection
- Low Quiescent Current
- Low EMI & RFI
- RoHS Compliant
- Remote On/Off
- Non-isolated Type

Specifications

- Output: 5V@13A (Max.) & 12V@5A (Max.)
Max. Total Output: 65W
- Input: 8VDC to 36VDC
- Performance Characteristics
Line Regulation: <20mV*
Load Regulation: <150mV
Efficiency: up to 90%
Quiescent Current: <2mA**
* Measure on 5V output
** The LEDs are disabled.
- Remote On/Off (jumper select)
signal PS_ON control Power On/Off
Active High or Active Low
- Dimensions: 3.775" X 3.55"
- Weight: GW: 445g; NW: 182g
- Operating Temperature: -40°C ~ 85°C



PIN Assignments

Primary Input Power Terminal

CN1	Pin1	Pin2
	GND	VIN1

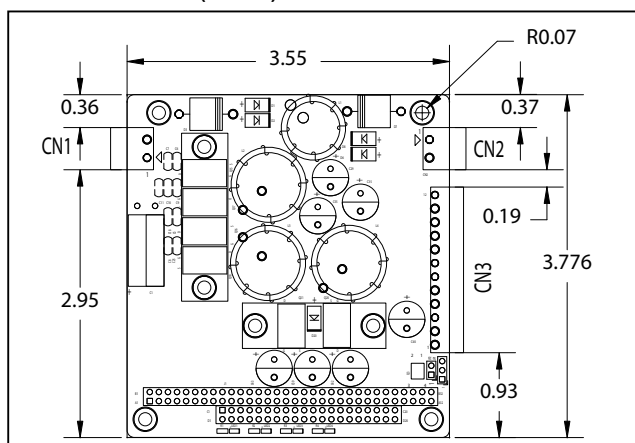
Secondary Input (Pass thru.)

CN2	Pin1	Pin2
	GND	VIN2

Output Power Terminal

CN3	Pin1	Pin2	Pin3	Pin4	Pin5	Pin6
	PW_OK	PS_ON	GND	+12V	+12V	GND
	Pin7	Pin8	Pin9	Pin10	Pin11	Pin12
	GND	+5V	+5V	+5V	+5V	GND

Dimensions (Inches)



Packing List

- 1 x PM-P003
- 1 x Manual

Ordering Information

Part No.	Description
PM-P003-R10	65W DC/DC 8-36VDC input; 12V, 5V output