

IDDUPS-6364120A/636260A



120W/60W DC/DC Converter Module, with UPS



• **BAT-LI-2S1P3000**
Smart Battery, Li-Polymer,
2S1P, 3000mAH

• **BAT-LI-2S1P3000**
Smart Battery, Li-Polymer,
2S1P, 3000mAH

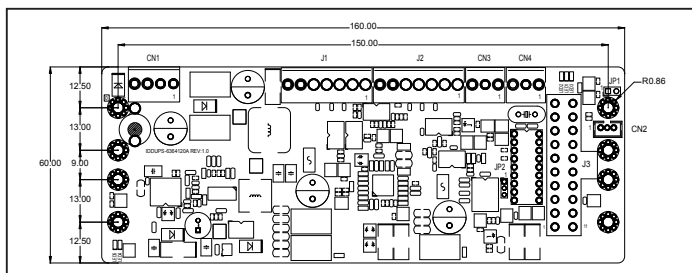
• **IDDUPS-6364120A**

• **IDDUPS-636260A**

Features

1. Load Down Protection
2. Over Voltage Protection
3. Short Circuit Protection
4. Over Current Protection
5. Smart Battery Charger for Li-Polymer
6. I/O interface: SMBus/I2C & RS232
7. Support up to 2 battery packs
8. AT/ATX modes
9. Utility Program: Pull data out through RS232 to system

Dimensions (Millimeters)

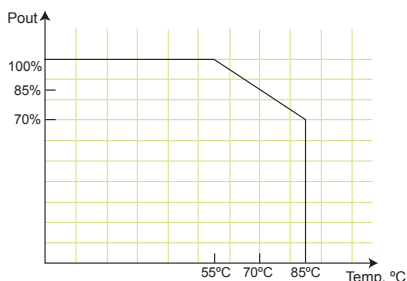


Specifications

Output:

Voltage (Max.load)	+5V	+12V	-12V	+3.3V	+5VSB
IDDUPS-6364120A	10A	4A	0.3A	8A	2A
IDDUPS-636260A	10A	3A			0.5A

- Input: 6VDC to 36VDC
- Battery Charge Voltage: 12V ~ 36V
- Efficiency: up to 90%
- Dimensions: 60mm x 160mm
- Weight: NW: 98g (IDDUPS-6364120A), 75g (IDDUPS-636260A)
- Operating Temperature: -20°C ~ 85°C
- Storage Temperature: -40°C ~ 125°C



Packing information

- 1 x IDDUPS-6364120A or IDDUPS-636260A
- 1 x QIG
- 1 x CD utility software
- 1 x DB-9 pin connector cable (32100-157200-RS)

Ordering Information

Part No.	Description
IDDUPS-6364120A-R10	120W ATX DC/DC 6-36VDC input, 12V, 5V, 3.3V, -12V and 5VSB Power Module with UPS
IDDUPS-636260A-R10	60W ATX DC/DC 6-36VDC input, 12V, 5V and 5VSB Power Module with UPS
BAT-LI-2S1P3000	Smart Battery, Li-Polymer, 2S1P, 3000mAH
CB-5PSBC-RS	20cm Cable to SBC Power Input
CB-JST3PSW-RS	30cm Cable ON/Off Switch
CB-JST3P001-RS	30cm 5VSB, PS_ON Wire to SBC
CB-3PSATA-RS	10cm Cable for SATA Power
CB-3PIDE-RS	10cm Cable for IDE HDD Power
CB-P1LP4-RS	20cm Cable for FSP0601AD101C 60W/UP0451E12P 45W/UP0251E12PL 25W AC-DC adapter
CB-MD4P4-RS	20cm Cable for 63000-FSP120AAB-RS 120W AC-DC adapter
CB-NOLP4-RS	20cm Cable for Terminal Block DC Input
CB-ATX20P-RS	30cm 20 Pins ATX to 20 Pins ATX Cable

Applications



Battery Backup System



Portable Equipment



Power Sensitive Equipment

High Energy Density / Light Weight / Compact -DC / DC UPS & Power Module

Protect your precious equipment from damage. Reduce risk of losing valuable data.

Uninterruptible Power Systems is a significant product that serves as emergency power when you suffer from electric event.

Benefit:

- Provide power for certain period of time after a power fail has occurred.
- Continue to provide stable power to equipment during line sags & spikes.
- Absorb power surges & transients.
- Smooth out noisy power sources.

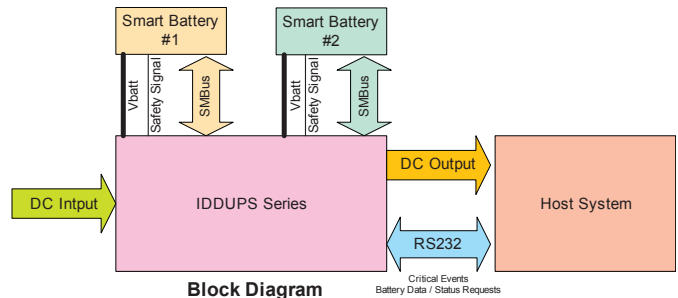
In addition, the utility software provide the following functions:

- Current Power source.
- Battery status.
- Charging status.
- Percentage remaining

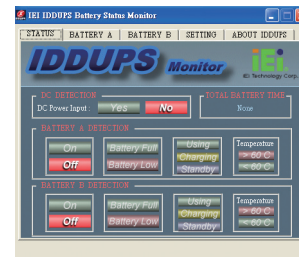


Battery Capacity Status

Level 2 Smart Battery Charger & Power Modules



Block Diagram



Battery Monitoring Utility



Battery Monitoring connection cable (PN: 32100-157200-RS)

Battery Pack: Part # BAT-LI-2S1P3000



Battery Type	Li-Polymer			
Pout(W)	100	80	60	40
C(WHr)	15.0	20.0	23.0	24.0
Time(min)	8	14	22	35
Dimensions	DR202 package 148x89x20mm			
Capacity	3000mAH			
Weight	230g			

PIN Assignments

Input Power Connector

CN1	Pin 1	Pin 2	Pin 3	Pin 4
	VIN	VIN	GND	GND

Output Power Connector

CN3 CN4	Pin 1	Pin 2	Pin 3
	+5V	GND	+12V

For IDDUPS-6364120A

J3	Standard 20pins ATX

For IDDUPS-636260A

J3	Pin1	Pin 2	Pin 3	Pin 4	Pin 5
	+5V	+5V	GND	GND	+12V

ATX Mode Connector

CN2	Pin 1	Pin 2	Pin 3
	5VSB	GND	PS_ON

Battery Connector

J1 J2	Pin1	Pin 2	Pin 3	Pin 4	Pin 5	Pin 6	Pin 7
	BAT+	BAT+	Clock	Data	Temp	GND	GND

Wire Harness Selection Guide

DC Input



Options 1.

PN: **CB-P1LP4-RS**

Cable for FSP0601AD101C 60W/UP0451E12P 45W/UP0251E12PL 25W AC-DC adapter



Options 2.

PN: **CB-MD4P4-RS**

Cable for 63000-FSP120AAB-RS 120W AC-DC adapter



Options 3.

PN: **CB-NOLP4-RS**

Cable for Terminal Block

SBC Main Power



Options 1.

PN: **CB-ATX20P-RS**

20 Pins ATX to 20 Pins ATX Cable

I/O Power



Options 1.

PN: **CB-3PSATA-RS**

Cable for SATA



Options 2.

PN: **CB-3PIDE-RS**

Cable for IDE HDD or any STD 4 pins I/O devices

Power On/Off



Options 1.

PN: **CB-JST3PSW-RS**

Cable with On/Off Switch



Options 2.

PN: **CB-JST3P001-RS**

Cable to SBC (5VSB & PS_ON)