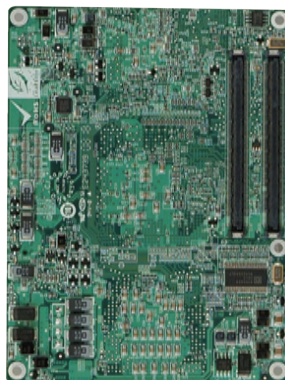
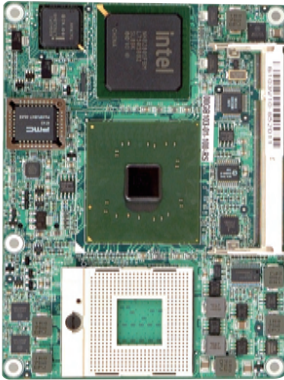


ICE-9152 / 9102

COM Express Basic Type 2 Module, Socket 479 Intel® Pentium® M / Celeron® M CPU, VGA/LVDS, LAN, CF, SATA, USB 2.0 and Audio



Specifications

- ◆ CPU
Socket 479 Intel® Pentium® M, Celeron® M processor with a 533/400MHz FSB On board Intel® Celeron® M 1GHz zero cache or 1GHz 512KB cache processor
- ◆ System Chipset
Intel® 915GME + ICH6M (ICE-9152)
Intel® 910GML E + ICH6-M (ICE-9102)
- ◆ BIOS
AMI Flash BIOS
- ◆ System Memory
One 200-pin 533/400MHz DDR2 SO-DIMM support up to 2GB (ICE-9152)
One 200-pin 400MHz DDR2 SO-DIMM support up to 2GB (ICE-9102)
- ◆ Ethernet One Intel 82541PI GbE Chipset
- ◆ I/O Interface
8 x USB 2.0 (to Base Board)
2 x SATA (to Base Board)
1 x IDE channel (to Base Board)
- ◆ Expansion
1 x PCIe x16 signal to Base Board (ICE-9152)
4 x PCIe x1 signal to Base Board
4 x PCI , 32 bit / 33 MHz PCI bus to Base Board
- ◆ Display Interface
VGA Integrated in Intel 915GME/910GML E Signal (to Base Board)
18/24-bit Dual channel LVDS Signal (to Base Board)
- ◆ Watchdog Timer
Software programmable supports 1 ~255 sec. System reset (Depend on Super I/O of Base Board)
- ◆ Power Supply
ATX / AT supported
- ◆ Power consumption
12V@1.33A (Intel® Celeron® M 373 1G/512 L2 cache, DDR2 1GB/533Mhz)
- ◆ Temperature
operation: 0°C ~ 60°C (32°F ~ 140°F)
- ◆ Humidity
operation: 5% ~95 non-condensing
- ◆ Dimension
125 mm x 95 mm

Packing List

1 x ICE-9152/9102 Single Board Computer
1 x Heatspreader
1 x Heatsink (ICE-9102)
1 x Cooler (ICE-9152)
1 x Utility CD
1 x QIG (Quick Installation Guide)

COM Express Type 2 Module

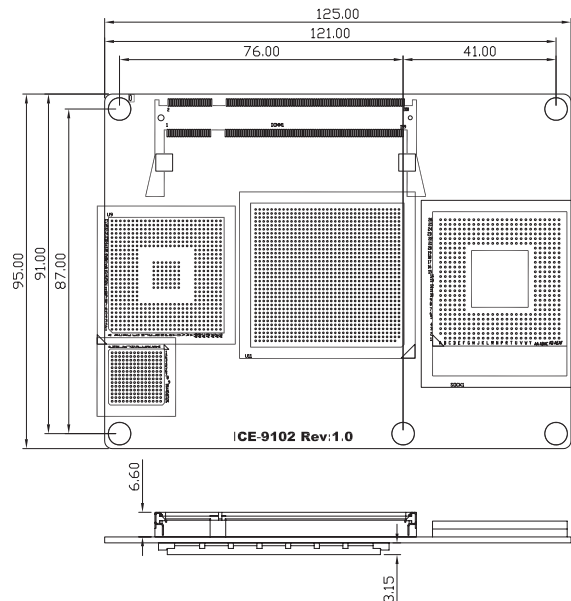
Platform	ETX 2.8	ETX 3.0	COM Express Type II Basic Module
IEI Model	IEM-LX/IEM-8522	IEM-9452	ICE-9152/9102
Module size	95x 114mm	95x 114mm	95x 125mm
Connector	4x 100pin	4x 100pin	2x 220pin
Memory	1x SO-DIMM	1x SO-DIMM	1x SO-DIMM
VGA	Yes	Yes	Yes
LCD	TTL or LVDS	TTL or LVDS	Up to 2x single LVDS or Dual channel LVDS
SDVO	N/A	N/A	Up to 2 SDVO (shared with PCIe x16)
TV	Yes	Yes	Yes
PCI	Yes	Yes	Yes
PCI express	N/A	N/A	up to 22 Lane
ISA	Yes	Yes	N/A
Ethernet	10/100 Mbps	10/100 Mbps	10/100/1000 Mbps
USB	4	4	8
SATA	N/A	on ETX CPU Module	up to 2 SATA (on COM Express base board)
IDE	2CH	2CH	1CH
Audio	Mic-In/Lin-in/Lin-Out	Mic-In/Lin-in/Lin-Out	AC97/HD interface
LPC Bus	N/A	N/A	Yes (supper I/O on base board)
PS2 Interface	Yes	Yes	by LPC bus (Supper/I/O)
Serial Port	COM1/COM2	COM1/COM2	by LPC bus (Supper/I/O)
LPT/FDD	LPT or FDD	LPT or FDD	by LPC bus (Supper/I/O)
IrDa	Yes	Yes	by LPC bus (Supper/I/O)
GPI	N/A	N/A	4
GPO	N/A	N/A	4



Features

1. COM Express Type II Basic Module
2. Support 1x PCIe x16/2x PCIe x1/4x PCI Slot for expansion
3. Support Dual Display for VGA + LVDS
4. Support 6x USB2.0, 2x SATA, IDE

Dimensions (mm)



Ordering Information

Part No.	Description
ICE-9152-R10	COM Express Socket 479 Intel® Pentium® M / Celeron® M CPU with VGA/LVDS, GbE, USB 2.0, SATA and Audio
ICE-9102-1GZ-R10	COM Express ULV Intel® Celeron® 1GHz zero cache CPU with VGA/LVDS, GbE, USB 2.0, SATA and Audio
ICE-9102-1G512-R10	COM Express ULV Intel® Celeron® 1GHz 512K cache CPU with VGA/LVDS, GbE, USB 2.0, SATA and Audio
ICE-DB-9S-R10	Base Board for COM Express Type 2 modules