

4-Channel Video Capture Card with GPIO Module

IVC-168G / IVC-268G IVCE-268G / PM-6814 Quick Installation Guide Version 1.0

October 23, 2007

Package Contents

IVC-168G/268G package includes the following items:

- Video capture card x 1
- CD x 1
- Hard copy of user manual x 1
- GPIO module: (for IVC-168G and IVC-268G only)
- GPIO daughter board x 1, flat cable x 1, input connector x 1 and output connector x 1



©2006 Copyright by IEI Technology Corp.
All rights reserved.

Specifications

■ Interface

Video Input	4 channels composite video NTSC/PAL/SECAM auto sensing
Video Connector	BNC
Audio Input	IVC-168G / PM-6814 : 1 channel analog audio. Active channel selectable IVCE-268G / IVC-268G : 4 channel analog audio
Audio Connector	Audio kit with 3.5mm audio jack connector
PCI Interface	PCI 2.1 compliance
Card ID	Selectable with LED for ID indication
Alarm I/O	GPIO daughter board with 4 inputs and 4 outputs

■ Software support

Device Driver	Windows 2000, XP Linux Kernel 2.6
SDK	Provide SDK and demo program with sample source code in C++

Ordering Information

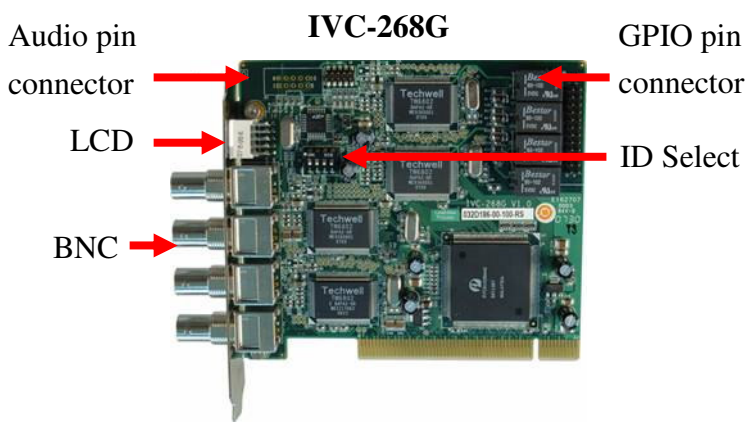
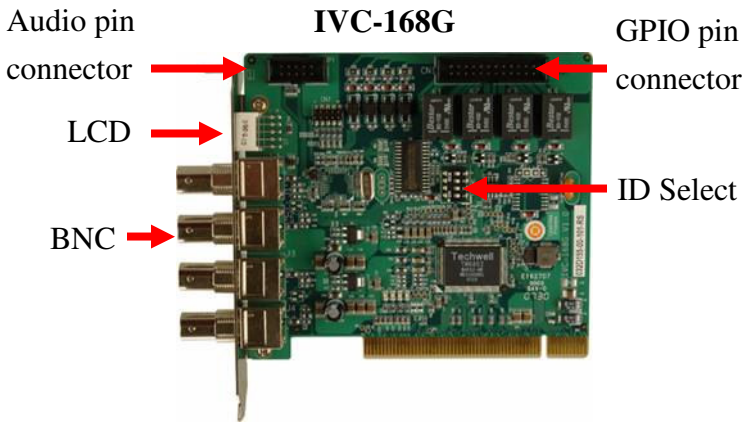
IVC-168G-R10 : PCI interface, 4 channel 30fps@D1 video and 1 channel audio capture card, RoHS.

IVC-268G-R10 : PCI interface, 4 channel 120fps@D1 video and audio capture card, RoHS.

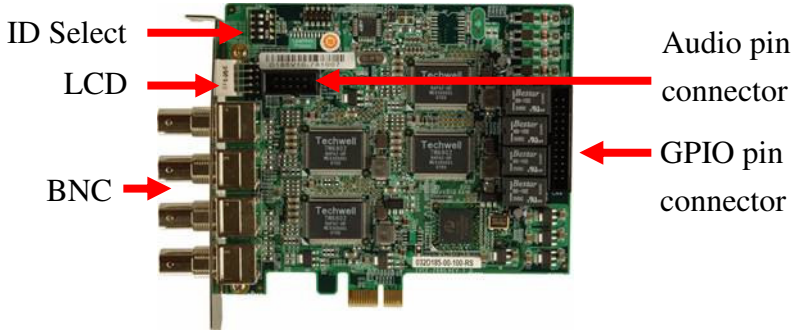
IVCE-268G-R10 : PCIe1 interface, 4 channel 120fps@D1 video & audio capture card, RoHS.

PM-6814-R10 : PCI-104 interface, 4 channel 30fps@D1 video and 1 channel audio capture card, RoHS.

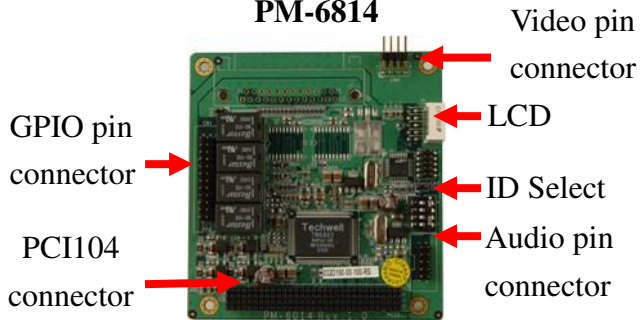
Hardware Connections & Settings Illustration for Video Capture Card



IVCE-268G



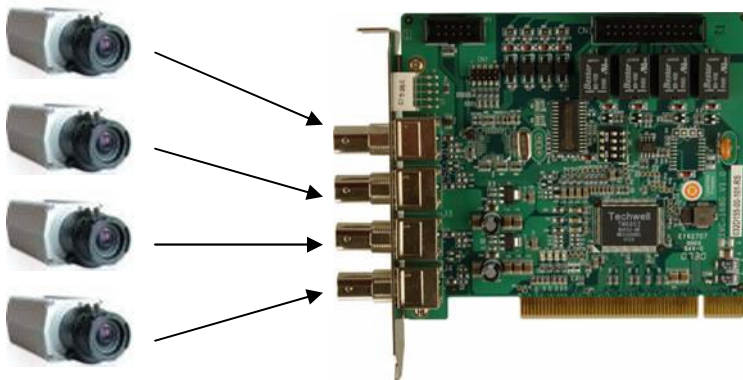
PM-6814



Connections to the Video Source

Connect your video source to the BNC connector of the BNC connector of the video capture card. Take IVC-168G for example.

Video source



ID Select Settings

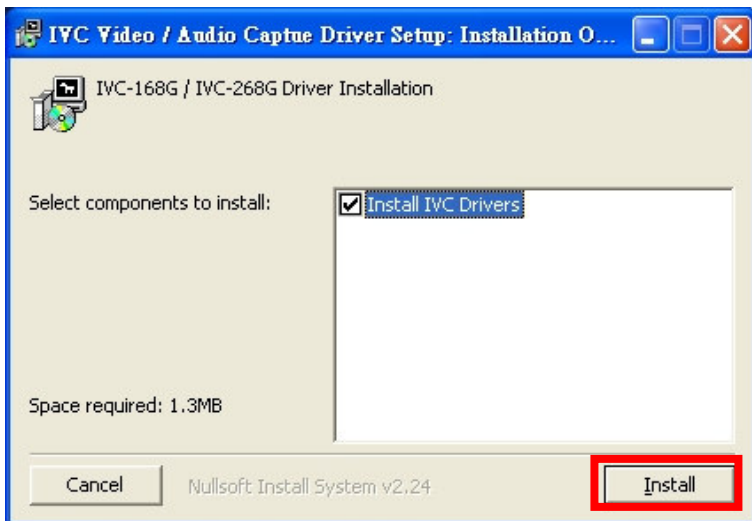
The ID select setting controls the card number on the LED.

ID	0	1	2	3	4	5	6	7
ON	NO	1	12	12	3	13	23	123
ID	8	9	A	B	C	D	E	F
ON	4	14	24	124	34	134	234	1234

Installation Procedures-Driver Installation

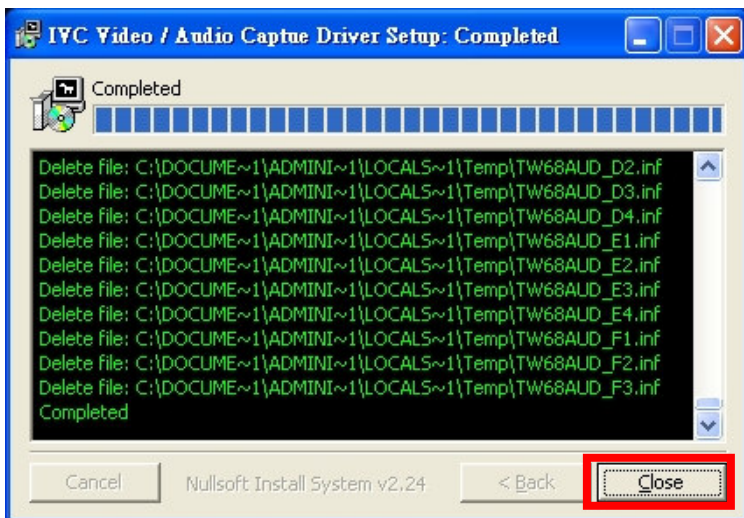
IEI driver installation program makes the driver installation of multiple cards an easy job. The steps of driver installation are described as below:

- 1 Adjust the jumper setting of the video capture card.
- 2 Insert the video capture card(s) into the computer system, and then turn on the computer.
- 3 The system will find a new device on the system and ask you to install the driver. Click Cancel to close the dialog box.
- 4 Run the program IVC_SETUP.exe from the IEI Installation CD.
- 5 Click the Install button for next step.



6 The window will show a message to warn you that the software does not contain a Microsoft digital signature. Click Yes to continue the installation.

7 After the driver has been successfully installed, click Close to finish Installation.

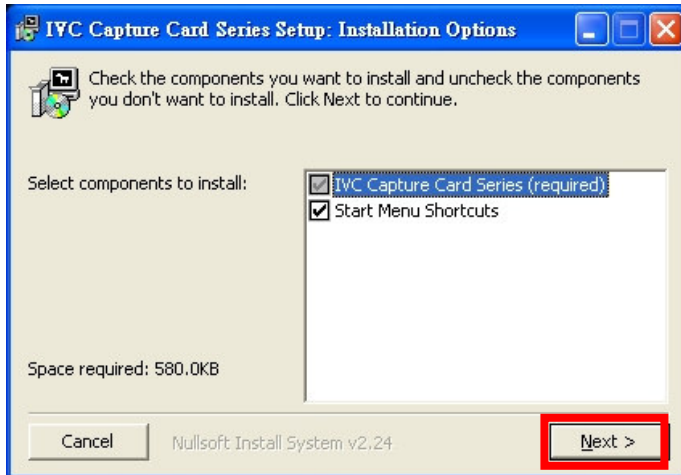


8 Restart your computer when you finish installing DirectX.

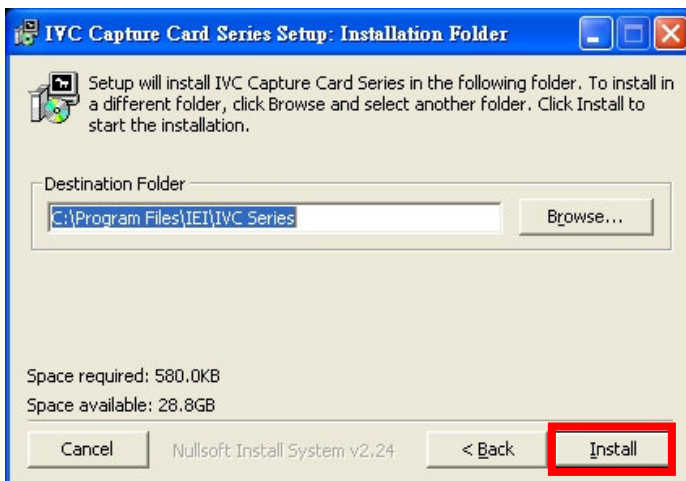
Installation of IVC Demo Program

Step 1: Install the IVC demo program. The executive file is in the path:
IVC_SERIES_CD\SDK\Sample program Installation\Install_IVCdemo.exe

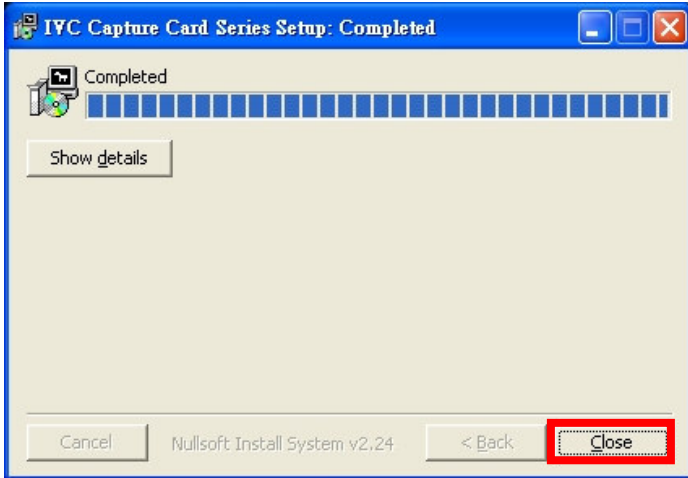
Step 2: Press the “Next” button to begin the installation.



Step 3: If you want to install in a different folder, click Browse and select another folder. Then press the “Install” button to start the installation.



Step 4: Finished the installation of IVC demo program.

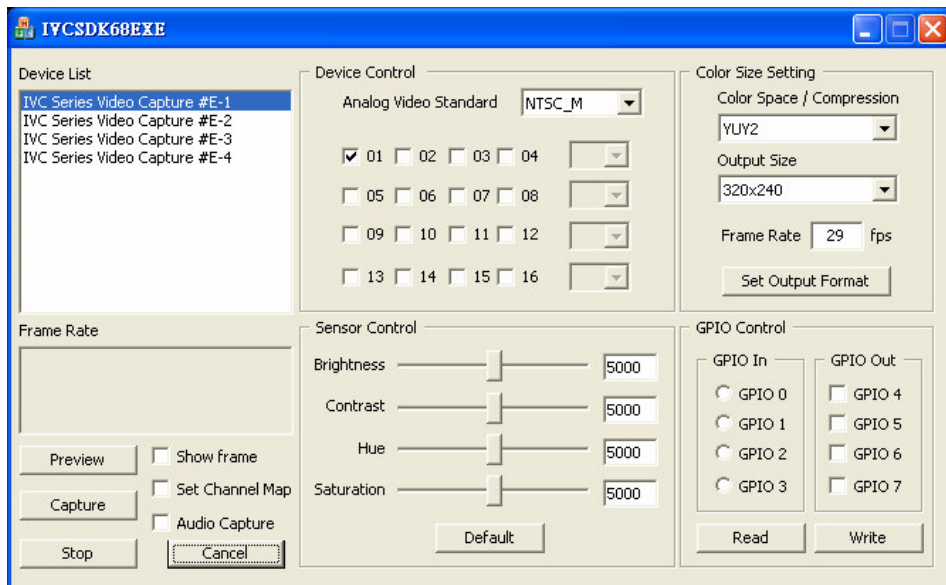


Step 5: There will be IVCSDK68EXE icon on the desktop. Click it to execute

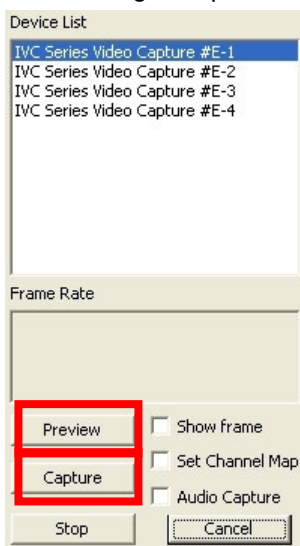


Video Image Preview for IVC

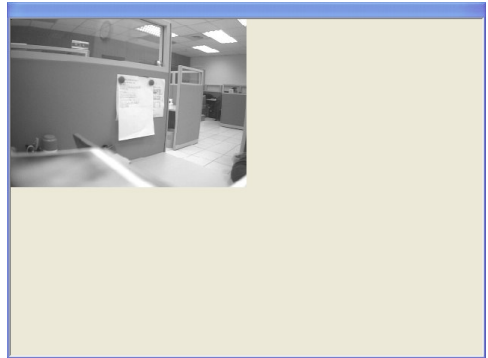
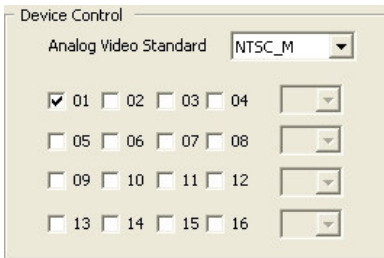
Step 1: Click IVCSKD68EXE to execute the demo program.



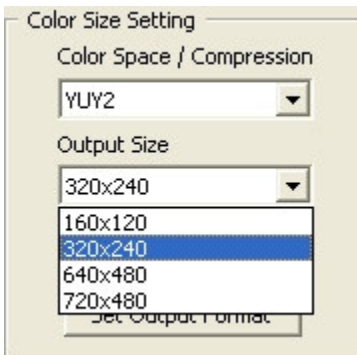
Step 2: Click Preview to preview video image, or click Capture to capture video image. Capture file will be saved at c:\.



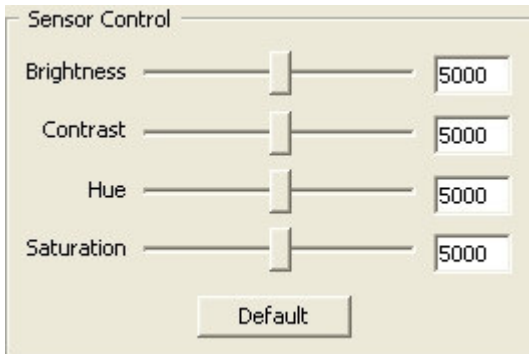
Step 3: At Device Control, user could click which number (video windows) will “Open” or “Close”. At Capture Mode, only the “selected window(s)” will be saved at c:\.



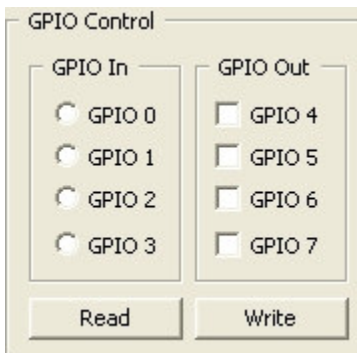
Step 4: Set the frame rate for video capturing or the video capturing resolution in Output Size.



Step 5: Set the brightness, contrast, hue and saturation of specific device in Sensor Control.



Step 6: In GPIO Control, click Read to get GPIO0~GPIO7 value. Click Write to control GPIO4~GPIO7.

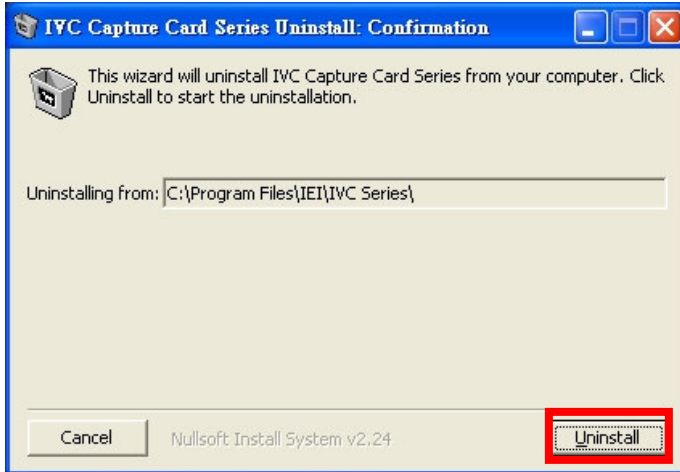


Uninstall the IVC demo program

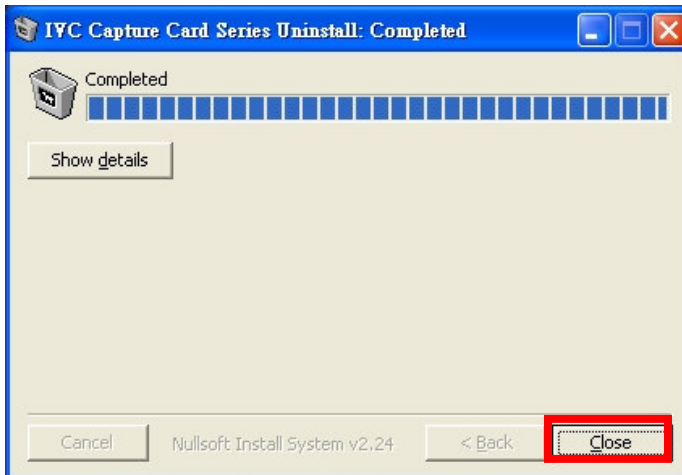
Step 1: Click Start, Programs→IEI→IVC Capture Card Series→

Uninstall_IVCSDK68EXE

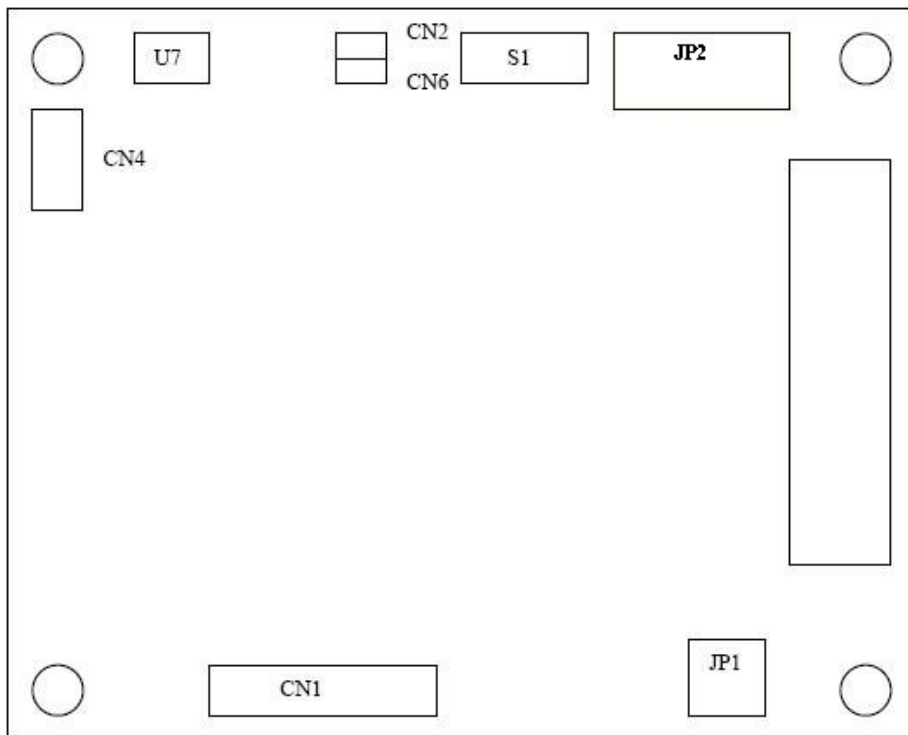
Step 2: Click Uninstall to start uninstall the demo program.



Step 3: After the demo program has been successfully uninstalled, click Close to finish.



PM-6814 Hardware Diagrams



PCI Signal Grouping Selection

INT、GNT、IDSEL、REQ、CLK Select : JP1

1-3,2-4	INTA、GNT0、IDSEL0、REQ0、CLK0
3-5,2-4	INTB、GNT1、IDSEL1、REQ1、CLK1
1-3,-4-6	INTC、GNT2、IDSEL2、REQ2、CLK2
3-5,4-6	INTD、GNT3、IDSEL3、REQ3、CLK3