

IVIEW Series
Quick Guide

Rev1.0
Feb, 2006

Contents

Chapter 1

Introduction P2

Chapter 2

Packing List P3

Chapter 3

Installation..... P7

Chapter 1

Introduction

1.1 About the Products

The LCD Desktop Touch monitor is an 8.4" / 12.1" TFT color display with the following features:

- VGA interface
- 167 million displayable colors
- Resolution 800 x 600
- Auto adjustment capability
- High quality full screen re-scaling
- Built in speakers
- Higgstec touch panel with 5 wire resistive type
- VESA wall mount standard

1.2 Specification

Display		
Model	IVIEW-1210	IVIEW-0840
LCD Size	12.1"	8.4"
Brightness	200 cd/m ²	180 cd/m ²
Resolution	800x600	800x600
Touch Screen	5 wire Resistive Type(IVIEW-0840T/IVIEW-1210T only)	
I/O Ports		
VGA	15pin D-SUB x1	
Serial	RS232 x 2 (For Touch Panel / MSR & I-Button Key)	
Audio	AC97, Internal 2W x2	
Others		
Power Supply	External Adapter 12VDC, 50W	
Compliance	CE / FCC Class B	
Weight	3 Kgs	1.5 Kgs
Dimension	370(W) x 277(L) x 355(H) mm	313(W) x 274(L) x 318(H) mm
Operating Temp	5°C to 40°C	

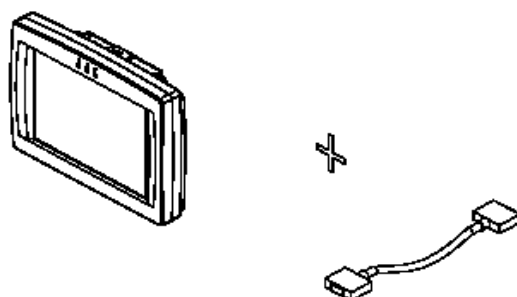
Chapter 2

Hardware Set up

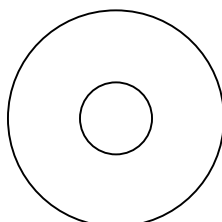
2.1 Unpacking the touch monitor

Check that the following 4 items are presented and in good conditions:

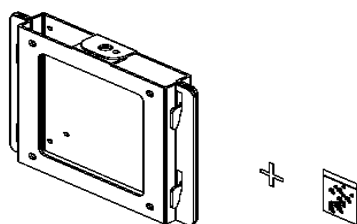
a. Main Unit + VGA or SCSI Cable



b. CD: Quick Guide & Driver Bank

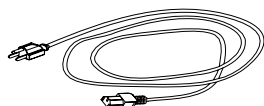
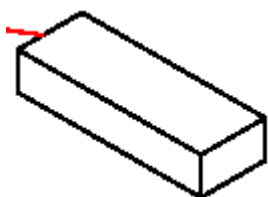


c. Wall Mount Kits: Bracket and Screws



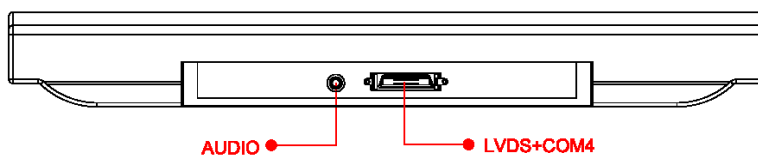
Quick Guide

d. Power Adapter (for VGA I/P type only) and Audio Cable



2.2 I/O view

- a. LVDS interface type (IVIEW-0840T-LVDS/IVIEW-1210T-LVDS only)
LVDS + COM4: The input SCSI connector was combined with LVDS (Low Voltage Differential Signal) display and Serial touch port.
The SCSI pin definition was specified to connect with IBOX-650



PIN	DESCRIPTION	PIN	DESCRIPTION
1	LCD 3.3V	19	FPBKLP
2	NRLSD4	20	TXOUT0-R
3	LCD3.3V	21	HDD LED
4	NRX4	22	TXOUT+R
5	LCD3.3V	23	LAN LED
6	NTX4	24	GND
7	5VDC	25	VCC3_SB
8	NDTR4	26	TXOUT1-R
9	5VDC	27	GND
10	NDSR4	28	TXOUT1+R
11	5VDC	29	GND
12	NRTS4	30	GND

Quick Guide

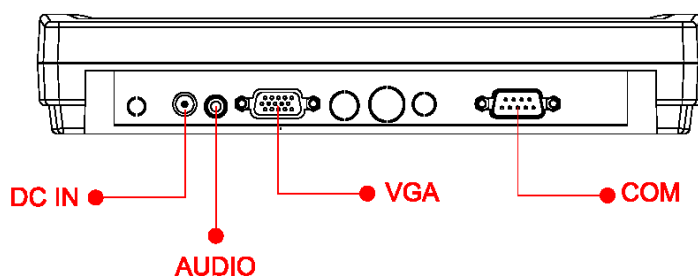
13	12VDC	31	TXCLK+R
14	NCTS4	32	TXOUT2-R
15	12VDC	33	TXCLK-R
16	NRI4D	34	TXOUT2+R
17	12VDC	35	GND
18	GND	36	GND

b. VGA interface type

The input VGA should be supported up to 800x600 resolution.

The COM port was connected to PC serial interface for touch screen.

Both VGA and COM is met to marketing standard.



VGA pin assignment

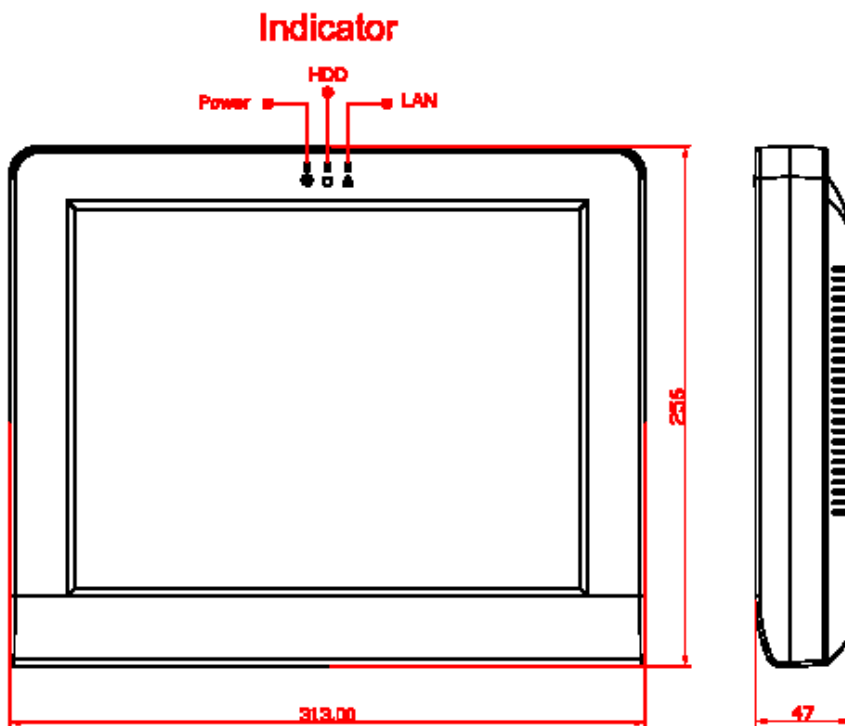
PIN	DESCRIPTION	PIN	DESCRIPTION
1	RED	9	GROUND
2	GREEN	10	GROUND
3	BLUE	11	NO USED
4	GROUND	12	NO USED
5	GROUND	13	HSYNC
6	GROUND	14	VSYSNC
7	GROUND	15	
8	NO USED		

Serial port pin assignment

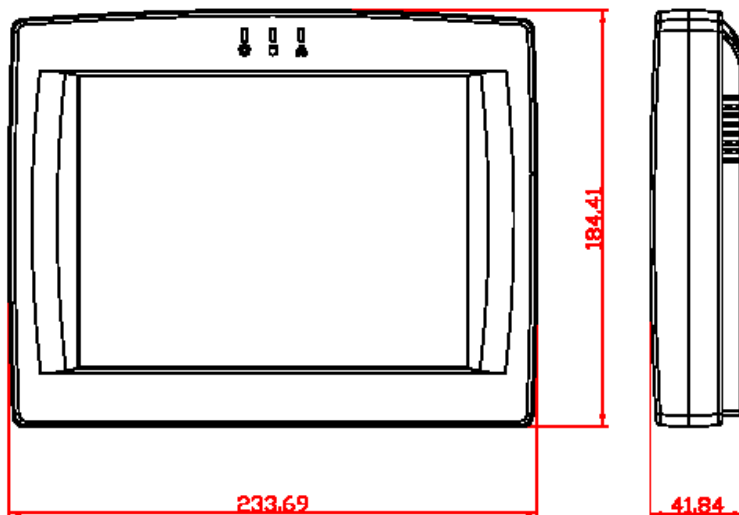
PIN	DESCRIPTION	PIN	DESCRIPTION
1	DATA CARRIER DETECT (DCD)	6	DATA SET READY (DSR)
2	RECEIVE DATA (RXD)	7	REQUEST TO SEND (RTS)
3	TRANSMIT DATA (TXD)	8	CLEAR TO SEND (CTS)
4	DATA TERMINAL READY (DTR)	9	RING INDICATOR (RI)
5	GROUND		

3.3 Dimension (in mm)

a. IVIEW-1210



b. IVIEW-0840



Chapter 3

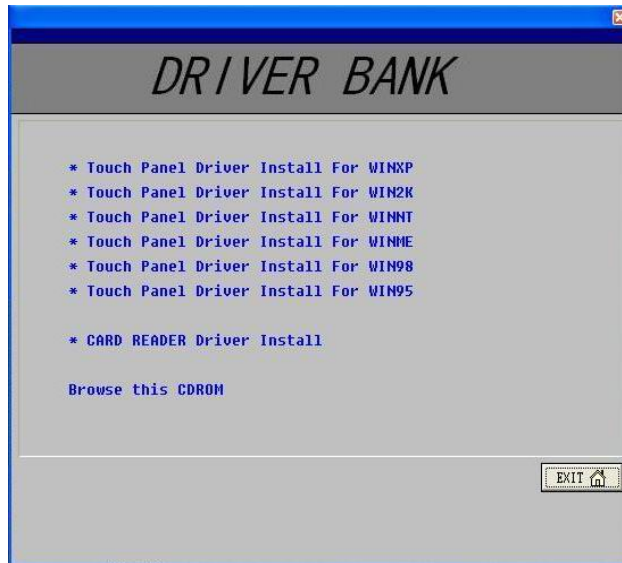
Installation

3.1 Installing touch driver

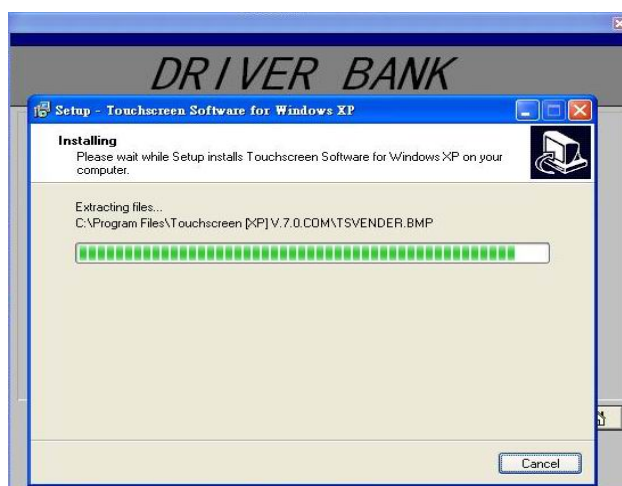
Touch driver include are located on the enclosed CD disc for the operating systems as WinXP/2000/NT/ME/98/Linux.

Quick Guide

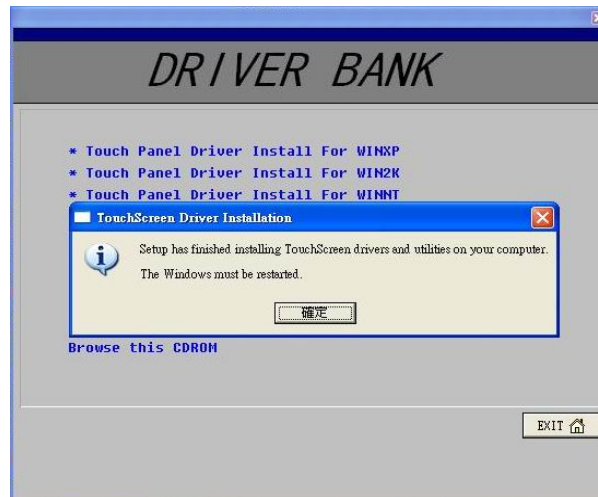
Be exemplated an installation procedure for Win XP as following step.



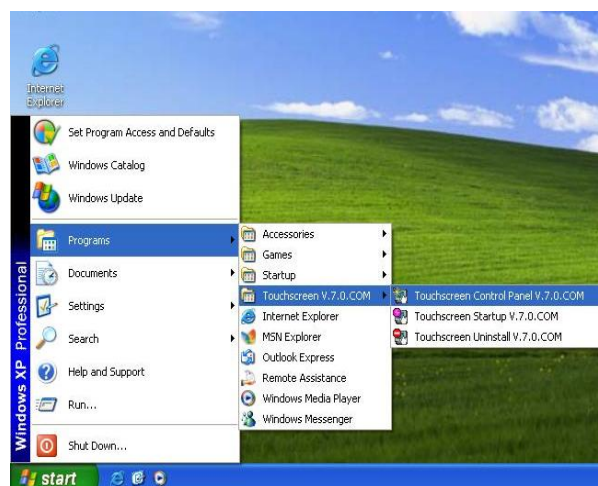
Quick Guide



Quick Guide



- b. After completed the driver installation, please make a calibration as following procedure.



Quick Guide

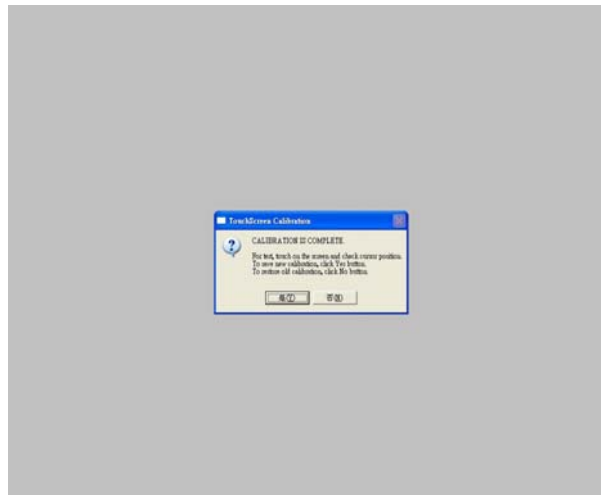


TouchScreen Calibration

Resolution: 1824 X 768

Please touch on the center of Cross Mark that show on the TOP of the screen.

Press ESC key to break calibration.



c. Finally set what parameter what your requirement as followings.



Quick Guide

