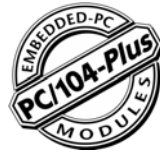
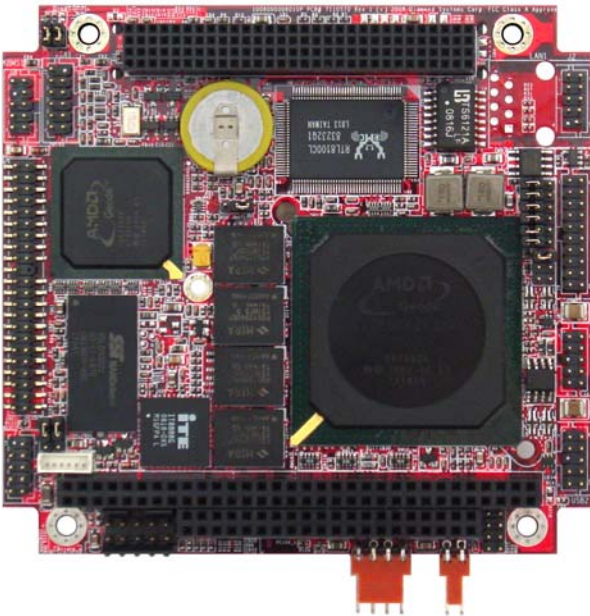


PEGASUS

On-board 2GB
Solid State Disk!



RUGGED, LOW-POWER 500MHz PC/104-Plus SINGLE BOARD COMPUTER



- ◆ Low power, mid-range PC/104-Plus expandable single board computer
- ◆ AMD Geode LX800 processor operating fan-less at 500MHz
- ◆ 256MB DDR DRAM soldered on board
- ◆ 2GB on-board IDE flashdisk
- ◆ Fully featured including support for:
 - Four USB 2.0 ports
 - One RS-232 serial port
 - One RS-232/422/485 serial port
 - 10/100Mbps Ethernet
 - IDE hard drive interface for one devices
 - Type II CompactFlash socket
 - VGA CRT and 1280 X 1024 LCD
- ◆ PC/104-Plus ISA + PCI stackthrough expansion
- ◆ -40°C to +85°C operating temperature

DESCRIPTION

Pegasus is a ruggedized single board computer offering mid-range computing power in a compact, low power consumption PC/104-Plus form factor. It is a superior choice for low power applications in harsh environments such as on the factory floor or in outdoor mobile applications.

Pegasus utilizes the AMD Geode LX800 processor operating fan-less at 500MHz. The LX800 has an integrated VGA controller with 2D hardware acceleration and support for high resolution CRT and LCD displays. In addition the Realtek RTL8100CL Ethernet controller provides 10/100Mbps network connectivity with wake-on-LAN capability supported in BIOS. 256MB of SDRAM system memory and 2GB IDE flashdisk are soldered on-board for improved reliability.

A full set of I/O ports is provided to support any application's requirements including Ethernet, UDMA-33 IDE, Type II CompactFlash, PS/2 keyboard and mouse, and 4 USB 2.0 ports. The SBC also has two 16450-compatible serial ports: one is RS-232 and the second is jumper selectable RS-232/422/485. The watchdog timer provides protection from software crashes and is programmable for delays between 1 and 255 seconds or minutes.

MASS STORAGE

Multiple mass storage devices can be used with Pegasus including:

- UDMA-33 IDE device
- 2GB on-board IDE flashdisk
- Type II CompactFlash socket

CABLE KIT

A cable kit is available that provides all of the cables necessary to bring the on-board I/O out from the pin headers to industry standard connectors.

CUSTOMIZATION FOR MORE RUGGIDIZATION

Pegasus can be customized as follows to meet your specific application needs. Minimum order quantities may apply.

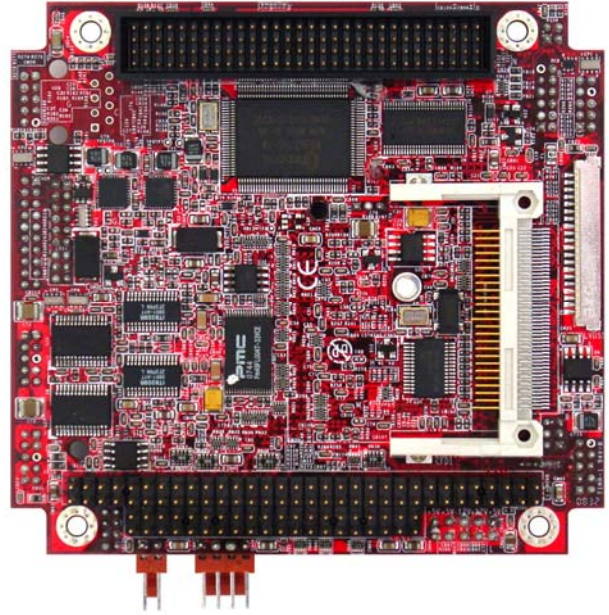
- Latching connectors for all I/O
- Conformal coating: Acrylic, Urethane, or Silicone
- Hardwired configurations to replace jumpers
- Battery-less boot
- Custom splash screen at boot-up

OPERATING SYSTEM SUPPORT

Pegasus supports Windows XP, Windows XPe, Windows CE, Linux, and DOS.

SPECIFICATIONS

Form Factor	PC/104-Plus
Processor	AMD Geode™ LX800 at 500MHz
Cache	64K L1 cache & 128K L2 cache
System Memory	256MB SDRAM on-board
VGA/ LCD Controller	AMD Geode LX series CPU integrated VGA controller with 2D engine (shared memory max, 64MB)
LCD	Supports 18/24-bit LVDS up to 1280 x 1024
Ethernet	Realtek 8100CL 10/100Mbps Ethernet
BIOS	Phoenix-Award BIOS
IDE Interface	1 x Ultra DMA 33, supports 1 IDE devices
Serial Ports	COM1: RS-232 COM2: RS-232/422/485
Keyboard / Mouse	Standard PS/2 Keyboard and Mouse
Universal Serial Bus	4 x USB 2.0 ports
Mass Storage	CompactFlash Type II socket 2GB on-board IDE flashdisk
Hardware Monitor	Integrated in W83627HG
Real-Time Clock	AMD Geode CS5536 built-in RTC with lithium battery
Watchdog Timer	1 - 255 Levels (Sec. or Min.)
Expansion Bus	PC/104-Plus (ISA + PCI) stackthrough
Power Input	+5V +/-5% @ 1.0A typical
Power Consumption	5W typical
Operating Temp.	-40°C to +85°C
Dimension (W X H)	4.050" x 3.775"
Weight	4.5 oz / 127g



Bottom view of Pegasus SBC showing CompactFlash socket

ORDERING INFORMATION

Part Number	Description
PGS800-256-2G	Pegasus SBC, 500MHz LX800, 256MB RAM, 2GB on-board IDE flashdisk
C-PGS-KIT	Pegasus Cable Kit

FOR MORE INFORMATION

Diamond Systems Corporation
 1255 Terra Bella Avenue
 Mountain View, CA 94043
 Tel: 650-810-2500
 Fax: 650-810-2525
techinfo@diamondsystems.com