

**PER-V05V**

Volar Z9s Graphic Chipset  
One VGA Output  
Up to 1600 x 1200 @ 85Hz  
Mini PCI Video Module

## Copyright Notice

This document is copyrighted, 2008. All rights are reserved. The original manufacturer reserves the right to make improvements to the products described in this manual at any time without notice.

No part of this manual may be reproduced, copied, translated, or transmitted in any form or by any means without the prior written permission of the original manufacturer. Information provided in this manual is intended to be accurate and reliable. However, the original manufacturer assumes no responsibility for its use, or for any infringements upon the rights of third parties that may result from its use.

The material in this document is for product information only and is subject to change without notice. While reasonable efforts have been made in the preparation of this document to assure its accuracy, AAEON assumes no liabilities resulting from errors or omissions in this document, or from the use of the information contained herein.

AAEON reserves the right to make changes in the product design without notice to its users.

## Safety Precautions

### **Warning!**



*Always completely disconnect the power cord from your board whenever you are working on it. Do not make connections while the power is on, because a sudden rush of power can damage sensitive electronic components.*

### **Caution!**



*Always ground yourself to remove any static charge before touching the board. Modern electronic devices are very sensitive to static electric charges. Use a grounding wrist strap at all times. Place all electronic components on a static-dissipative surface or in a static-shielded bag when they are not in the chassis.*

## Packing List

Before you begin installing your card, please make sure that the following materials have been shipped:

- 1 D-sub Cable
- 1 Utility CD
- 1 PER-V05V

If any of these items should be missing or damaged, please contact your distributor or sales representative immediately.

## Below Table for China RoHS Requirements

产品中有毒有害物质或元素名称及含量

## AAEON Main Board/ Daughter Board/ Backplane

部件名称	有毒有害物质或元素					
	铅 (Pb)	汞 (Hg)	镉 (Cd)	六价铬 (Cr(VI))	多溴联苯 (PBB)	多溴二苯醚 (PBDE)
印刷电路板 及其电子组件	×	○	○	○	○	○
外部信号 连接器及线材	×	○	○	○	○	○

**O:** 表示该有毒有害物质在该部件所有均质材料中的含量均在  
SJ/T 11363-2006 标准规定的限量要求以下。

**X:** 表示该有毒有害物质至少在该部件的某一均质材料中的含量超出  
SJ/T 11363-2006 标准规定的限量要求。

备注：此产品所标示之环保使用期限，系指在一般正常使用状况下。

# Contents

## Chapter 1 General Information

1.1 Introduction.....	1-2
1.2 Features .....	1-2
1.3 Mechanical Drawings .....	1-3

## Chapter 2 Quick Installation Guide

2.1 Autorun Utility .....	2-2
2.2 VGA Setup .....	2-4

Chapter

1

**General  
Information**

This software package consists of VGA drivers and setup tools for Windows 2000/XP/Server 2003.

The VGA setup tool is capable of installing and uninstalling VGA drivers.

## 1.1 Features

---

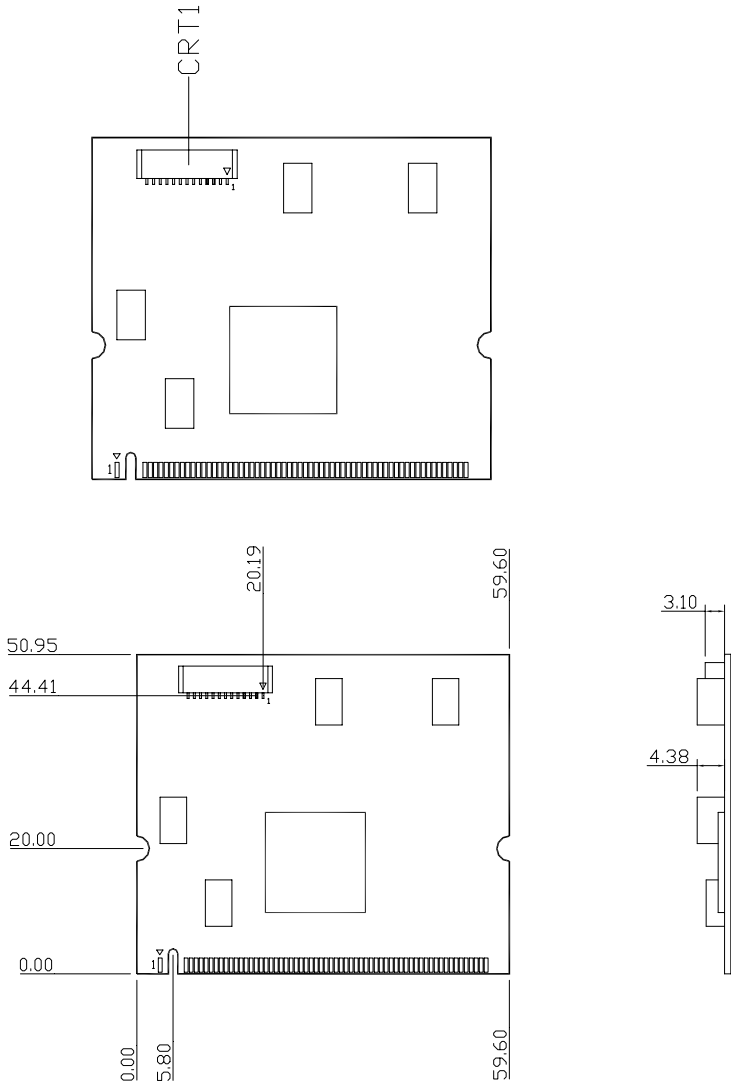
- Mini PCI Type III Interface
- One VGA output, Resolution Up to 1600 x 1200 @ 85Hz
- Memory Size 32M DDRII

## 1.2 Specifications

---

- Form Factor: Mini PCI Type III A  
(50.8mm x 59.6mm)
- Chipset: Volari Z9s (100MHz)
- Display: CRT output
- Resolution: Up to 1600 x 1200 @ 85Hz
- Power Requirement: +3.3V
- Operating Temperature: 32°F~140°F (0°C~60°C)

### 1.3 Mechanical Drawings



Chapter

2

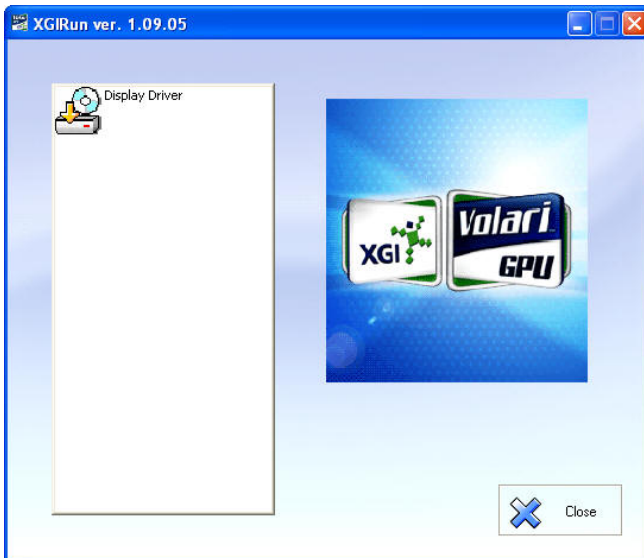
**AutoRun  
Utility**

## 2.1 Autorun Utility

---

Autorun utility will pop up a menu after the VGA driver package CD is inserted. Then, user can install each driver and software module one by one by selecting its corresponding item on that menu.

**Figure 1 VGA Driver setup items**



### User Interface Description

- **Volari Z9:** Click on this item to pull down a driver installation sub-menu.
  - **Display Driver:** Click on this item to install display driver

**Function Description**

- Install the Volari Display Driver package

**Environment**

- Software environment
  1. Microsoft Windows 2000/XP/Server 2003 or later.
- Hardware environment
  1. CPU Pentium III (or above), or AMD Athlon (or above).
  2. VGA monitor.
  3. XGI Volari Z9 VGA card.

## 2.2 VGA Setup

---

The purpose of "VGA Setup: XGI User's Guide" is to describe the architecture, environment, function and user interface of the VGA setup program.

### System Introduction

The installation utility now is developed with InstallShield DevStudio 9.0, which is the industry standard for software distribution. It provides more functions and powerful dialogs, and is easy to use. Particularly, it supports about 28 languages without having to translate the complex installation messages and resources.

### System Description

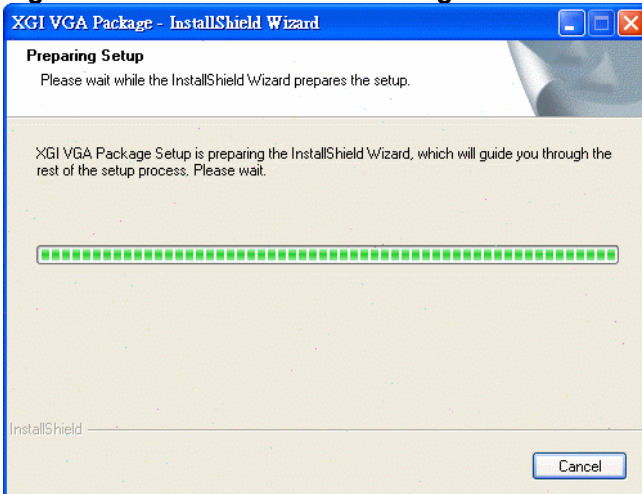
InstallShield DevStudio 9.0 dynamically checks the language of the end user's system. So there are two parts of installation: the first script detects the system language, and then the second script performs the rest of the installation with the appropriate localized resources.

Distributors can modify setup.ini for customized brand sake.

## User Interface: Installation

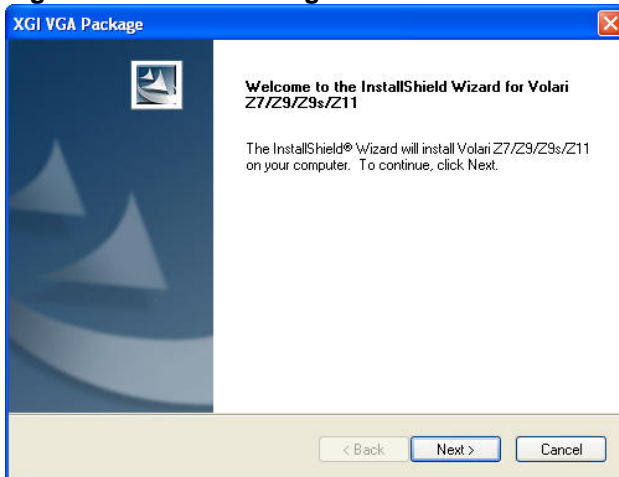
From AutoRun utility, select the "Display Driver" item, you will see a dialog box as in figure 1.

**Figure 1 InstallShield Wizard dialog box**



In the "XGI VGA Package" window, click on "**Next**" to install the display driver.

Figure 2 Welcome dialog box



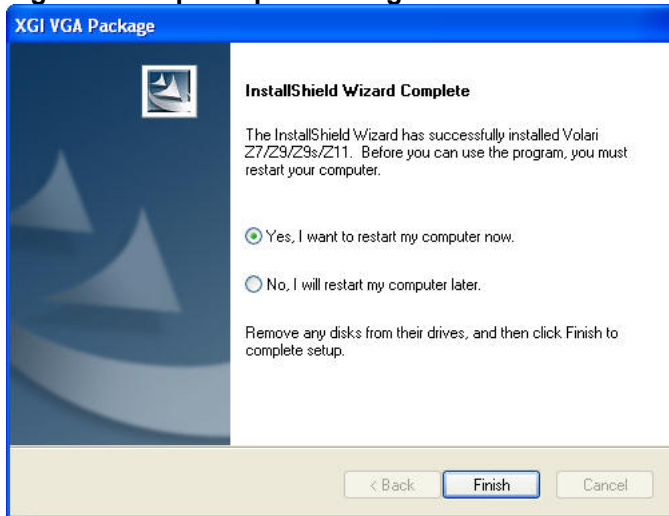
During the installation, the progress indicator shows user how much of installation is complete.

Figure 3 Copying files dialog box



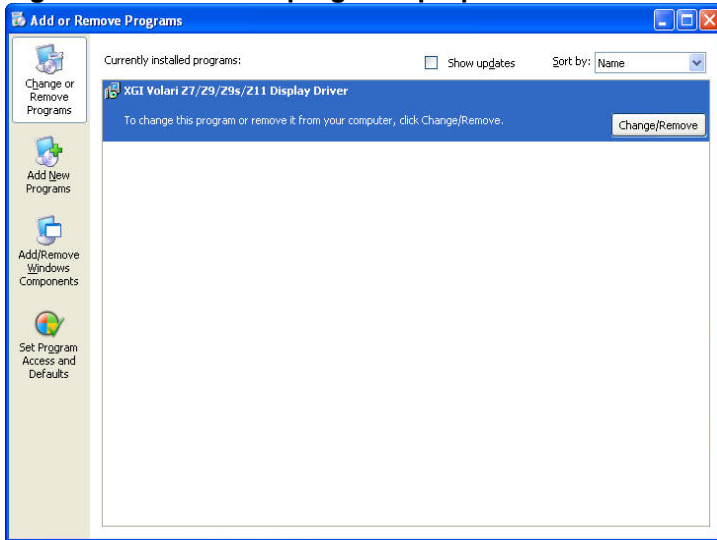
At the end of installation, Fig. 4 shows a dialog box offering the user the chance to restart the computer, or to do neither. After rebooting the computer, the installation has successfully finished.

**Figure 4 Setup complete dialog box**



## User Interface: Uninstallation

The uninstallation process begins when the user clicks the "Add/Remove Programs" from the "Control Panel". User can choose the XG20 package folder from the list box and then click on the "Add/Remove" button.

**Figure 5 Add/Remove programs properties sheet**

### Function Description

- **One step install**

We use an install method whereby the drivers are installed with one command (setup.exe), similar to the procedure used by InstallShield. In order to reduce maintenance efforts and risk, driver information file calling SETUPX.DLL during one step installation triggers INF. Additionally, most registry setting are made from triggering INF for drivers. That is as same as using INF to install drivers.

- **Silent install**

XGI installation method supports silent mode. A silent mode installation is one in which the user must only invoke the installation command, along with any necessary parameters (i.e. setup -s), to completely install the software component. No further user intervention is permitted. This behavior is consistent with the procedure used by Install Shield.

- **Support multiple languages**

Languages supported of InstallShield DevStudio 9.0 are listed in the following: Chinese Traditional, Chinese Simplified, Japanese, Korean, Thai, English, French, Italian, German, Spanish, Danish, Norwegian, Swedish, Portuguese , Brazilian Portuguese , Dutch, Russian, Finnish. There are 18 languages in total.

### **System Characteristics**

The characteristics and features are as follows:

- Installation.
- Uninstallation.
- International languages support.
- Customized brand.

**Operation Environment**

- Software environment
  1. Microsoft Windows 2000/ XP/ Server 2003/ Linux 6.0 or later.
- Hardware environment
  1. CPU Pentium III (or above), or AMD Athlon Processor (or above)
  2. VGA monitor.
  3. XGI Volari Z9 VGA display adapter.
  4. Keyboard and mouse.