

# **PCM-4896L**

All-in-One NS Geode GX1 Single  
Board computer with LCD,  
Ethernet, Audio, & 4 COMs

## FCC STATEMENT

THIS DEVICE COMPLIES WITH PART 15 FCC RULES. OPERATION IS SUBJECT TO THE FOLLOWING TWO CONDITIONS: (1) THIS DEVICE MAY NOT CAUSE HARMFUL INTERFERENCE. (2) THIS DEVICE MUST ACCEPT ANY INTERFERENCE RECEIVED INCLUDING INTERFERENCE THAT MAY CAUSE UNDESIRE OPERATION.

THIS EQUIPMENT HAS BEEN TESTED AND FOUND TO COMPLY WITH THE LIMITS FOR A CLASS "A" DIGITAL DEVICE, PURSUANT TO PART 15 OF THE FCC RULES. THESE LIMITS ARE DESIGNED TO PROVIDE REASONABLE PROTECTION AGAINST HARMFUL INTERFERENCE WHEN THE EQUIPMENT IS OPERATED IN A COMMERCIAL ENVIRONMENT. THIS EQUIPMENT GENERATES, USES, AND CAN RADIATE RADIO FREQUENCY ENERGY AND, IF NOT INSTALLED AND USED IN ACCORDANCE WITH THE INSTRUCTION MANUAL, MAY CAUSE HARMFUL INTERFERENCE TO RADIO COMMUNICATIONS. OPERATION OF THIS EQUIPMENT IN A RESIDENTIAL AREA IS LIKELY TO CAUSE HARMFUL INTERFERENCE IN WHICH CASE THE USER WILL BE REQUIRED TO CORRECT THE INTERFERENCE AT HIS OWN EXPENSE.

## Copyright Notice

This document is copyrighted, 1999. All rights are reserved. The original manufacturer reserves the right to make improvements to the products described in this manual at any time without notice.

No part of this manual may be reproduced, copied, translated, or transmitted in any form or by any means without the prior written permission of the original manufacturer. Information provided in this manual is intended to be accurate and reliable. However, the original manufacturer assumes no responsibility for its use, nor for any infringements upon the rights of third parties which may result from its use.

## Acknowledgements

AMD is a trademark of Advanced Micro Devices, Inc.

AMI is a trademark of American Megatrends, Inc.

Award is a trademark of Award Software International, Inc.

Cyrix is a trademark of Cyrix Corporation.

IBM, PC/AT, PS/2, and VGA are trademarks of International Business Machines Corporation.

Intel and Pentium II are trademarks of Intel Corporation.

Microsoft Windows® is a registered trademark of Microsoft Corp.

SMC is a trademark of Standard Microsystems Corporation.

RTL is a trademark of Realtek Semi-Conductor Co., Ltd.

C&T is a trademark of Chips and Technologies, Inc.

UMC is a trademark of United Microelectronics Corporation.

ITE is a trademark of Integrated Technology Express, Inc.

SiS is a trademark of Silicon Integrated Systems Corp.

VIA is a trademark of VIA Technology, Inc.

All other product names or trademarks are properties of their respective owners.

# **A Message to the Customer**

---

## **AAEON Customer Services**

Each and every AAEON's product is built to meet your exact needs and specifications to ensure excellent performance in the harsh and demanding conditions which is typical of the industrial environments. Whether the new AAEON equipment is designed for the laboratory or the factory floor, you can be assured that the product will provide the reliability and ease of operation for which the name AAEON has come to be known.

Your satisfaction is our primary concern, and here is a guide of the services for AAEON's customers. To get the full benefit of our services, please follow the instructions below carefully.

## **Technical Support**

---

We hope you can get the outstanding performance from our products. So if you run into technical difficulties, we are here to help. For the most frequently asked questions, you can easily find answers in your product documentation. These answers are normally much more detailed than the ones we can provide over the phone.

So please consult this manual first. If you still cannot find the answer, gather all the information or questions that apply to your problem, and with the product close at hand, call your dealer. Our dealers are well trained and ready to give you the support you need to get the most from your AAEON products. In fact, most problems reported are minor and could be easily solved over the phone.

In addition, professional technical support is available from AAEON's engineers every business day. We are always ready to give advice on application requirements or specific information on the installation and operation of any of our products.

# Product Warranty

---

AAEON warrants to you, the original purchaser, that each of its products will be free from defects in materials and workmanship for two years from the date of purchase.

This warranty does not apply to any products which have been repaired or modified by unauthorized personnel, or those products which have been misused, abused, installed improperly and altered accidentally. AAEON assumes no liability under the terms of this warranty as a consequence of such events.

Because of AAEON's high quality-control standards and rigorous testing, most of our customers never need to use our repair service. If an AAEON's product is defective, it will be repaired or replaced with no charge during the warranty period. For out-of-warranty repairs, you will be billed according to the cost of replacement materials, service time, and freight. Please consult your dealer for more details.

If you think you have received a defective product, follow these steps:

1. Collect all the information about the problem encountered. (For example, CPU type and speed, AAEON products used, other hardware and software used, etc.) Note anything abnormal and list any on-screen messages you get when the problem occurs.
2. Please prepare your manual, product, and other helpful information before calling your dealer to describe your problem.
3. If your product is diagnosed as defective, please manage to obtain an RMA (return material authorization) number from your dealer. This allows us to deal with your return quickly.
4. Carefully pack the defective product, a fully-completed Repair and Replacement Order Card, and a photocopy proof of purchase date (such as your sales receipt) in a shippable container. A product returned without the proof of the purchase date is not eligible for warranty service.
5. Write the RMA number visibly on the outside of the package and ship it out after paying to your dealer for it.

## Packing list

---

Before you begin installing your card, please make sure that the following materials have been shipped:

- 1 PCM-4896L All-in-One Single Board Computer
- 1 Quick Installation Guide
- 1 CD-ROM contains the followings:
  - User's Manual (this manual in PDF file)
  - Ethernet drivers and utilities
  - VGA drivers and utilities
  - Audio drivers and utilities
  - Latest BIOS (as of the CD-ROM was made)

The PCM-4896L require several cables for operation. You can make them yourself or purchase an optional cable kit, PCM-10489-5.

If any of these items are missing or damaged, contact your distributor or sales representative immediately

## Notice

---

Dear Customer,

Thank you for purchasing the PCM-4896L board. This user's manual is designed to help you to get the most out of the PCM-4896, please read it thoroughly before you install and use the board. The product that you have purchased comes with an two-year limited warranty, but AAEON will not be responsible for misuse of the product. Therefore, we strongly urge you to first read the manual before using the product.

To receive the latest version of the user manual, please visit our Web site at:

**<http://www.aaeon.com.tw>**

# Contents

<b>Chapter 1: General Information .....</b>	<b>1</b>
Introduction.....	2
Features.....	3
Specifications.....	4
Board layout.....	7
Board dimensions.....	8
<b>Chapter 2: Installation .....</b>	<b>9</b>
Jumpers and connectors.....	10
Locating jumpers.....	12
Locating connectors.....	13
Setting jumpers.....	14
CPU installing and upgrading.....	15
Installing DRAM (DIMMs).....	16
Internal buzzer select (J1).....	17
Clear CMOS (J4).....	17
ATX Soft-Power Switch connector (J5).....	17
Audio output select (J6).....	18
CD audio connector (J7).....	18
LCD driving voltage select (J8).....	19
LCD clock signal select (J9).....	19
COM3/COM4 RI pin voltage select (J12, J11).....	20
COM2 RS-232/422/485 select (J13, J14).....	21
SW1 (1~3) Cpu frequency ratio.....	22
SW2 (1) CPU clock select.....	22
GX1 CPU jumper setting examples.....	23
DOC address select SW1 (5, 6).....	24
Power connectors (PW1, J3).....	25
ATX power connector (PW1).....	25
CPU fan power connector (J3).....	25
USB connector (CN2).....	26

<b>IDE hard drive connector (CN4)</b> .....	<b>27</b>
Connecting the hard drive.....	27
IDE hard drive connector (CN4).....	28
<b>Front Panel connector (CN5)</b> .....	<b>29</b>
<b>IrDA connector (CN6)</b> .....	<b>30</b>
<b>Display connectors (CN7, CN9)</b> .....	<b>31</b>
VGA display connector (CN9).....	31
LCD connector (CN7).....	32
<b>Keyboard and mouse connector (CN8)</b> .....	<b>33</b>
<b>Audio connector (CN10)</b> .....	<b>34</b>
<b>Parallel port connector (CN11)</b> .....	<b>35</b>
Parallel port IRQ.....	35
Parallel port connector table (CN1 1).....	35
<b>100Base-Tx Ethernet connector (CN12)</b> .....	<b>36</b>
<b>Digital I/O connector (CN15)</b> .....	<b>36</b>
<b>Serial ports (CN13)</b> .....	<b>37</b>
COM 1-4 RS-232/422/485 serial ports (CN13).....	37
<b>Floppy drive connector (CN14)</b> .....	<b>38</b>
Connecting the floppy drive.....	38
Floppy drive connector (CN14).....	39
<b>Ethernet LED signal connectors (LED1)</b> .....	<b>40</b>
<b>DiskOnChip socket (U4)</b> .....	<b>41</b>
<b>DiskOnChip (DOC) 2000 Installation</b> .....	<b>42</b>

### **Chapter 3: Award BIOS Setup ..... 43**

<b>Starting setup</b> .....	<b>44</b>
<b>Setup keys</b> .....	<b>45</b>
<b>Getting help</b> .....	<b>46</b>
In case of problem.....	46
<b>Main setup menu</b> .....	<b>47</b>
<b>Standard CMOS setup</b> .....	<b>49</b>
<b>BIOS features setup</b> .....	<b>56</b>

<b>CHIPSET features setup.....</b>	<b>61</b>
<b>Power management setup.....</b>	<b>63</b>
<b>PNP/PCI configuration setup.....</b>	<b>66</b>
<b>Load BIOS defaults/Load setup defaults.....</b>	<b>68</b>
<b>Integrated peripherals setup.....</b>	<b>69</b>
<b>Supervisor/User password setting .....</b>	<b>72</b>
<b>IDE HDD auto detection.....</b>	<b>74</b>
<b>Save &amp; exit setup.....</b>	<b>75</b>
<b>Exit without saving.....</b>	<b>76</b>

**Chapter 4: Flat Panel/CRT controller Display Drivers and Utilities ..... 77**

<b>Software drives.....</b>	<b>78</b>
Hardware configuration.....	78
Necessary prerequisites.....	79
Before you begin.....	79
<b>Windows 95/98.....</b>	<b>80</b>
Driver installation.....	80
<b>Windows NT 4.0.....</b>	<b>86</b>
Driver installation.....	86

**Chapter 5: Ethernet Software configuration ..... 87**

<b>Win9X/NT Ethernet Installation.....</b>	<b>88</b>
<b>Ethernet Software Configuration.....</b>	<b>89</b>

**Chapter 6: Audio setup ..... 91**

<b>Introduction.....</b>	<b>92</b>
<b>Setting up in windows 95/98.....</b>	<b>92</b>
Installing the drivers under Window 95/98.....	93

<b>Appendix A: Programming the Watchdog Timer .....</b>	<b>101</b>
<b>Programming the watchdog timer .....</b>	<b>102</b>
How to program the WATCHDOG TIMER.....	102
Demo program.....	103
<b>Appendix B: Installing PC/104 Modules.....</b>	<b>105</b>
<b>Installing PC/104 modules.....</b>	<b>106</b>
<b>Appendix C: Optional Extras .....</b>	<b>109</b>
<b>PCM-10489-5 Wiring Kit.....</b>	<b>110</b>
<b>Optional USB Cable .....</b>	<b>111</b>



## **General Information**

This chapter gives background information on the mainboard.

Sections include:

- Board specifications
- Layout and dimensions

# Introduction

---

The PCM-4896L is an all-in-one multi-media NS Geode GX1 MMX processor based single board computer (SBC) with an integrated audio controller, a PCI Flat Panel controller a PCI 100Base-Tx Ethernet interface, and one PCI expansion slot. With true Pentium MMX capability, the PCM-4896L achieves outstanding performance that surpasses other SBC in its class. In addition, the onboard SSD interface supports M-systems DiskOnChip 2000 series, memory capacity from 2 MB to 288 MB. This compact (only 5.75" x 8") unit offers all the functions of a single board industrial computer , but still fits in the space of a CD-ROM drive.

On-board features include four serial ports (three RS-232, one RS-232/422/485), one multi-mode parallel (ECP/EPP/SPP) port, connector for two USB (Universal Serial Bus) ports, a floppy drive controller, and a keyboard/PS/2 mouse interface. The built-in high speed PCI IDE controller supports Ultra DMA/33 mode. Up to two IDE devices can be connected, including large hard disks, CD-ROM drives, and tape backup drives, etc.

The PCM-4896L also features power management to minimize power consumption. It complies with the APM standard and supports three types of power saving features: Doze mode, Standby mode, and Suspend mode. In addition, the board's watchdog timer can be programmed to reset the system or generate an interrupt in case the system stops due to a program bug or EMI.

## Highly integrated multi-media SBC

The PCM-4896L is a highly integrated multi-media SBC that combines audio, video, and network functions on a CD-ROM drive size single computer board. It provides, 16-bit full-duplex, integrated 3D audio and up to 1024 x 768 resolution @ 24bpp with UMA up to 4MB display memory. Major onboard devices adopt PCI technology to achieve outstanding computing performance.

## Features

---

- Supports NS Geode GX1 BGA CPU up to 300 MHz
- Support Disk On Chip up to 288MB
- NS CS5530A LCD controller support 18-bit TFT panels
- 100Base-Tx Ethernet interface, supports Remote Boot ROM function.
- AC-97 2.0 audio interface, Sound Blaster compatible
- Supports Bus Master and Ultra DMA/33 IDE devices
- Three RS-232 and one RS-232/422/485 serial ports
- USB interface, PCI slot, and PC/104 connector for flexible expansion capabilities

# Specifications

---

## Standard SBC Functions

- **CPU:** NS Geode GX1 BGA CPU up to 300MHz
- **BIOS:** Award 256KB Flash BIOS
- **Chipset:** NS CS5530A
- **I/O Chipset:** NS97317/ITE IT8661F Fully 16-bit I/O decoded
- **Cache:** Processor build-in 16KB Level-1 write-back cache
- **Memory:** Onboard one 168-pin DIMM socket supports up to 256Mbytes SDRAM
- **Enhanced IDE:** Support up to two IDE devices. Supports Ultra DMA/33 mode with data transfer rate up to 33MB/sec.
- **FDD interface:** Supports up to two floppy disk drives, 5.25" (360KB and 1.2MB) and /or 3.5" (720KB, 1.44MB, and 2.88MB)
- **Parallel port:** One bi-directional parallel port. Supports SPPECP and EPP modes
- **Serial ports:** Three RS-232 and one RS-232/422/485 serial ports. Ports can be configured as COM1, COM2, COM3, COM4, or disabled individually(16C550 equivalent)
- **IR interface:** Supports one IrDA Tx/Rx header
- **Keyboard/mouse connector:** 8 pin connector supports PC/AT keyboard and PS/2 mouse
- **USB connectors:** 4 x 2 header onboard supports dual USB ports
- **Battery:** Lithium battery for data retention of up to 10 years
- **Watchdog Timer:** Can generate a system reset. Support software selectable timeout interval.
- **DMA:** 7 DMA channels (8237 equivalent)
- **Interrupt:** 15 interrupt levels (8259 equivalent)

- **Power management:** Supports ATX power supply. Supports PC97, and modem ring-in functions. I/O peripheral devices support power saving and doze/standby/suspend modes.

### **Flat Panel/CRT Interface**

- **Chipset:** NS CS5530A
- **Display memory:** UMA share memory upto 4MB
- **Display type:** Supports non-interlaced CRT and LCD 18-bit TFT/displays. Can display both CRT and Flat Panel simultaneously
- **Resolution:** Up to 1280x1024 85Hz for CRT  
Up to 800x600 for Flat Panel.

### **Sound Interface**

- **Chipset:** NS CS5530A
- **3D audio:** Supports for Microsoft DirectSound and DirectSound 3D audio technology in two-speaker mode (requires Microsoft Direct Sound 3D supported software titles)
- **16-bit stereo digital audio:** Full-duplex support enables simultaneous-record and playback for Internet communications software

### **Ethernet interface**

- **Chipset:** Reltek RTL8139C 100Base-Tx Fast Ethernet controller
- **Ethernet interface:** 100Base-Tx RJ-45 connector Optional Remote Boot ROM function

## **SSD Interface**

One 32-pin DIP socket supports M-systems DiskOnChip up to 288 MB

## **Expansion Slots**

- **PC/104 connector:** One 16-bit 104-pin connector onboard
- **PCI slot:** One 32-bit PCI slot onboard

## **Mechanical and environmental**

- **Power supply voltage:** +5V (4.75V to 5.25V),  
+12V (11.4V to 12.6V)
- **Typical power requirement:** +5V@3A
- **Operating temperature:** 32 to 140°F (0 to 60°C)
- **Board size:** 8"(L) x 5.75"(W) (203mm x 146mm)
- **Weight:** 1.2 lb. (0.5 Kg)





## Installation

This chapter describes how to set up the main board hardware, including instructions on setting jumpers and connecting peripherals, switches, and indicators. Be sure to read all the safety precautions before you begin the installation procedure.

## Jumpers and Connectors

---

Connectors on the board link themselves to the external devices such as hard disk drives, a keyboard, or floppy drives. In addition, the board has a number of jumpers that allow you to configure your system to suit your application.

The following tables list the function of each jumper and connector on the board.

---

<b>Jumpers</b>	
<b>Label</b>	<b>Function</b>
J1	Internal buzzer select
J4	Clear CMOS
J5	ATX soft-power switch connector
J6	Audio output select
J8	LCD driving voltage select
J9	LCD clock select
J10	Audio Power
J11	COM4 RI pin voltage select
J12	COM3 RI pin voltage select
J13	COM2 RS232/422/485 setting
J14	COM2 RS232/422/485 selection
SW1 (1~3)	CPU frequency ratio
SW1 (5, 6)	DOC address select
SW2 (1)	CPU clock select

---

---

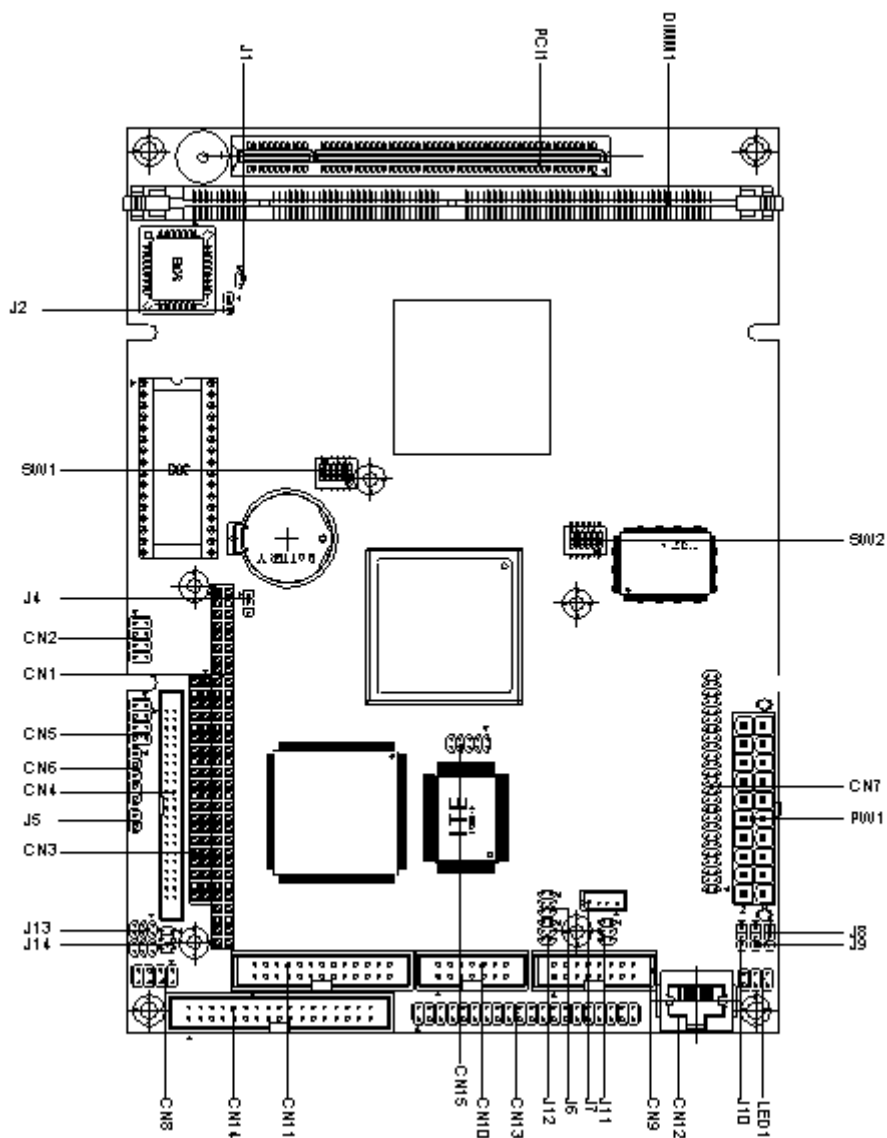
**Connectors**

---

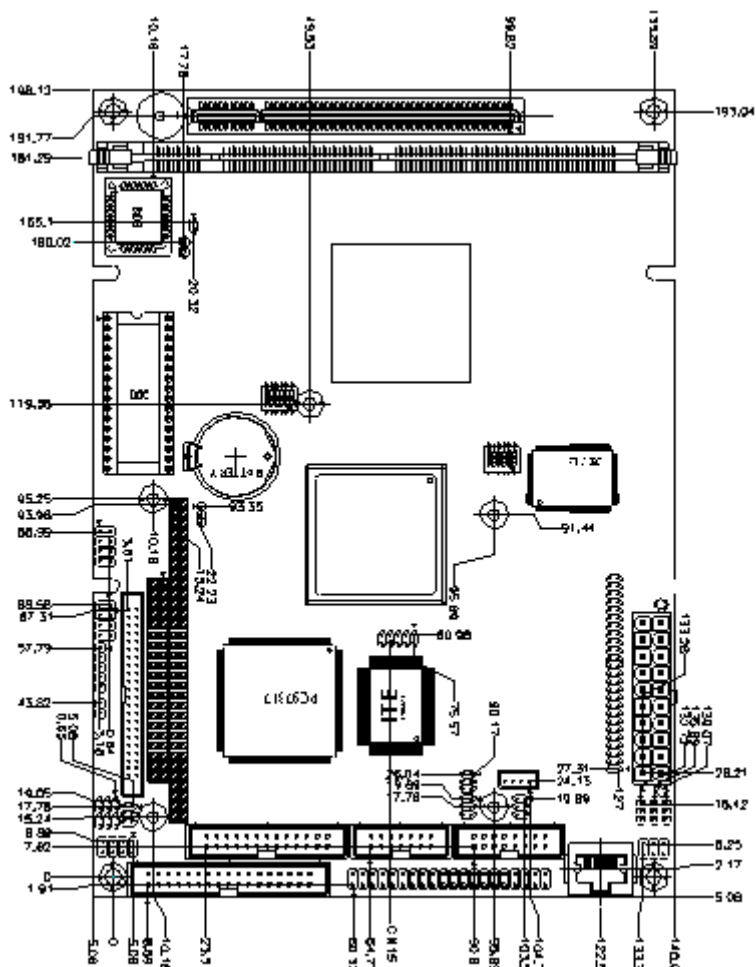
<b>Label</b>	<b>Function</b>
CN1	PC/104 connector
CN2	USB ports connector
CN4	IDE drive connector
CN5	Front panel connector
CN6	IrDA connector
CN7	LCD display connector
CN8	Keyboard and PS/2 mouse connector
CN9	VGA display connector
CN10	Audio connector
CN11	Printer port connector
CN12	100Base-Tx Ethernet connector
CN13	Serial ports connector
CN14	Floppy drive connector
CN15	Digital I/O connector
PW1	ATX power connector
J7	CD-ROM signal input connector
LED1	Ethernet Tx/Rx/Link LED connector
U4	DiskOnChip socket

---

## Locating Jumpers and Connectors



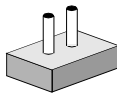
# Mechanical Drawing



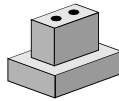
## Setting Jumpers

---

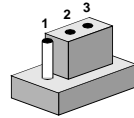
You can configure your card to match the needs of your applications by setting jumpers. A jumper is the simplest kind of electric switch. It consists of two metal pins and a small metal clip (often protected by a plastic cover) that slides over the pins to connect them. To close a jumper you can connect the pins with the clip. To open a jumper you can remove the clip. Sometimes a jumper will have three pins, labeled 1, 2, and 3. In this case you would connect either pins 1 and 2 or 2 and 3.



**Open**



**Closed**



**Closed 2-3**

The jumper settings are schematically depicted in this manual as follows:



**Open**



**Closed**



**Closed 2-3**

A pair of needle-nose pliers may be helpful when working with jumpers.

If you have any doubts about the best hardware configuration for your application, contact your local distributor or sales representative before you make any changes.

## Installing and Upgrading CPU

---

BGA type CPU for PCM-4896L series is installed and all related setting were done in factory. Please do not attempt to change any CPU setting, this may cause an un-expected damage to this board.

**Warning!** *Always disconnect the power cord from your chassis when you are working on it. Do not make connections while the power is on as sensitive electronic components can be damaged by the sudden rush of power. Only experienced electronics personnel should open the PC chassis.*



**Caution!** *Always ground yourself to remove any static charge before touching the PC board. Modern electronic devices are very sensitive to static electric charges. Use a grounding wrist strap at all times. Place all electronic components on a static-dissipative surface or in a static-shielded bag when they are not in the chassis.*



**Any CPU related setting change is prohibited, Improper settings may damage the CPU.**

# Installing DRAM (DIMMs)

---

## System Memory

The left edge of the PCM-4896L contains a socket for 168-pin dual inline memory module (DIMM). The socket uses 3.3 V unbuffered synchronous DRAM (SDRAM). DIMM is available in capacities of 16, 32, 64, or 128 MB. The socket can be filled in the DIMM of any size, giving your PCM-4896 single board computer between 16 and 128 MB of memory

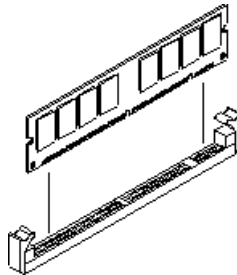
## Supplementary Information about DIMM

Your PCM-4896 C1.0 can accept both regular and PC-100 SDRAM DIMM Module(with or without parity).

Single-sided modules are typically 16 or 64 MB; double-sided modules are usually 32 or 128 MB.

## Memory Installation Procedures

To install DIMM, first make sure the two handles of the DIMM socket are in the "open" position. i.e. The handles remain outward. Slowly slide the DIMM module along the plastic guides on both ends of the socket. Then press the DIMM module right down into the socket, until you hear a click. This is when the two handles have automatically locked the memory module into the correct position of the DIMM socket. (See Figure below) To take away the memory module, just push both handles outward, and the memory module will be ejected by the mechanism in the socket.



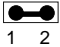
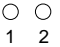
## Internal Buzzer Select (J1)

---

---

### Internal Buzzer Select (J1)

---

	Internal Buzzer	External Speaker
J1		

## Clear CMOS (J4)

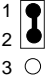

---

You can use J4 to clear the CMOS data if necessary . To reset the CMOS data, set J4 to 2-3 closed for just a few seconds, and then move the jumper back to 1-2 closed.

---

### Clear CMOS (J4)

---

	Protect*	Clear CMOS
J4		

---

\*default

## ATX Soft-Power Switch Connector (J5)

---

The ATX Soft-Power switch connector is a 2-pin headerPlease plug the power switch cable from your system to the Soft-Power switch connector marked J5.

## Audio Output Select (J6)

You can select the output mode of onboard audio connector (CN10) by setting J6.

"Speaker out" is the output signal amplified by onboard amplifier

### Audio Output Select (J6)

	Line out*		Speaker out	
J6	2		1	
	4		3	
	6		5	

\*default

## CD Audio Connector (J7)

This connector is used to connect to a CD audio cable.

### CD Audio Connector (J7)

Pin	Signal
1	GND
2	CD_L
3	GND
4	CD_R

## LCD Driving Voltage Select (J8)

You can select the LCD connector CN7 (pin 5 and pin 6) driving voltage by setting J8. The configurations are as follows:

### LCD Driving Voltage Select (J8)

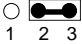
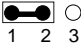
	5V	3.3V *
J8		
	1 2 3	1 2 3

\*default

## LCD Clock Signal Select (J9)

---


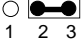
You can select the LCD control signal by setting J9. The following chart shows the available options.

LCD Clock Signal Select (J9)		
	SHF CLK *	ASHF CLK
J9		
*default		

## Audio Power Setting (J10)

---

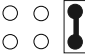
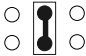

The default setting is pin1 and pin 2 closed to offer audio power.

Audio Power Setting (J10)		
	Vcc *	Reserved
J10		
*default		




## COM3/COM4 RI Pin Voltage Select (J12, J11)

The 9th pin of COM3 and COM4 (9-pin D-sub connector) can be selected as RI, +5V or +12V by setting J12 & J11.

### COM3 RI Pin Setting (J12)

	RI*	+5V	+12V
J12	1 3 5	1 3 5	1 3 5
			
	2 4 6	2 4 6	2 4 6

### COM4 RI Pin Setting (J11)

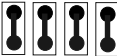



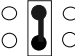

	RI*	+5V	+12V
J11	1 3 5	1 3 5	1 3 5
			
	2 4 6	2 4 6	2 4 6

\*default

## COM2 RS-232/422/485 Select (J13, J14)

The PCM-4896L COM2 serial port can be selected as RS-232, RS-422, or RS-485 by setting J13 & J14.

### COM2 Select (J13, J14)

	RS-232*	RS-422	RS-485
J13	1 4 7 10	1 4 7 10	1 4 7 10
			
	3 6 9 12	3 6 9 12	3 6 9 12
J14	1 3 5	1 3 5	1 3 5
			
	2 4 6	2 4 6	2 4 6

\*default

## SW1 (1~3) CPU Frequency Ratio

---

The GX1 CPU core frequency = CPU frequency ratio (4~10X) \* External CPU clock (33 or 30MHz). The following table shows the available configurations.

Ratio \ SW1	1	2	3
4X	ON	ON	ON
5X	ON	OFF	OFF
6X	OFF	ON	OFF
7X	OFF	OFF	ON
9X	ON	OFF	ON
10X	ON	ON	OFF

## SW2 (1) CPU Clock Select

---

You can configure the CPU external clock to 33MHz or 30MHz by setting SW2 (1).

Freq. \ SW2	1
33MHz*	ON
30MHz	OFF

***Any CPU setting change is strongly prohibited!!***

## GX1 CPU Jumper Setting Examples

---

CPU \ SW	SW1-1	SW1-2	SW1-3		SW2-1
180 MHz	OFF	ON	OFF		OFF
200 MHz	OFF	ON	OFF		ON
233 MHz	OFF	OFF	ON		ON
266 MHz	ON	OFF	ON		OFF
300 MHz	ON	ON	OFF		OFF

***Any CPU setting change is strongly prohibited!!***

## DOC Address Select SW1 (5, 6)

---

The DiskOnChip 2000 occupies an 8 K byte window in the upper memory address range of D400 to E000. You should ensure this does not conflict with any other device's memory address.

The configuration are as follows:

Address \ SW1	5	6
Disable	ON	ON
D400	OFF	OFF
D800	ON	OFF
DC00	OFF	ON

These addresses might conflict with the ROM BIOS of other peripheral boards. Please select the appropriate memory address to avoid memory conflicts.

## Power Connectors (PW1, J3)

---

### ATX Power Connector (PW1)

The ATX power supply uses 20-pin connector shown as below.  
Please make sure you plug in the right direction.

---

#### ATX Power Connector (PW1)

---

Pin	Signal	Pin	Signal
1	N/C	11	N/C
2	N/C	12	-12V
3	GND	13	GND
4	+5V	14	PON
5	GND	15	GND
6	+5 V	16	GND
7	GND	17	GND
8	N/C	18	-5V
9	5V SB	19	+5V
10	+12V	20	+5V

---

## USB Connector (CN2)

---

The PCM-4896L provides two USB (Universal Serial Bus) interfaces, which give complete plug and play, hot attach/detach for up to 127 external devices. The USB interfaces comply with USB specification Rev. 1.0, and can be disabled in the system BIOS setup.

### PCM-4896L C1.0

---

#### USB Connector (CN2)

---

Pin	Function	Pin	Function
1	GND	5	Vcc
2	UD1+	6	UD0-
3	UD1-	7	UD0+
4	Vcc	8	GND

---

## IDE Hard Drive Connector (CN4)

---

You can attach one or two Enhanced Integrated Device Electronics hard disk drives to the mainboard's internal controller. The mainboard's IDE controller uses a PCI local-bus interface. This advanced interface supports faster data transfer rate and allows the IDE hard drive to exceed 528 MB.

### Connecting the Hard Drive

Connecting drives is done in a daisy-chain fashion and requires one of two cables, depending on the drive size. 1.8" and 2.5" drives need a 1 x 44-pin to 2 x 44-pin flat-cable connector. 3.5" drives use a 1 x 44-pin to 2 x 40-pin connector.

Wire number 1 on the cable is normally red or blue, and the other wires are usually gray.

1. Connect one end of the cable to CN4 and make sure that the red (or blue) wire corresponds to pin 1 on the connector, which is labeled on the board (on the right side).
2. Plug the other end of the cable to the Enhanced IDE hard drive, with pin 1 on the cable corresponding to pin 1 on the hard drive. (see your hard drive's documentation for the location of the connector).

Connect a second drive as described above.

Unlike floppy drives, IDE hard drives can connect to either end of the cable. If you install two drives, you will need to set one as the master and the other as the slave by using jumpers on the drives. If you install just one drive, set it as the master.

## IDE Hard Drive Connector (CN4)

### IDE Hard Drive Connector (CN4)

Pin	Signal	Pin	Signal
1	IDE RESET	2	GND
3	DATA 7	4	DATA 8
5	DATA 6	6	DATA 9
7	DATA 5	8	DATA 10
9	DATA 4	10	DATA 11
11	DATA 3	12	DATA 12
13	DATA 2	14	DATA 13
15	DATA 1	16	DATA 14
17	DATA 0	18	DATA 15
19	SIGNAL GND	20	N/C
21	HDRQ	22	GND
23	IO WRITE	24	GND
25	IO READ	26	GND
27	IO CHANNEL READY	28	GND
29	HACK	30	GND
31	IRQ14	32	N/C
33	ADDR 1	34	N/C
35	ADDR 0	36	ADDR 2
37	HARD DISK SELECT 0	38	HARD DISK SELECT 1
39	HD LED	40	GND
41	VCC	42	VCC
43	GND	44	N/C

## Front Panel Connector (CN5)

---

Next you may want to install external switches to monitor and control the mainboard. These features are completely optional, please install them only if you need them. The front panel connector (CN5) is an 8-pin male, dual in-line header and provides connections for a speaker, hard disk access indicator, and an input switch for resetting the card.

Front Panel Connector (CN5)			
Pin	Signal	Pin	Signal
7	Reset - (GND)	8	Reset Switch
5	GND	6	NC
3	Speaker -	4	Vcc
1	HDD LED -	2	Vcc

### Speaker

The mainboard can drive an  $8\Omega$  external speaker at 0.5 watts. If there is no external speaker, the PCM-4896L provides an on-board buzzer as an alternative.

### LED Interface

The front panel LED indicator for hard disk access is an active low signal (24 mA sink rate).

## IrDA Connector (CN6)

---

The IrDA connector (CN6) can be configured to support wireless infrared module, with this module and software such as laplink or Win95 Direct Cable connection, user can transfer files to or from laptops, notebooks, PDA, and printers. This connector supports HPSIR (115.2Kbps, 2 meters), ASK-IR (56Kbps), and Fast IR (4Mbps, 2 meters).

Install infrared module onto IrDA connector and enable infrared function from BIOS setup. But please make sure to have correct orientation when you plug onto IrDA connector (CN6).

---

### IrDa Connector (CN6)

Pin	Signal
1	Vcc
2	FIRx
3	IRx
4	GND
5	IRTx

---

## Display Connectors (CN7, CN9)

---

The mainboard's PCI SVGA interface can drive conventional CRT displays and is capable of driving a wide range of flat panel displays, including electroluminescent (EL), gas plasma, passive LCD, and active LCD displays. The board has two connectors to support these displays, one for standard CRT VGA monitors and the other for flat panel displays.

### VGA Display Connector (CN9)

CN9 is a 16-pin, dual-in-line header used for conventional CRT displays. A simple one-to-one adapter can be used to match CN9 to a standard 15-pin D-SUB connector commonly used for VGA.

<b>VGA Display Connector (CN9)</b>			
<b>Pin</b>	<b>Signal</b>	<b>Pin</b>	<b>Signal</b>
1	RED	9	VCC +5V
2	GREEN	10	GND
3	BLUE	11	N/C
4	N/C	12	DDC DAT
5	GND	13	H-SYNC
6	GND	14	V-SYNC
7	GND	15	DDC CLK
8	GND	16	N/C

## LCD Connector (CN7)

CN7 is a 50-pin, dual-in-line header used for flat panel displays.

When the mainboard's power is applied, the control signal is low until the relevant flat panel signals are present.

Configuration of the VGA interface is done completely via the software utility. You do not have to set any jumpers.

<b>LCD Connector (CN7)</b>			
<b>Pin</b>	<b>Signal</b>	<b>Pin</b>	<b>Signal</b>
1	+12 V <sub>DC</sub>	2	+12 V <sub>DC</sub>
3	GND	4	GND
5	+5 V <sub>DC</sub> or +3.3 V <sub>DC</sub>	6	+5 V <sub>DC</sub> or +3.3 V <sub>DC</sub>
7	ENAVEE	8	GND
9	P0	10	P1
11	P2	12	P3
13	P4	14	P5
15	P6	16	P7
17	P8	18	P9
19	P10	20	P11
21	P12	22	P13
23	P14	24	P15
25	P16	26	P17
27	P18	28	P19
29	P20	30	P21
31	P22	32	P23
33	P24	34	P25
35	SHF CLK	36	FLM (V SYS)
37	M	38	LP (H SYS)
39	GND	40	ENABKL
41	P26	42	P27
43	P28	44	P29
45	P30	46	P31
47	P32	48	P33
49	P34	50	P35

## Keyboard and Mouse Connector (CN8)

---

The mainboard provides a keyboard connector which supports both a keyboard and a PS/2 style mouse. In most cases, especially in embedded applications, a keyboard is not used. The standard PC/AT BIOS will report an error or fail during power-on-self-test (POST) after a reset if the keyboard is not present. The mainboard BIOS Advanced Setup Menu allows you to select "Present" or "Absent" under the "System Keyboard" section. This allows no-keyboard operation in embedded system applications without the system halting under POST.

---

### Keyboard and Mouse Connector (CN8)

---

Pin	Signal	Pin	Signal
1	KB DATA	5	KB CLOCK
2	GND	6	Vcc
3	Mouse DATA	7	Mouse CLOCK
4	N/C	8	N/C

---

## Audio Connector (CN10)

---

The PCM-4896L provides all major audio signals on a 14-pin flat-cable connector, CN10.

Please attach the Mic In, Line In, and Audio Out to the corresponding pins as shown in the following table.

Audio Connector (CN10)			
Pin	Signal	Pin	Signal
1	Mic In	2	Reserve for future use
3	GND	4	Reserve for future use
5	Line In Left	6	Reserve for future use
7	Line In Right	8	Reserve for future use
9	GND	10	Reserve for future use
11	Audio Out Left	12	Audio Out Right
13	GND_Line out	14	GND_Speaker out

**CAUTION:** *Both Line-out and Speaker-out modes share the same pair of Audio Out signal lines but different grounds. In addition to setting up J6 on page 18, make sure you use the corresponding ground signal when making the cable by yourself.*

## Parallel Port Connector (CN11)

---

Normally, the parallel port is used to connect the board to a printer. The PCM-4896L includes an onboard parallel port, accessed through CN11, a 26-pin flat-cable connector. You need an adapter cable if you use a traditional DB-25 connector. The cable has a 26-pin connector on one end and a DB-25 connector on the other.

### Parallel Port IRQ

The onboard parallel port is designated as LPT1 and can be disabled or changed to LPT2 or LPT3 in the system BIOS setup.

### Parallel Port Connector Table (CN11)

Parallel Port Connector (CN11)			
Pin	Signal	Pin	Signal
1	STROBE	2	AUTOFD
3	DO	4	ERR
5	D1	6	INIT
7	D2	8	SLCTINI
9	D3	10	GND
11	D4	12	GND
13	D5	14	GND
15	D6	16	GND
17	D7	18	GND
19	ACK	20	GND
21	BUST	22	GND
23	PE	24	GND
25	SLCT	26	N/C

## 100Base-Tx Ethernet Connector (CN12)

---

This 100Base-Tx Ethernet connector is a standard RJ-45 connector

The onboard Realtek RTL8139C fast Ethernet controller supports 10Mb/s and 100 Mb/s N-way auto-negotiation operation.

---

**100Base-Tx Ethernet Connector (CN12)**

Pin	Signal	Pin	Signal
1	Tx+	2	Tx-
3	Rx+	4	N/C
5	N/C	6	Rx-
7	N/C	8	N/C

---

## Digital I/O Connector (CN15)

---

The PCM-4896 C1.0 has onboard 4 TTL digital input channels and 4 TTL digital output channels. The pin assignment of CN15 are as follows and the input address is 281, while the output address is 280.

---

**Digital I/O Connector (CN15)**

Pin	Signal	Pin	Signal
1	DI 0	2	DI 1
3	DI 2	4	DI 3
5	DO 0	6	DO 1
7	DO 2	8	DO 3
9	Vcc	10	GND

---

## Serial Ports (CN13)

The PCM-4896L offers four serial ports, three RS-232 and one RS-232/422/485. These ports allow you to connect them to serial devices (mouse, printers, etc.).

### COM1-4 RS-232/422/485 Serial Ports (CN13)

COM1, COM2, COM3, COM4 RS-232/422/485 Serial Port				
	PIN	SIGNAL	PIN	SIGNAL
<b>COM1</b>	1	DCDA	2	DSRA
	3	RXDA	4	RTSA
	5	TXDA	6	CTSA
	7	DTRA	8	RIA
	9	GND	10	N.C.
<b>COM2</b>	11	DCDB (422TXD-/485DATA-)	12	DSRB
	13	RXDB (422RXD+)	14	RTSB
	15	TXDB (422TXD+/485DATA+)	16	CTSB
	17	DTRB (422RXD-)	18	RIB
	19	GND	20	N.C.
<b>COM3</b>	21	DCDC	22	DSRC
	23	RXDC	24	RTSC
	25	TXDC	26	CTSC
	27	DTRC	28	RIC/+5V/+12V
	29	GND	30	N.C.
<b>COM4</b>	31	DCDD	32	RSRD
	33	RXDD	34	RTSD
	35	TXDD	36	CTSD
	37	DTRD	38	RID/+5V/+12V
	39	GND	40	N.C.

## Floppy Drive Connector (CN14)

---

You can attach up to two floppy drives to the mainboard controller and use any combination of 5.25" (360 KB and 1.2 MB) and/or 3.5" (720 KB, 1.44 MB, and 2.88 MB) drives.

A 34-pin daisy-chain drive connector cable is required for a dual-drive system. On one end of the cable is a 34-pin flat-cable connector and on the other end are two sets of floppy disk drive connectors. Each set consists of a 34-pin flat-cable connector (usually used for 3.5" drives) and a printed-circuit board connector (usually used for 5.25" drives).

Wire number 1 on the cable is normally red or blue, and the other are usually gray.

### Connecting the Floppy Drive

1. Plug the 34-pin flat-cable connector into CN14 and make sure that the red or blue wire corresponds to pin 1 on the connector.
2. Attach the appropriate connector on the other end of the cable to the floppy drive(s) and you can use only one connector in the set. The set on the end (after the twist in the cable) connects to the A: drive, while the set in the middle connects to the B: drive.
3. If you are connecting a 5.25" floppy drive, line up the slot in the printed circuit board with the blocked-off part of the cable connector.
4. If you are connecting a 3.5" floppy drive, you may have trouble determining which pin is pin number 1. Please look for a number printed on the circuit board indicating pin number 1. Also, the connector on the floppy drive connector may have a slot. When the slot is up, pin number 1 should be on the right. Please check the documentation that came with the drive for more information.

If you desire, connect the B: drive to the connectors in the middle of the cable as described above.

## Floppy Drive Connector (CN14)

<b>Floppy Drive Connector (CN14)</b>			
<b>Pin</b>	<b>Signal</b>	<b>Pin</b>	<b>Signal</b>
1	GND	2	DENSITY SELECT
3	GND	4	N/C
5	GND	6	DRIVE TYPE
7	GND	8	INDEX
9	GND	10	MOTOR 0
11	GND	12	DRIVE SELECT 1
13	GND	14	DRIVE SELECT 2
15	GND	16	MOTOR 1
17	GND	18	DIRECTION
19	GND	20	STEP
21	GND	22	WRITE DATA
23	GND	24	WRITE GATE
25	GND	26	TRACK 0
27	GND	28	WRITE PROTECT
29	GND	30	READ DATA
31	GND	32	HEAD DELECT
33	GND	34	DISK CHANGE

## Ethernet LED Signal Connectors (LED1)

---

The PCM-4896L supports three sets of LED connector for external LED indicators.

### Ethernet Active Signal LED

Flashing Tx or Rx LEDs indicate that the PCM-4896L is transmitting or receiving data.

### Ethernet Link Signal LED

A continuously lit LED indicates good linkage between the PCM-4896L and its supporting hub.

---

#### Ethernet LED Signal Connectors (LED1)

---

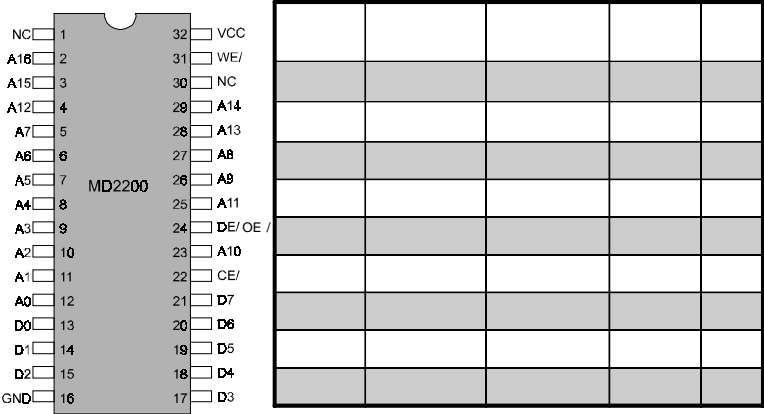
Pin	Signal
1	Rx LED
2	+5V
3	Link LED
4	+5V
5	Tx LED
6	+5V

---

# DiskOnChip Socket (U4)

The DiskOnChip 2000 family of products provides a single chip solid-state flash disk in a standard 32-pin DIP package. The DiskOnChip 2000 is a solid-state disk with no moving parts, resulting in a significant reduction in power consumption and an increase in reliability. The DiskOnChip is a small plug and play Flash disk. It is easy to use and saves integration overhead.

The DiskOnChip 2000 family of products is available in capacities ranging from 2MB up to 288MB, unformatted. In order to manage the disk, the DiskOnChip 2000 includes the TrueFFS, M-Systems Flash File System proprietary software. The DiskOnChip 2000 package is pin-to-pin compatible with a standard 32-pin EPROM device.



Note 1: Pins A13 through A16 are not used by the MD2200. They are kept for socket backward compatibility with ED 1100 (DiskOnChip 1000)

Note 2: Pins 1 and 30 are not used by MD2200

## DiskOnChip (DOC) 2000 Installation

---

When the DOC is installed correctly a DOC will work like an HDD or an FDD. To install the DOC on the mainboard, please follow the instructions below:

1. Plug the DOC into the socket. Make sure pin 1 of the DOC is aligned with pin 1 of the socket.
2. Push the DOC into the socket until it is firmly seated in the socket.

**Caution: the DOC may be permanently damage if it is installed incorrectly.**

3. Set the jumper for the memory address of the DOC.

### Note:

**The memory shadow function sometimes will create conflicts with the memory window. You should disable the memory shadow from the BIOS SETUP if the DOC cannot be accessed.**

### Configure DOC as a Boot Device

To configure a DOC as a boot drive, you should copy the operating system files onto the DOC. The following procedure is an example of the initialization process.

1. Install a DOC into your system.
2. Insert a bootable floppy disk in drive A: and boot the system.
3. At the DOS prompt, type **SYS C:** to transfer the DOS system files to the DOC (assuming the DiskOnChip is installed as drive C:). Reboot the system.
4. Go to the BIOS Setup Utility by hitting the <DEL> key and set the type of Primary Master or C: Drive as *Not Installed*.
5. Remove the floppy disk from the drive A: and leave the BIOS Setup Utility. The system should boot from the DOC.



## **Award BIOS Setup**

This chapter describes how to configure the BIOS for the PCM-4896L.

## Starting Setup

---

The Award BIOS is immediately activated when you first turn on the computer. The BIOS reads system configuration information in CMOS RAM and begins the process of checking out the system and configuring it through the power-on self test (POST).

When these preliminaries are finished, the BIOS seeks an operating system on one of the data storage devices (hard drive, floppy drive, etc.). The BIOS launches the operating system and hands control of system operations to it.

During POST, you can start the Setup program in one of two ways: 1. By pressing Del immediately after switching the system on, or 2. By pressing Del or pressing Ctrl-Alt-Esc when the following message appears briefly at the bottom of the screen during POST

TO ENTER SETUP BEFORE BOOT PRESS DEL KEY

If the message disappears before you respond and you still wish to enter Setup, restart the system to try again by turning it OFF then ON or pressing the RESET button on the system case. You may also restart by simultaneously pressing Ctrl-Alt-Del. If you do not press the keys at the correct time and the system does not boot, an error message appears and you are again asked to

PRESS F1 TO CONTINUE, DEL TO ENTER SETUP

## Setup Keys

---

These keys help you navigate in Setup:

Up arrow	Move to previous item
Down arrow	Move to next item
Left arrow	Move to the item in the left hand
Right arrow	Move to the item in the right hand
Esc	Main Menu: Quit and not save changes into CMOS RAM Other pages: Exit current page and return to Main Menu
PgDn/+	Increase the numeric value or make changes
PgDn/-	Decrease the numeric value or make changes
F1	General help, only for Status Page Setup Menu and Option Page Setup Menu
F2	Change color from total 16 colors. F2 to select color forward, Shift-F2 to select color backward
F3	Calendar, only for Status Page Setup Menu
F4	Reserved
F5	Restore the previous CMOS value from CMOS, only for Option Page Setup Menu
F6	Load the default CMOS RAM value from BIOS default table, only for Option Page Setup Menu
F7	Load the default
F8	Reserved
F9	Reserved
F10	Save all the CMOS changes, only for Main Menu

## Getting Help

---

Press F1 to pop up a small help window that describes the appropriate keys to use and the possible selections for the highlighted item. To exit the Help Window press Esc or the F1 key again.

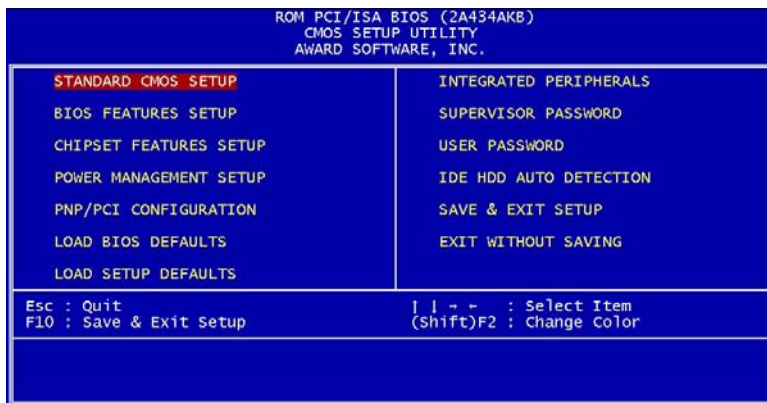
### In Case of Problems

If, after making and saving system changes with Setup, you discover that your computer no longer is able to boot, the **AwardBIOS** supports an override to the CMOS settings that resets your system to its default configuration.

You can invoke this override by immediately pressing Insert; when you restart your computer. You can restart by either using the ON/OFF switch, the RESET button or by pressing Ctrl-Alt-Delete.

*The best advice is to alter only settings that you thoroughly understand. In particular, do not change settings in the Chipset screen without a good reason. The Chipset defaults have been carefully chosen by Award Software or your system manufacturer for the best performance and reliability. Even a seemingly small change to the Chipset setup may causing the system to become unstable.*

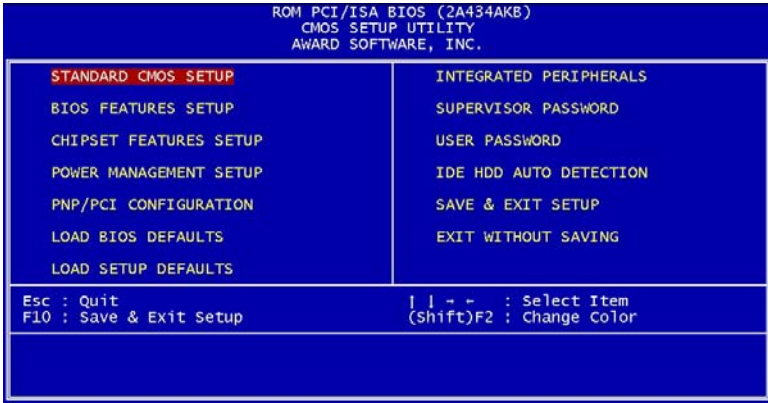
# Main Setup Menu



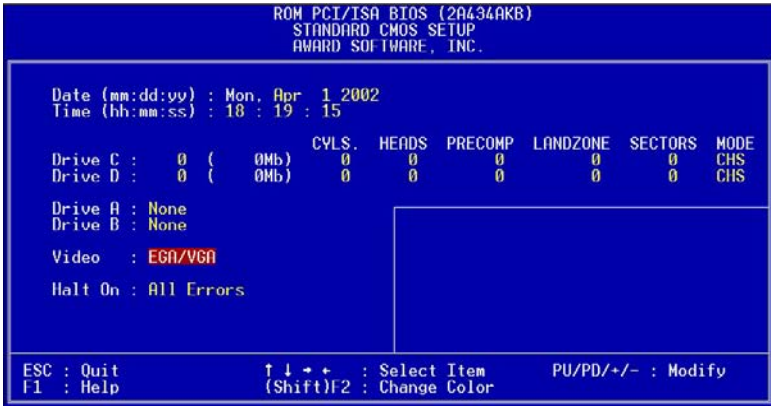
Standard CMOS	Options in the original PC AT-compatible BIOS.
BIOS Features	Award Software enhanced BIOS options.
Chipset Features	Options specific to your system chipset.
Power Management	Advanced Power Management (APM) options.
PnP/PCI Configuration	Plug and Play standard and PCI Local Bus configuration options.
Integrated Peripherals	I/O subsystems that depend on the integrated peripherals controller in your system.
Supervisor/User Password Setting	Change, set, or disable a password. In BIOS versions that allow separate user and supervisor passwords, only the supervisor password permits access to Setup. The user password generally allows only power-on access.
IDE HDD Auto Detection	Automatically detect and configure IDE hard disk parameters.

Load BIOS Defaults	BIOS defaults are factory settings for the most stable, minimal-performance system operations.
Load Setup Defaults	Setup defaults are factory settings for optimal-performance system operations.
Save & Exit Setup	Save settings in nonvolatile CMOS RAM and exit Setup.
Exit Without Save	Abandon all changes and exit Setup.

# Standard CMOS Setup



When you choose the STANDARD CMOS SETUP option from the INITIAL SETUP SCREEN menu, the screen below is displayed.



This standard setup menu allows users to configure system components such as the date, time, hard disk drive, floppy drive, display , and memory. Online help for each field can be accessed by pressing F1.

### **Date and Time Configuration**

The BIOS determines the day of the week from the other date information. This field is for information only

Press the left or right arrow key to move to the desired field (date, month, year). Press the PgUp/- or PgDn/+ key to increment the setting, or type the desired value into the field.

The time format is based on the 24-hour military-time clock. For example, 1 p.m. is 13:00:00. Press the left or right arrow key to move to the desired field. Press the PgUp/- or PgDn/+ key to increment the setting, or type the desired value into the field.

### **HARD DISKS**

The BIOS supports up to four IDE drives. This section does not show information about other IDE devices, such as a CD-ROM drive, or about other hard drive types, such as SCSI drives.

***NOTE:** We recommend that you select type AUTO for all drives.*

The BIOS can automatically detect the specifications and optimal operating mode of almost all IDE hard drives. When you select type AUTO for a hard drive, the BIOS detects its specifications during POST, every time the system boots.

If you do not want to select drive type AUTO, other methods of

selecting the drive type are available:

1. Match the specifications of your installed IDE hard drive(s) with the preprogrammed values for drive types 1 through 45.
2. Select USER and enter values into each drive parameter field.
3. Use the IDE HDD AUTO DETECTION function in Setup.

Here is a brief explanation of drive specifications:

- **Type:** The BIOS contains a table of pre-defined drive types. Each defined drive type has a specified number of cylinders, number of heads, write precompensation factor, landing zone, and number of sectors. Drives whose specifications do not accommodate any pre-defined type are classified as type USER.
- **Size:** Disk drive capacity (approximate). Note that this size is usually slightly greater than the size of a formatted disk given by a disk-checking program.
- **Cyls:** Number of cylinders
- **Head:** Number of heads
- **Precomp:** Write precompensation cylinder
- **Landz:** Landing zone
- **Sector:** Number of sectors
- **Mode:** Auto, Normal, Large, or LBA
  - **Auto:** The BIOS automatically determines the optimal mode.
  - **Normal:** Maximum number of cylinders, heads, and sectors supported are 1024, 16, and 63.
  - **Large:** For drives that do not support LBA and have more than 1024 cylinders.

- **LBA** (Logical Block Addressing): During drive accesses, the IDE controller transforms the data address described by sector head, and cylinder number into a physical block address, significantly improving data transfer rates. For drives with greater than 1024 cylinders.

**Drive A**  
**Drive B**

Select the correct specifications for the diskette drive(s) installed in the computer.

None	No diskette drive installed
360K, 5.25 in	5-1/4 inch PC-type standard drive; 360 kilobyte capacity
1.2M, 5.25 in	5-1/4 inch AT-type high-density drive; 1.2 megabyte capacity
720K, 3.5 in	3-1/2 inch double-sided drive; 720 kilobyte capacity
1.44M, 3.5 in	3-1/2 inch double-sided drive; 1.44 megabyte capacity
2.88M, 3.5 in	3-1/2 inch double-sided drive; 2.88 megabyte capacity

**Video**

This field provide the video type supported by thie board. select your video display type:

EGA/VGA	Support EGA/VGA display
CGA 4	Support CGA 40 display
CGA 80	Support CGA 80 display
MONO	Support Mono display

### **Halt On**

During the power-on-self-test (POST), the computer stops if the BIOS detects a hardware error. You can tell the BIOS to ignore certain errors during POST and continue the boot-up process. These are the selections:

- **No errors:** POST does not stop for any errors.
- **All errors:** If the BIOS detects any non-fatal error, POST stops and prompts you to take corrective action.
- **All, But Keyboard:** POST does not stop for a keyboard error, but stops for all other errors.
- **All, But Diskette:** POST does not stop for diskette drive errors, but stops for all other errors.
- **All, But Disk/Key:** POST does not stop for a keyboard or disk error, but stops for all other errors.

### **Memory**

You cannot change any values in the Memory fields; they are only for your information. The fields show the total installed random access memory (RAM) and amounts allocated to base memory, extended memory, and other (high) memory. RAM is counted in kilobytes (KB: approximately one thousand bytes) and megabytes (MB: approximately one million bytes).

RAM is the computer's working memory where the computer stores programs and data currently being used, so they are accessible to the CPU. Modern personal computers may contain up to 64 MB, 128 MB, or more.

#### **• Base Memory**

Typically 640 KB. Also called conventional memory. The DOS operating system and conventional applications use this area.

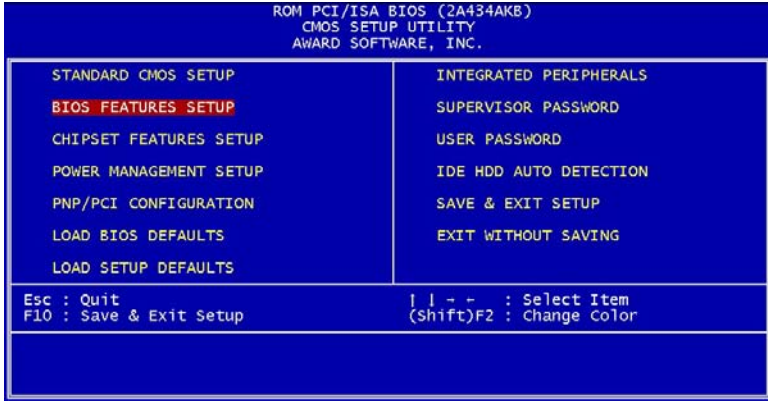
- **Extended Memory**

Above the 1-MB boundary Early IBM personal computers could not use memory above 1 MB, but current PCs and their software can use extended memory.

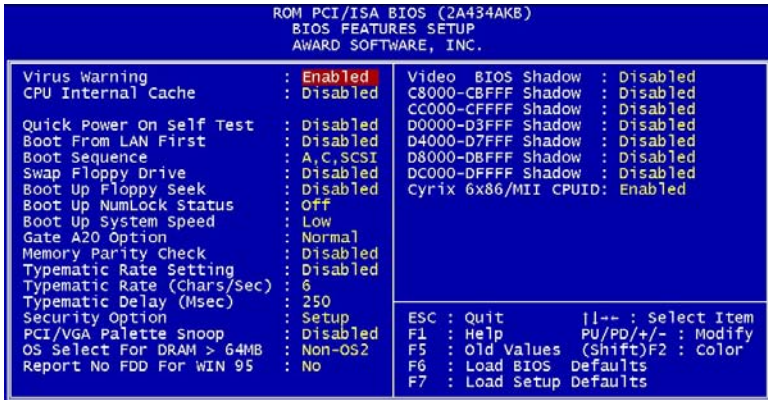
- **Other Memory**

Between 640 KB and 1 MB; often called High memoryDOS may load terminate-and-stay-resident (TSR) programs, such as device drivers, in this area, to free as much conventional memory as possible for applications. Lines in your CONFIG.SYS file that start with LOA-DHIGH load programs into high memory

# BIOS Features Setup



By choosing the BIOS FEATURES SETUP option from the INITIAL SETUP SCREEN menu, the screen below is displayed.



The displayed configuration is based on the manufacturer's SETUP DEFAULTS settings.

### **Virus Warning**

When enabled, you receive a warning message if a program (specifically, a virus) attempts to write to the boot sector or the partition table of the hard disk drive. You should then run an anti-virus program. Keep in mind that this feature protects only the boot sector, not the entire hard drive.

*NOTE: Many disk diagnostic programs that access the boot sector table can trigger the virus warning message. If you plan to run such a program, we recommend that you first disable the virus warning.*

### **CPU Internal Cache/External Cache**

Cache memory is additional memory that is much faster than conventional DRAM (system memory). CPUs from 486-type on up contain internal cache memory, and most, but not all, modern PCs have additional (external) cache memory. When the CPU requests data, the system transfers the requested data from the main DRAM into cache memory, for even faster access by the CPU.

The External Cache field may not appear if your system does not have external cache memory.

### **Quick Power On Self Test**

Select Enabled to reduce the amount of time required to run the power-on-self-test (POST). A quick POST skips certain steps. We recommend that you normally disable quick POST to find a problem during POST than lose data during your work.

### **Boot From LAN First**

To enable this function for booting from LAN (Optional function).

### **Boot Sequence**

The original IBM PCs loaded the DOS operating system from drive A (floppy disk), so IBM PC-compatible systems are designed to search for an operating system first on drive A, and then on drive C (hard disk). However, the BIOS now offers many boot sequence options.

### **Swap Floppy Drive**

This field is effective only in systems with two floppy drives. Selecting enabled assigns physical drive B to logical drive A, and physical drive A to logical drive B.

### **Boot Up Floppy Seek**

When Enabled, the BIOS tests (seeks) floppy drives to determine whether they have 40 or 80 tracks. Only 360-KB floppy drives have 40 tracks; drives with 720 KB, 1.2 MB, and 1.44 MB capacity all have 80 tracks. Because very few modern PCs have 40-track floppy drives, we recommend that you set this field to Disabled to save time.

### **Boot Up NumLock Status**

Toggle between On or Off to control the state of the NumLock key when the system boots. When toggled On, the numeric keypad generates numbers instead of controlling cursor operations.

### **Boot Up System Speed**

To speed the system boot up, the default setting is Enable.

### **Gate A20 Option**

Gate A20 refers to the way the system addresses memory above 1 MB (extended memory). When set to Fast, the system chipset controls Gate A20. When set to Normal, a pin in the keyboard controller controls Gate A20. Setting Gate A20 to Fast improves system speed, particularly with OS/2 and Windows.

### **Typematic Rate Setting**

Key strokes repeat at a rate determined by the keyboard controller. When enabled, the typematic rate and typematic delay can be selected.

**Typematic Rate (Chars/Sec)**

Sets the number of times a second to repeat a key stroke when you hold the key down.

**Typematic Delay (Msec)**

Sets the delay time after the key is held down before it being to repeat the key stroke.

**Typematic Delay (Msec)**

Sets the delay time after the key is held down before it being to repeat the key stroke.

**Security Option**

If you have set a password, select whether the password is required every time the System boots, or only when you enter Setup.

**PCI/VGA Palette Snoop**

To monitor the VGA palette and correct the color display problem caused by some MPEG card.

**OS Select For DRAM>64MB**

Select the operating system that is running with greater than 64MB or RAM on the system.

**No Report of FDD in Windows 95**

Set this option to <NO> when using Windows 98 version, or the FDD will not work.

**Shadow**

Software that resides in a read-only memory (ROM) chip on a device is called firmware. The AwardBIOS permits shadowing of firmware such as the system BIOS, video BIOS, and similar operating instructions that come with some expansion peripherals, such as, for example, a SCSI adaptor

Shadowing copies firmware from ROM into system RAM, where the CPU can read it through the 16-bit or 32-bit DRAM bus. Firmware not shadowed must be read by the system through the 8-bit X-bus. Shad

owing improves the performance of the system BIOS and similar ROM firmware for expansion peripherals, but it also reduces the amount of high memory (640 KB to 1 MB) available for loading device drivers, etc.

Enable shadowing into each section of memory separately . Many system designers hardwire shadowing of the system BIOS and eliminate a System BIOS Shadow option.

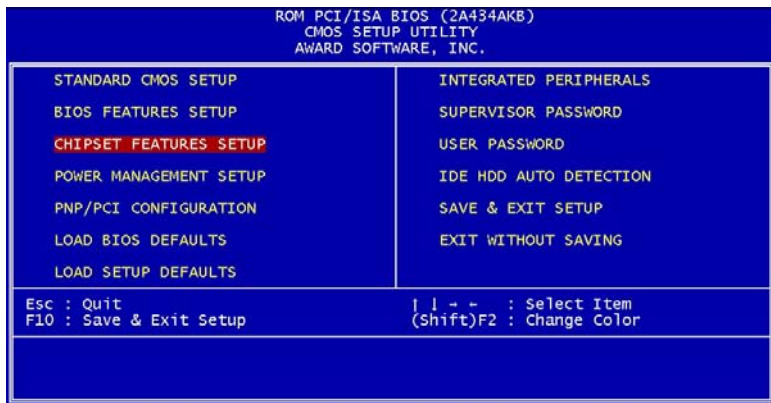
Video BIOS shadows into memory area C0000-C7FFFThe remaining areas shown on the BIOS Features Setup screen may be occupied by other expansion card firmware. If an expansion peripheral in your system contains ROM-based firmware, you need to know the address range the ROM occupies to shadow it into the correct area of RAM.

**Cyrix 6x86/MII CPUID:**

Enable this item to support Cyrix 6x86/MII series CPUID.

# CHIPSET Features Setup

---



By choosing the CHIPSET FEATURES SETUP option from the INITIAL SETUP SCREEN menu, the screen below is displayed.

The displayed configuration is based on the manufacturer's SETUP DEFAULTS settings.

This section allows you to configure the system based on the specific features of the installed chipset. This chipset manages bus speeds and access to system memory resources, such as SDRAM. It also coordinates communications between the conventional ISA bus and the PCI bus. It must be stated that these items should never need to be altered. The default settings have been chosen because they provide the best operating conditions for your system. The only time you might consider making any changes would be if you discovered that data was being lost while using your system.

Because of the complexity and technical nature of some of the options, not all of the options are described here.

### **SDRAM CAS Latency Time**

When synchronous DRAM is installed, you can control the number of CLKs between when the SDRAMs sample a read command and when the controller samples read data from the SDRAMs. Do not reset this field from the default value specified by the system designer.

### **8/16 Bit I/O Recovery Time**

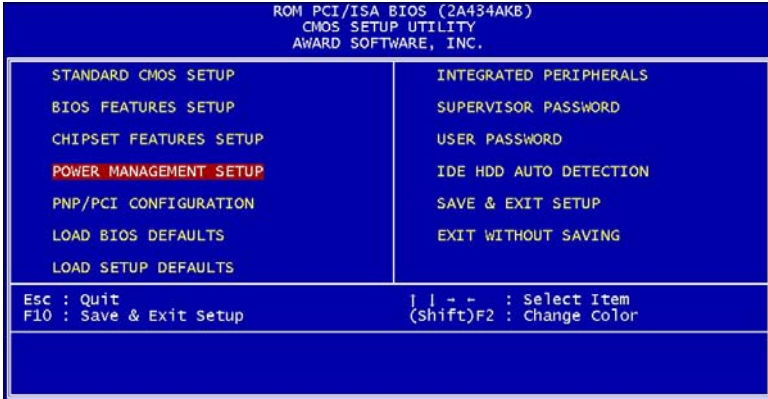
The I/O recovery mechanism adds bus clock cycles between PCI-originated I/O cycles to the ISA bus. This delay takes place because the PCI bus is so much faster than the ISA bus.

These two fields let you add recovery time (in bus clock cycles) for 16-bit and 8-bit I/O.

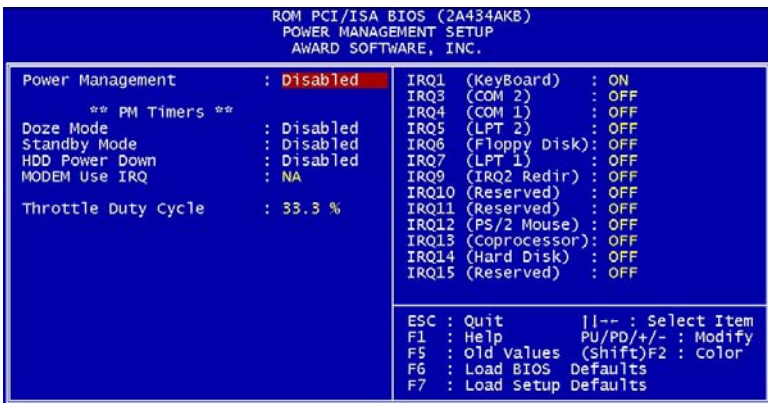
### **USB Controller**

Select Enabled if your system contains a Universal Serial Bus (USB) controller and you have USB peripherals

# Power Management Setup



By choosing the POWER MANAGEMENT option from the INITIAL SETUP SCREEN menu, the screen below is displayed.



### **Power Management**

This option allows you to select the type (or degree) of power saving for Doze, Standby, and Suspend modes.

This table describes each power management mode:

Max Saving	Maximum power savings. Only Available for SL CPUs. Inactivity period is 1 minute in each mode.
User Define	Set each mode individually. Select time-out periods in the section for each mode, below.
Min Saving	Minimum power savings. Inactivity period is 1 hour in each mode.

### **Doze Mode**

After the selected period of system inactivity the CPU clock throttles to a small percentage of its duty cycle between 10 percent and 25 percent for most chipsets. All other devices still operate at full speed.

### **Standby Mode**

After the selected period of system inactivity the fixed disk drive and the video shut off while all other devices still operate at full speed.

### **HDD Power Down**

After the selected period of drive inactivity any system IDE devices compatible with the ATA-2 specification or later power manage themselves, putting themselves into an idle state after the specified time-out and then waking themselves up when accessed.

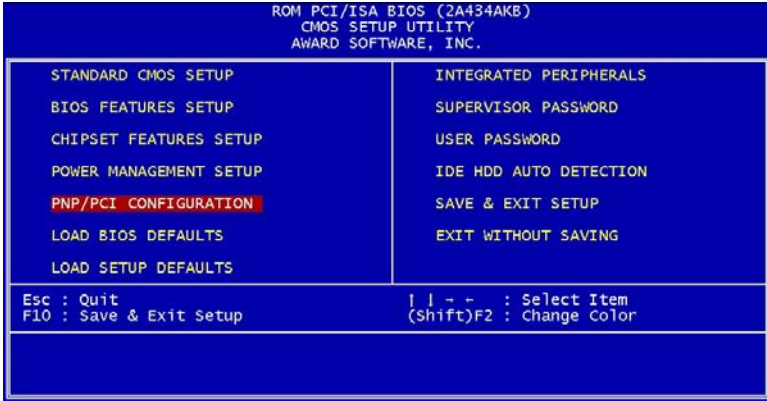
### **MODEM Use IRQ**

Name the interrupt request (IRQ) line assigned to the modem (if any) on your system. Activity of the selected IRQ always awakens the system.

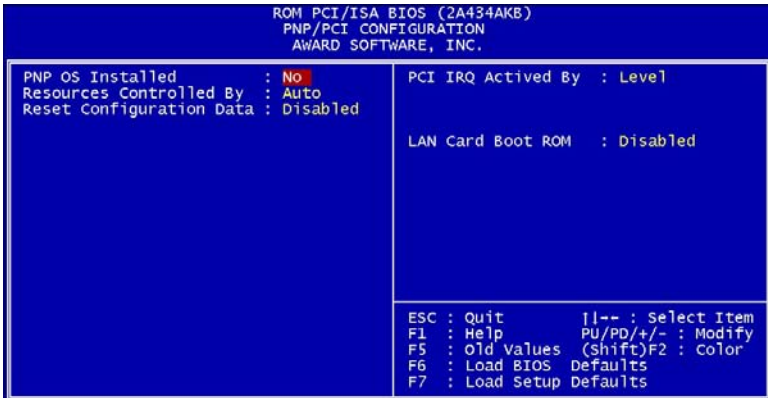
### **Throttle Duty Cycle**

When the system enters Doze mode, the CPU clock runs only part of the time. You may select the percent of time that the clock runs.

# PNP/PCI Configuration Setup



By choosing the PNP/PCI CONFIGURATION SETUP option from the initial SETUP SCREEN menu, the screen below is displayed.



## **PNP OS Installed**

Select Yes if the system operating environment is Plug-and-Play aware (e.g., Windows 95).

## **Resources Controlled By**

The Plug and Play AwardBIOS can automatically configure all the boot and Plug and Play-compatible devices. If you select Auto, all the interrupt request (IRQ) and DMA assignment fields disappear as the BIOS automatically assigns them.

**To enable IDE DMA mode, please choose "Manual" and set IRQ-15 to be Legacy ISA.**

## **Reset Configuration Data**

Normally, you leave this field Disabled. Select Enabled to reset Extended System Configuration Data (ESCD) when you exit Setup if you have installed a new add-on and the system reconfiguration has caused such a serious conflict that the operating system cannot boot.

## **PCI IRQ Activated by**

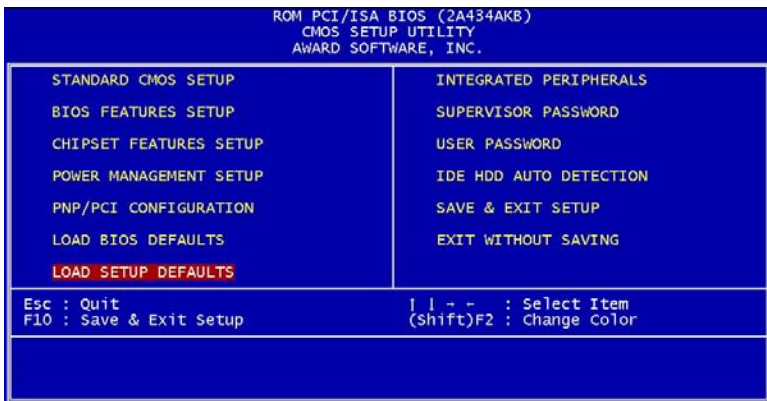
Leave the IRQ trigger set at Level unless the PCI device assigned to the interrupt specifies Edge-triggered interrupts.

## **LAN Card Boot ROM**

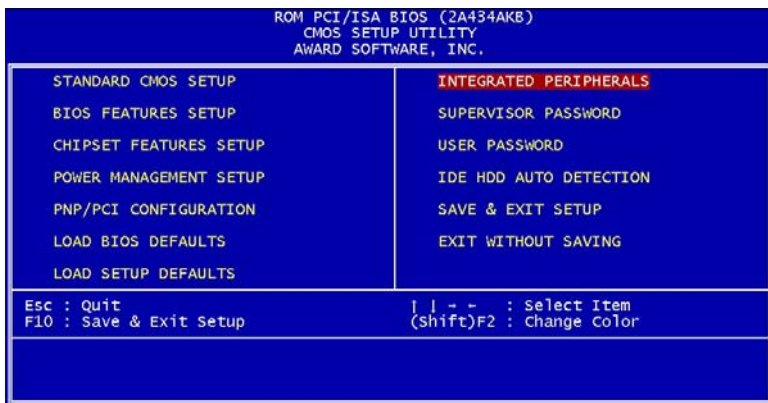
To enable the LAN boot ROM when it is installed.

## Load BIOS Defaults/Load Setup Defaults

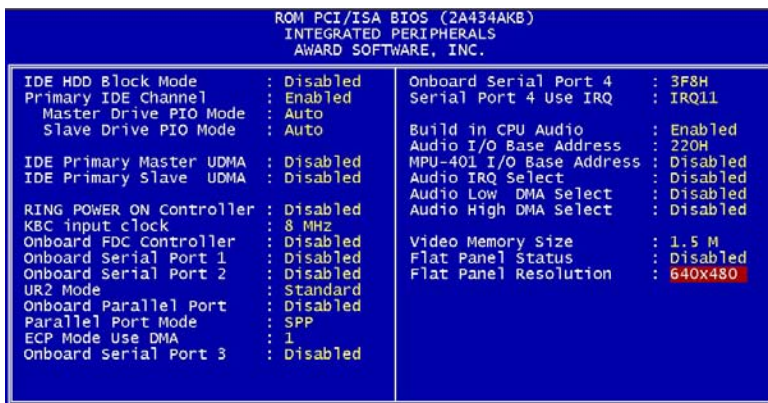
LOAD BIOS DEFAULTS loads the default system values directly from ROM. The BIOS DEFAULTS provides the most stable settings, though they do not provide optimal performance. LOAD SETUP DEFAULTS, on the other hand, provides for maximum system performance. If the stored record created by the setup utility becomes corrupted (and therefore unusable), BIOS defaults will load automatically when you turn the PCM-4896 on.



# Integrated Peripherals Setup



By choosing the INTEGRATED PERIPHERALS option from the initial SETUP SCREEN menu, the screen below is displayed.



### **IDE HDD Block Mode**

Select Enabled only if your hard drives support block mode.

### **Primary IDE Channel**

Select Enable to activate the primary IDE interface.

### **Master Drive PIO Mode/Slave Drive PIO Mode**

To enable the PIO mode from 0~4 for Master and Slave drives.

### **IDE Primary Master/Slave UDMA**

UDMA (Ultra DMA) is a DMA data transfer protocol that utilizes ATA commands and the ATA bus to allow DMA commands to transfer data at a maximum burst rate of 33 MB/s. When you select Auto in the four IDE UDMA fields (for each of up to four IDE devices that the internal PCI IDE interface supports), the system automatically determines the optimal data transfer rate for each IDE device.

### **KBC Input Clock**

The system designer must select the correct frequency for the keyboard controller input clock. Do not change this value from the default value.

### **Onboard FDC Controller**

Select Enabled if your system has a floppy disk controller (FDC) installed on the system board and you wish to use it. If you install an add-in FDC or the system has no floppy drive, select Disabled in this field.

### **Onboard Serial Ports (1, 2)**

Select a logical COM port name and matching address for the first and second serial ports. Select an address and corresponding interrupt for the first and second serial ports.

### **UR2 Mode**

Select an operating mode for the second serial port:

### **Onboard Parallel Port**

Select a logical LPT port address and corresponding interrupt for the physical parallel port

### **Parallel Port Mode**

Select an operating mode for the onboard parallel (printer) port. Select Normal, Compatible, or SPP unless you are certain your hardware and software both support one of the other available modes

### **ECP Mode Use DMA**

Select a DMA channel for the port.

### **Onboard Serial Port 3.**

Select a matching address for the third serial ports.

### **Serial Port 3 Use IRQ.**

Select a corresponding interrupt for the third serial ports.

### **Onboard Serial Port 4.**

Select a matching address for the fourth serial ports.

### **Serial Port 4 Use IRQ.**

Select a corresponding interrupt for the fourth serial ports.

### **Bulid in CPU Audio**

Enable or disable CPU bulit-in audio.

### **Video Memory Size**

Specify the size of system memory to allocate for video memory

### **Flat Panel Status**

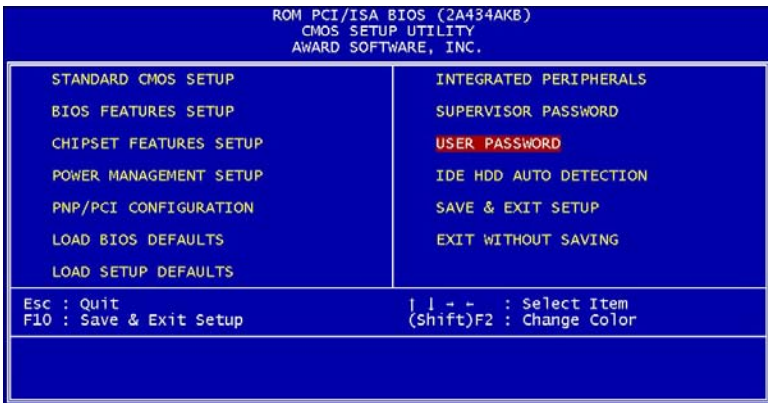
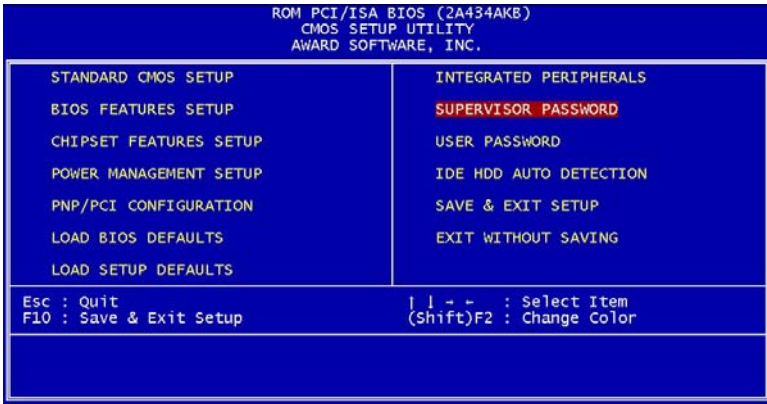
To Enable or disable flat panel support.

### **Flat Panel Resolution**

Adjust the resolution of flat panel.

## Supervisor/User Password Setting

You can set either SUPERVISOR or USER PASSWORD, or both of them. The difference between the two is that the supervisor password allows unrestricted access to enter and change the options of the setup menus, while the user password only allows entry to the program, but not modify options.



When you select this function, a message appears at the center of the screen:

### ENTER PASSWORD:

Type the password, up to eight characters, and press Enter. Typing a password clears any previously entered password from CMOS memory.

Now the message changes:

### CONFIRM PASSWORD:

Again, type the password and press Enter.

To abort the process at any time, press Esc.

In the Security Option item in the BIOS Features Setup screen, select System or Setup:

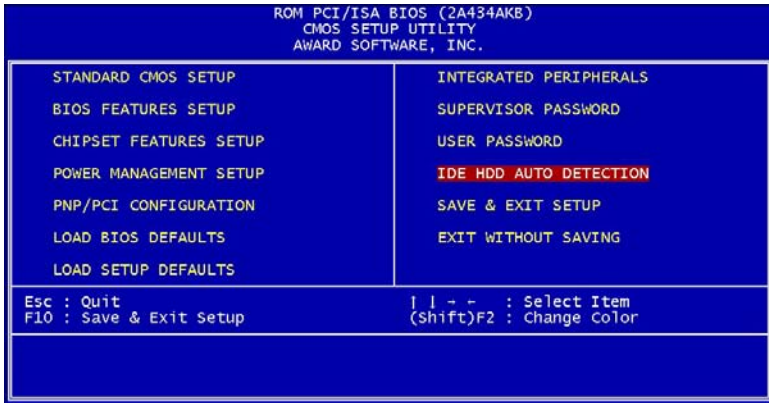
**System** Enter a password each time the system boots and when ever you enter Setup.

**Setup** Enter a password when ever you enter Setup.

***NOTE:** To clear the password, simply press Enter when asked to enter a password. Then the password function is disabled.*

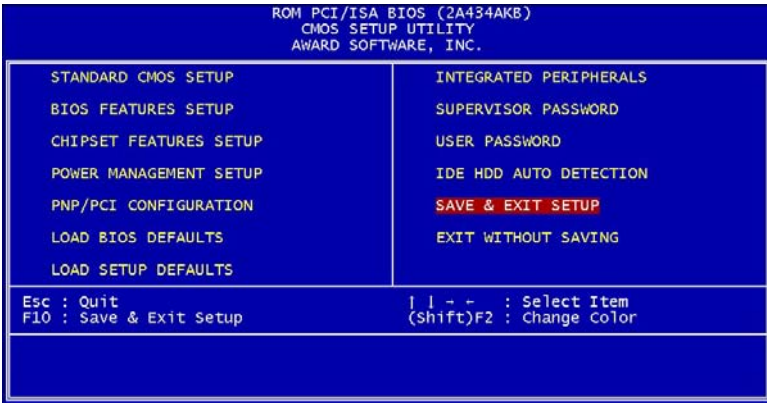
## IDE HDD Auto Detection

The IDE HDD AUTO DETECTION utility can automatically detect the IDE hard disk installed in your system. You can use it to self-detect and/or correct the hard disk type configuration. You need to repeat the setup for each of the IDE combinations:



# Save & Exit Setup

If you select this option and press <ENTER>, the values entered in the setup utility will be recorded in the chipset's CMOS memory. The microprocessor will check this every time you turn your system on and compare this to what it finds as it checks the system. This record is required for the system to operate.



## Exit Without Saving

---

If you select this option and press <ENTER>, the values entered in the setup utility won't be recorded in the chipset's CMOS memory



## **Flat Panel/CRT Controller Display Drivers and Utilities**

This chapter provides information about:

- Driver types and installation

## Software Drivers

---

This chapter describes the operation and installation of the display drivers supplied on the *Supporting CD-ROM* that are shipped with your product.

The onboard VGA adapter is based on the CHIPS VGA Flat Panel/CRT controller and is fully IBM VGA compatible. This controller offers a large set of extended functions and higher resolutions. If you intend to use your VGA adapter in standard VGA modes only, you do not need to install any of these drivers. Since your VGA adapter is fully compatible, it does not require any special drivers to operate in standard modes.

The purpose of the enclosed software drivers is to take advantage of the extended features of the CHIPS VGA Flat Panel/CRT controller.

### Hardware Configuration

Some of the high-resolution drivers provided in this package will work only in certain system configurations. If a driver does not display correctly, try the following:

1. Change the display controller to CRT-only mode, rather than flat panel or simultaneous display mode. Some high-resolution drivers will display correctly only in CRT mode.
2. If a high-resolution mode is not supported on your system, try using a lower-resolution mode. For example, 1024 x 768 mode will not work on some systems, but 800 x 600 mode is supported on most.

## Necessary to Know

The instructions in this manual assume that you understand elementary concepts of MS-DOS and the IBM Personal Computer. Before you attempt to install any driver from the *Supporting CD-ROM*, you should:

- Know how to copy files from a CD-ROM to a directory on the hard disk
- Understand the MS-DOS directory structure

If you are uncertain about any of these concepts, please refer to the DOS or OS/2 user reference guides for more information *before* you proceed with the installation.

## Before You Begin

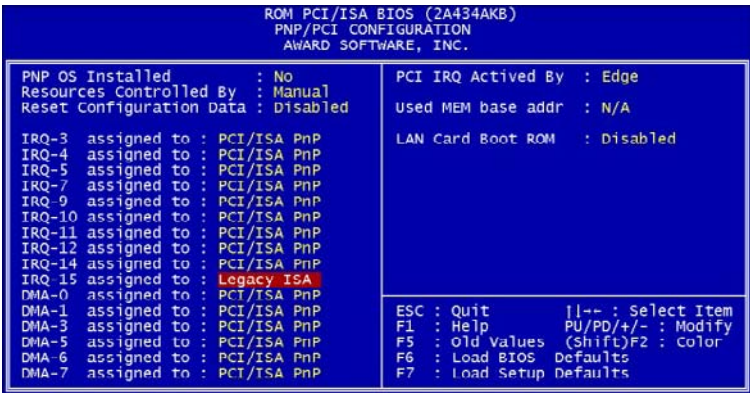
Make sure you know the version of the application for which you are installing drivers. The *Supporting CD-ROM* contain drivers for several versions of certain applications. For your driver to operate properly you must install the driver for your version of the application program.

# Windows® 95/98

These drivers are designed to work with Microsoft® Windows®. You just need to install these drivers through the Windows® operating system.

**Before you start to install the driver, please make sure you have right setting for IRQ-15 in "PnP/PCI Configuration".**

**IRQ-15 assigned to : Legacy ISA**



**Then run "Cyrix MediaGX Certified Win9X Drivers 4.0.exe" before you install VGA driver.**

cd-rom:\Driver\Cyrix MediaGX Certified Win9x Drivers 4.0

"cd-rom" : the drive letter of your CD-ROM drive0.exe

## Driver Installation

1. Run Cyrix MediaGX Certified Win9x Drivers 4.0.exe at  
cd-rom:\Driver\Cyrix MediaGX Certified Win9x Drivers 4.0.exe  
"cd-rom" : the drive letter of your CD-ROM drive

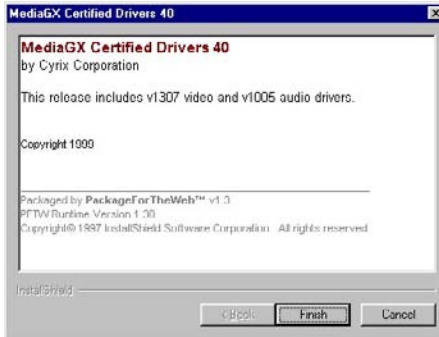


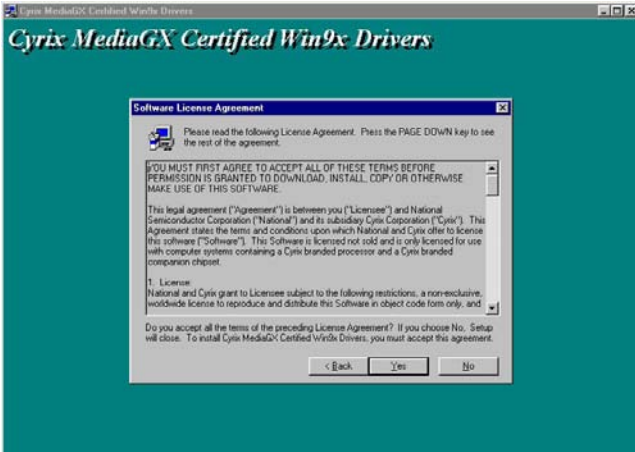
figure 1

Click "Finish" for next step



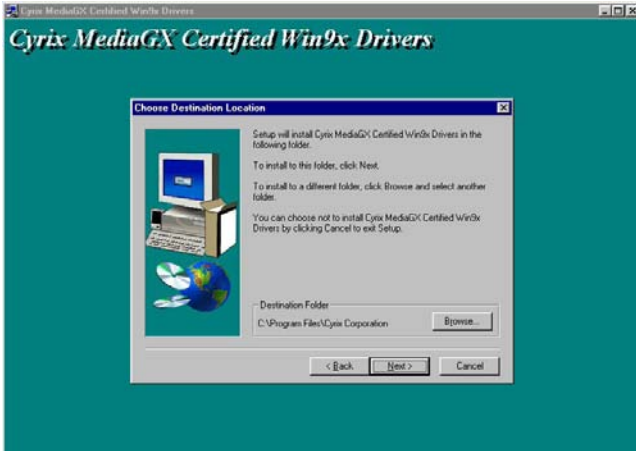
figure 2

Click "Next" for next step



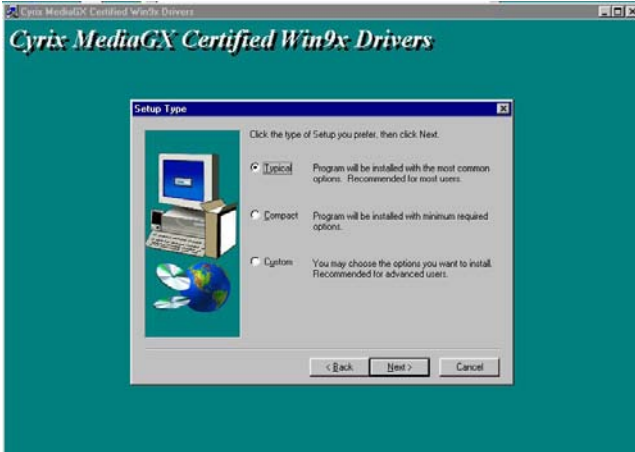
**figure 3**

Read the agreement and click "Yes" for next step, or click "No" to cancel the installation.



**figure 4**

Choose the destination folder and click "Next" for next setp.



**figure 5**

Choose "Typical" to install with most common options.

Choose "Compact" to install with minimum required options.

Choose "Custom" to install the options you want.

Click "Next" for next step.



**figure 6**

Click "Finish" and the system will restart.

# Windows® NT 4.0

---

## Driver installation

1. Install Windows® NT 4.0 as you normally would for **VGA** display. Click the **Star** button, go to **Settings** and click on **Control Panel** icon. Then choose the **Display** and double click on the icon. In the **Display Properties** window, click the **Setting** button, then click the **Display Type** button into the **Display Type** windows, then click on **Change** button from the **Adapter Type** icon. And click on **Have Disk** button in the change display window.
2. Place the *Supporting CD-ROM* into your CD-ROM drive. In the **Select Device** window, click on **Have Disk**, select "**Browse**" and find the NT 4.0 driver from:

cd-rom : \dirver\vga driver\CS5530A\nt40\Oemsetup.inf

"**cd-rom**" : the drive letter of your CD-ROM drive

and then click **OK**. The name of the *Chips and Technologies, Inc. Video Controller* driver will appear highlighted in the Modules list box. Select Chips and Tech. 69000 and Click **OK**. Click **OK** to start the driver installation.

3. Once the installation is complete, the **Change Display Type** window will reappear. Click on close to close the window. Then the **Display Properties** window will reappear. Click on **Apply**. Restart the system for the new settings to take effect.

## **Ethernet Software Configuration**

This chapter describes how to configure the Ethernet Card to match your application requirements.

## Win 9X/NT Ethernet Installation

---

Place the Driver CDROM into your CDROM drive and pull up the CDROM file on you screen

1. Click on **Start** button.
2. Click on **Settings** button.
3. Click on **Control Panel** button.
4. Click on **System** button.
5. Click on **Devis Manager** button.
6. Click on **PCI Ethernet Controller**.
7. Click on **OK**.
8. Click on **Refresh**.
9. Click on **Next**.
10. Select the Optional: **Search for best Lan driver....**
11. Click **Next**.
12. Select CDROM file.
13. Select **Driver/LAN/8139C/Win9X (Windows.NT)**
14. Click on **OK**
15. Click on **Next**.
16. **Rtl 8139.inf** will appear
17. Click on **Next**.
18. Click on **Finish**.

Shut down the computer for restart Window should be visible, follow the command and the chipset driver has been installed.

## Ethernet Software Configuration

---

The onboard Ethernet interface supports all major network operating systems. I/O addresses and interrupts are easily configured via the Award BIOS Setup. To configure the medium type, to view the current configuration, or to run diagnostics, please refer to the following instruction:

1. Power the mainboard on. Ensure that the RSET8139.EXE file is located in the working drive.
2. At the prompt, type RSET8139.EXE and press <ENTER>. The Ethernet configuration program will then be displayed.
3. This simple screen shows all the available options for the Ethernet interface. Just highlight the option you wish to change by using the Up and DOWN keys. To change a selected item, press <ENTER>, and a screen will appear with the available options. Highlight your option and press <ENTER>. Each highlighted option has a helpful message guide displayed at the bottom of the screen for additional information.
4. After you have made your selections and the configuration is what you want, press <ESC>. A prompt will appear asking if you want to save the configuration. Press "Y" if you want to save.

The Ethernet Setup Menu also offers three very useful diagnostic functions. These are:

1. Run EEPROM test
2. Run Diagnostics on Board
3. Run Diagnostics on Network

Each option has its own display screen which shows the format and result of any diagnostic tests undertaken.



## Audio Setup

This PCM-4896L is equipped with an audio interface that records and playback CD-quality audio. This chapter provides instructions for installing the software drivers on the included CDROM.

## Introduction

---

The PCM-4896L on board audio interface provides high-quality stereo sound and FM music synthesis (ESFM). The audio interface can record, compress, and play back voice, sound, and music with built-in mixer control.

The PCM-4896L on board audio interface also supports the Plug and Play (PnP) standard and provides PnP configuration for the audio, FM, and MPU-401 logical devices. It is compatible with Sound Blast® voice and music functions. The ESFM synthesizer is register compatible with the OPL3 and has extended capabilities.

## Setting Up in Windows 95/98

---

The supporting CD-ROM contains the Windows 95/98 drivers for NS5530A. Please see the online help for details.



**Note:** Refer to your Windows 95/98 manual or online help for any questions on Windows 95/98.

## Installing the Drivers Under Window95/98

1. Click "Start" --> "Setting"--> "Control Panel" to open the Control Panel window.

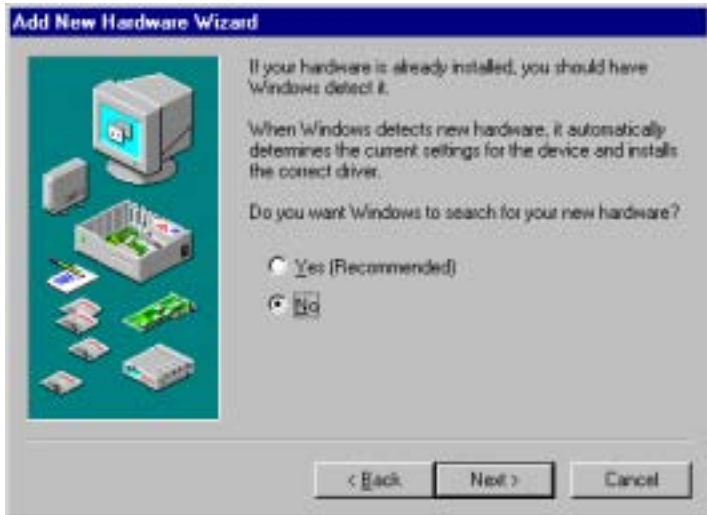
Double click the "Add New Hardware" icon.



2. Click the "Next" button on the "Add New Hardware Wizard" window.



3. Choose "No" for manual installing new hardware. Then click the "Next" button.



4. Find and click to choose the sound icon. Then click the "Next" button.



5. Click the "Have Disk..." button.



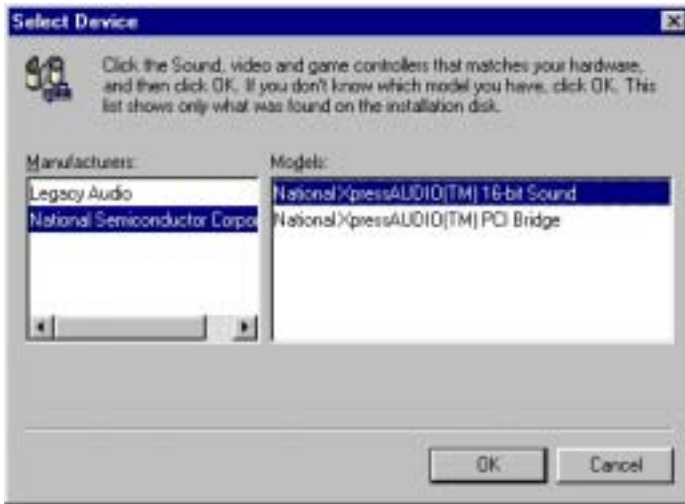
- Specify the drive letter and path for the Supporting CD-ROM as follow then click the "OK" button.

**cd-rom:** \driver\audio\Win9X

**"cd-rom:"**: the drive letter of your CD-ROM drive



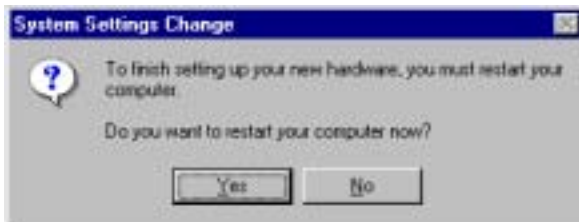
- Click the "OK" button to choose the National Xpress AUDIO(TM) 16-bit Sound drivers.



8. Click the "finish" button and follow instructions to finish the installation.



9. Windows 95/98 will ask you to restart your computer to finish the set up. Click the "Yes" button to reboot your system so the new drivers can be activated.





## **Programming the Watchdog Timer**

The mainboard is equipped with a watchdog timer that resets the CPU or generates an interrupt if processing comes to a standstill for whatever reason. This feature ensures system reliability in industrial stand-alone and unmanned environments.

# Programming the Watchdog Timer

---

## How to Program the WATCHDOG TIMER

1. To set the time-out interval of watchdog timer:
  - output the desired value to port **0x443**. Since the data is of 1 byte, the maximum value will be 255. In our design 2 ~ 255 will denote 2 ~ 255 sec.(About 10% of deviation may happen)
  - outportb(0x443, 30); // set watchdog to 30 seconds***
2. To set the time-out event:
  - output data to **port 0x444**,
  - 0: reset system
  - 1, 2, 3: IRQ 10, 15, 11 respectively
  - 4: NMI
  - e.g.
  - outportb(0x444, 0); // set time-out event to reset-system***
3. To disable watchdog timer:
  - output value 0 to port 0x443
  - outportb(0x443, 0); // disable watchdog timer***
4. To enable or refresh watchdog timer(the watchdog timer will return to its initial value, then count down):
  - access the I/O port **0x443**, e.g.
  - outportb(0x443, data); // refresh watchdog timer***
  - \* note: if you want to refresh the watchdog timer, you have to disable it first.

## Demo Program

```
outportb(0x444, 0);           // set time-out event to reset-system
outportb(0x443x 10);        // set time-out interval to 10 seconds
customer_job();             // execute your job here, be sure your
                               job will finished within 10 seconds
outportb(0x443, 0);        // refresh watchdog timer, otherwise
                               the system will reset after time-out
outportb(0x443, 20);       // set time-out interval to 20 seconds
another_job();             // another job finished in 20 seconds
outportb(0x443, 0)         // disable watchdog timer
...
...
```



APPENDIX

# B

## **Installing PC/104 Modules**

This appendix provides instructions for installing PC/104 modules.

## Installing PC/104 modules

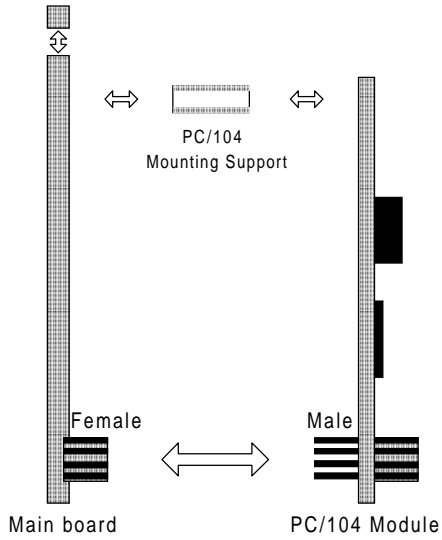
---

The PCM-4896L's PC/104 connectors give you the flexibility to attach PC/104 expansion modules. These modules perform the functions of traditional plug-in expansion cards, but save space and valuable slots. Modules include:

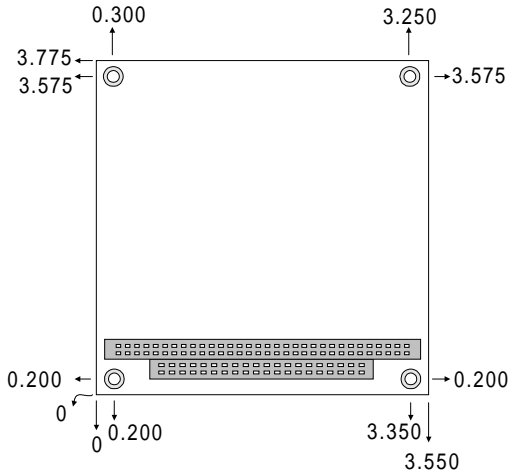
- **PCM-3115B**      PCMCIA Module (two-slot)
- **PCM-3420**      PC/104 Fast SCSI Module
- **PCM-3600**      PC/104 Fax/Modem Module
- **PCM-3610**      Isolated RS-232 and RS-422/485 Module
- **PCM-3660**      Ethernet Module
- **PCM-3718**      30 KHz A/D Module
- **PCM-3724**      48-channel DIO Module
- **PCM-3910**      Breadboard Module
- **PCM-3810**      Solid State Disk Module

Installing these modules on the PCM-4896 is a quick and simple operation. The following steps show how to mount the PC/104 modules:

- Step1      Remove the PCM-4896 from your system, paying particular attention to the safety instructions already mentioned above.
- Step2      Make any jumper or link changes required to the SBC now. Once the PC/104 module is mounted, you may have difficulty in accessing these.
- Step3      Mount the PC/104 module onto the SBC. Do this by pressing the module firmly but carefully onto the mounting connectors.
- Step4      Secure the PC/104 module onto the SBC using the four mounting spacers and screws.



**PC/104 Module Mounting Diagram**



**PC/104 module dimensions (inches ±5%)**



APPENDIX

C

**Optional Extras**

## PCM-10489-5 Wiring Kit

The cable kit PCM-10489-5 includes the following cables:

Part No.	Cable description	Termination connector
1701440350	2.5" and 1.8" IDE	44-pin, 2 mm, female IDC (350 mm)
1701440501	3.5" IDE (40P)	40-pin, 2.54 mm, female IDC (500 mm)
1701340601	3.5" floppy,(34P)	34-pin dual floppy
1701260301	Parallel port	25-pin female DSUB
1701080160	Network 10/100BASE-T	RJ-45 extend cable
1701150150	VGA CRT	15-pin DSUB
1700080204	Keyboard and PS/2 mouse	6 pin MINI DIN
1703040301	Peripheral power (-5V and -12V)	4 conductor
1701080301	Front panel	8 pin open-end
1701400180	RS-232 Serial Port, 4 COM Port	Speaker, Line Out, Line In, Mic In, TV Output, S Terminal
1700140163	Audio Input/Output	Speaker, Line Out, Line In, Mic In

## Optional USB Cable

---

Part No.	Description	Suitable Model
1709100200	USB Cable 5pin*2 20cm Normal W/Bracket	PCM-4896 Rev.A1.1 PCM-5894 Rev.A3.1/A3.2/B1 PCM-5896 Rev.A1.1 PCM-6890 Rev.A1.1 PCM-7890 Rev.A2.1
1709080200	USB Cable 4pin*2 20cm Special W/Bracket	PCM-4896 Rev.B1 PCM-5896 Rev.B1.1
1709080201	USB Cable 4pin*2 20cm Reversed W/Bracket	PCM-4896 Rev.B1.1 PCM-4896(L) Rev.C1.0 PCM-5896 Rev.B1.2 PCM-6890 Rev.A1.2 PCM-7890 Rev.A2.2

