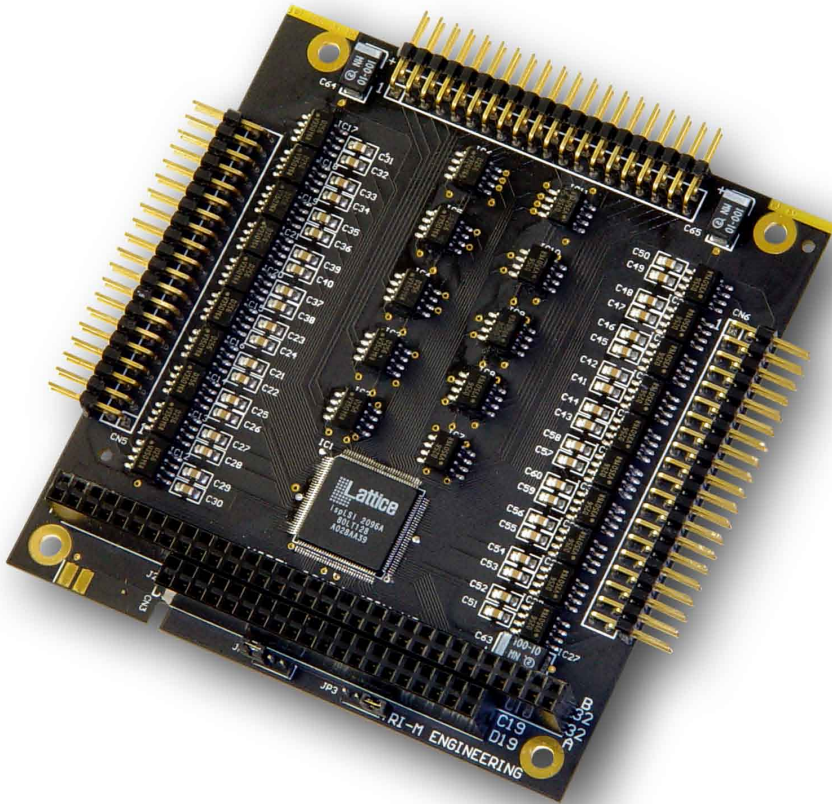


IO104-60IN

PC/104 Optoisolated 60 Inputs



features

- 60 optoisolated inputs
- Inputs on standard 0.1" pitch 40 pin headers
- I/O access through I/O mapped
- All inputs are optoisolated
- Input Range: 3V to 24V AC or DC input
- Multiple IO104-60IN boards can be stacked
- PC/104 compliant, 3.75" x 3.55"
- Weight: 2.27 oz / 64 grams

Ordering Information



this product is
manufactured by:



Part Number

IO104-60IN

Description

Optoisolated 60 inputs

Options

IR104

20 inputs and 20 relay outputs

R104-88

8 optoisolated inputs and 8 relay outputs

R104-DI

16 optoisolated inputs

R104-DO

16 relay outputs