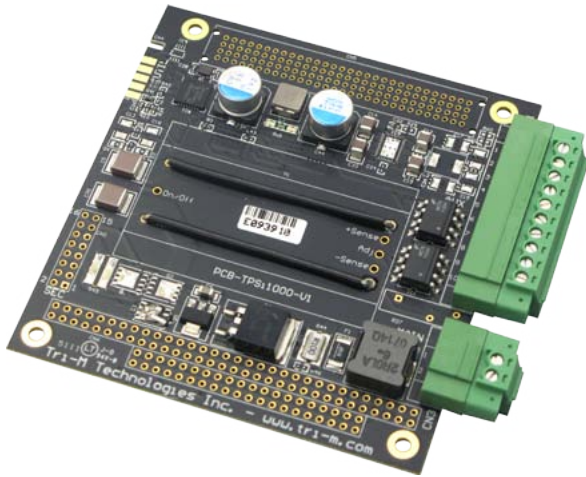


TPS1035 *PC/104-Plus Power Solution*

10W DC-DC Power Converter

Overview

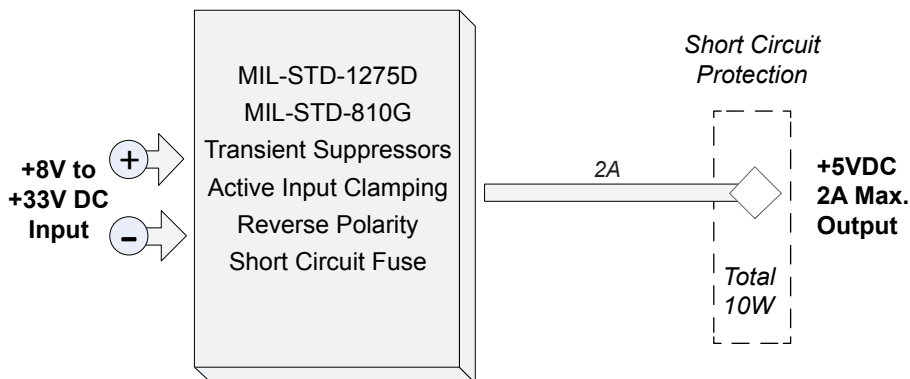
Tri-M's TPS1035 is an efficient PC/104 form factor power solution tested to MIL-STD-801G, designed for embedded applications requiring clean power in rugged environments.



With wide-range input voltages, transient suppression, and quick-disconnect terminal mating plugs, this rugged design is ideal for any industrial application.

Designed for harsh environments, including military standards, shock, vibration and extended temperature, the TPS1035 is well suited for transportation, defence, and aerospace industries. For reliable protection and high performance, the TPS1035 is the perfect solution for efficient DC power.

Block Diagram



Key Specifications

- **Enhanced Protection**
100V 50ms Transient Suppression
Active Input Voltage Clamping
Reverse Polarity, Short Circuit
- **Wide Input Voltages**
Ranges from +8V to +33V DC
- **Standard Outputs**
+5V@2A 10W Total
- **High Performance**
Typical Efficiency 84%* at 24VDC
- **Extended Temperature**
-40°C to +85°C / -40°F to +185°F

Advantages

- **Rugged Design**
Designed to Meet MIL Standards
- **High Efficiency**
Reduced Heat Generation
- **Simple Installation**
Terminal Socket Mating Plugs
- **Space-Efficient Solution**
High Density PC/104-Plus Module

Our Capabilities

- **Application Engineering**
- **Rapid Development**
- **Engineered Systems**
- **Custom Software**
- **Industry Standards & Certification**
- **Exceptional Customer Experience**

Specifications

Electrical

Input Voltage Range	+8V to +33V DC
+5V Output	2A Max.
Maximum Power	10W Total*
Efficiency	Typical 84% at 24VDC*
Output Ripple/Noise	<20mV
Line Regulation	30mV Max.
Load Regulation	100mV Max.
Switching Frequency	192kHz
Quiescent Current	16mA (LEDs & Outputs Off)

Mechanical

Dimensions	PC/104 compliant 90 × 96 × 15mm (3.55 × 3.775 × 0.6")
Weight	150g (5.3oz) with plugs

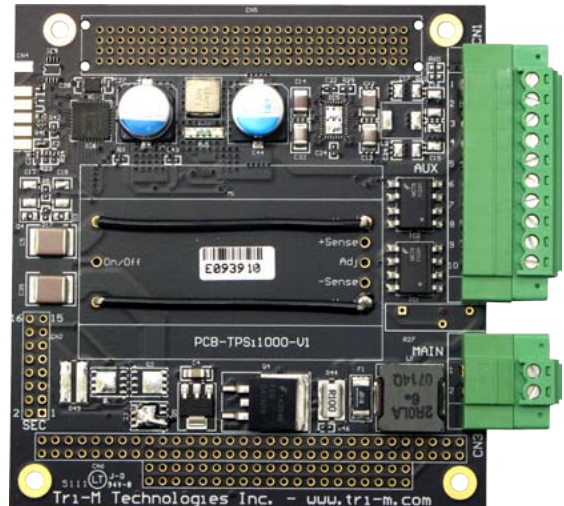
Environmental

Operating Temperature*	-40°C to +85°C (-40°F to +185°F)
------------------------	-------------------------------------

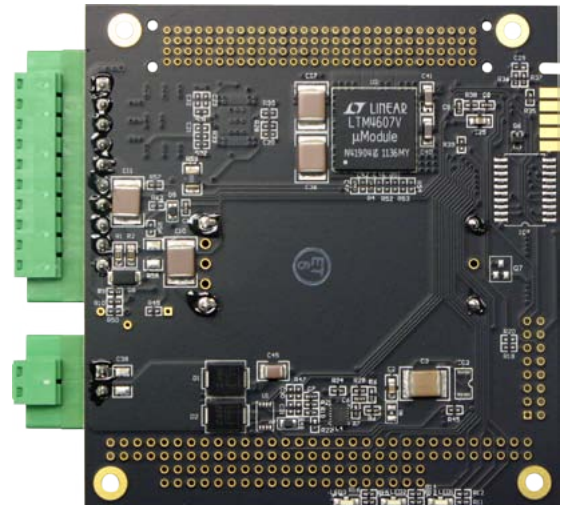
Certifications



* The power supply has been characterized to 10 watts performance over the temperature range.



Top View



Bottom View

Ordering Information

Models

TPS1035-V2	+5V, 10W
------------	----------

Options

- Conformal Coating
- Stackthrough and Non-Stackthrough
- ESS Testing Available