



**SSF0635-E / SSH0635-E**

**6.2”Resizing LCD,1000 nits LED backlight, 1024x250 ultra wide aspect ratio 16:4**

SSF/SSH 0635-E is an innovative ultra-wide, sunlight readable, LED backlight LCD display. it provides LCD panel with specific ratios for digital signage, public transportation, exhibition hall, department store, vending machine, POS and industrial applications. It is high-quality full color video with energy-efficient.

**Key Features**

- Resizing LCD
- Ultra Wide Screen (16 : 4)
- LED Backlight
- Brightness 1000 nits
- Low Power Consumption
- High Uniformity
- Slim Bezel



**Specifications**

Preliminary

Model No.	SSF0635	SSH0635
<b>Description</b>	6.2” Resizing LCD, 1000 nits LED backlight, 1024x250	
<b>Display Area</b>	153.6 x 37.5 mm	
<b>Brightness</b>	1000 cd/m <sup>2</sup>	
<b>Resolution</b>	1024 x 250	
<b>Aspect Ratio</b>	16 : 4	
<b>Contrast Ratio</b>	700:1	
<b>Pixel Pitch (mm)</b>	0.15 x 0.15	
<b>Viewing Angle</b>	150°(H), 145°(V)	
<b>Display Colors</b>	262K / 16.7M	
<b>Response Time (Typical)</b>	25ms	
<b>Sync</b>	LVDS	
<b>Power Consumption</b>	3.91W / 8.91W	
<b>Dimensions (mm)</b>	165.75 x 55 x 5.3	
<b>Weight (Net)</b>	0.09Kg	
<b>LED Driving Board</b>	On Board	
<b>Control Board (Optional)</b>	<input type="checkbox"/> AD2662GDHM	
<input type="checkbox"/> AD2662GDHM	VGA+DVI+HDMI	
<b>F / R Control Button</b>	<input type="checkbox"/> 5 Key <input type="checkbox"/> 4 Key	
<input type="checkbox"/> 4 Key	Power Switch, Menu, Select (+,-),	
<b>OSD Menu</b>	Brightness, Contrast, H/V Position, Color, Phase, Clock...	
<b>Optional</b>	<input type="checkbox"/> AOT <input type="checkbox"/> Touch Screen	

Specifications are subject to change without notice.

All brands or product names are trademarks or registered trademarks of their respective companies.

**SSF**= Panel+ LED Driving Board

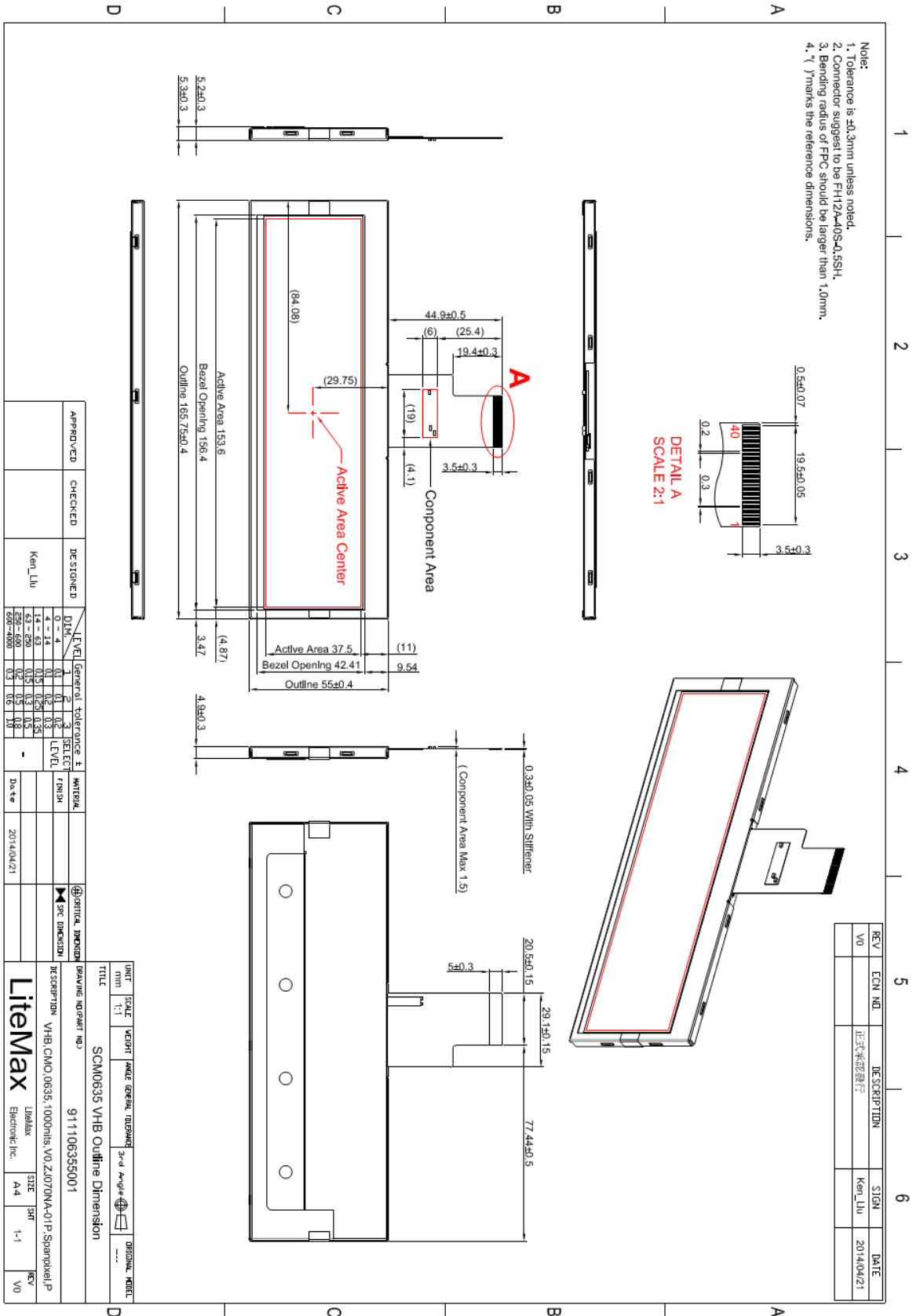
**SSH**= Panel+ LED Driving Board + Control Board



## Mechanical Drawing

### Outline Dimensions

Unit: mm





### Ordering Information

Model Name	Description
SSF0635-ENN-A01	6.22",1000nits,1024*250,V1
SSH0635-ENN-G01	6.22",1000nits,1024*250,AD2662GM,DC 12V input,V1

### Optional Accessories

Part Number	Description
810618301010	CABLE.POWER.AC.1830mm USA type
810618301090	CABLE,POWER,AC,1830mm Europe type
810618301050	CABLE.POWER.AC.1830mm UK type
810618301170	CABLE.POWER,AC,1830mm Australia type
810618301030	CABLE.POWER.AC.1830mm Japan type